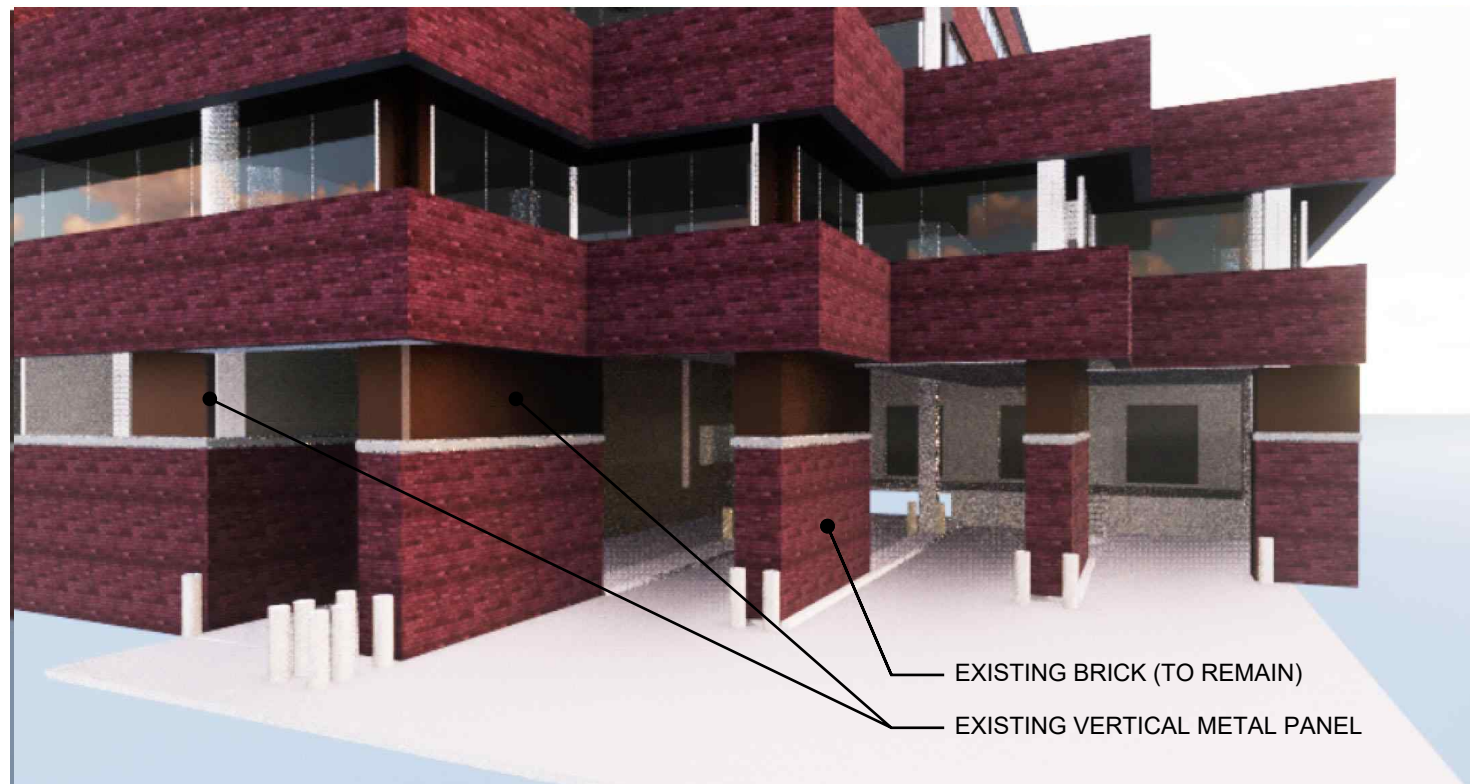
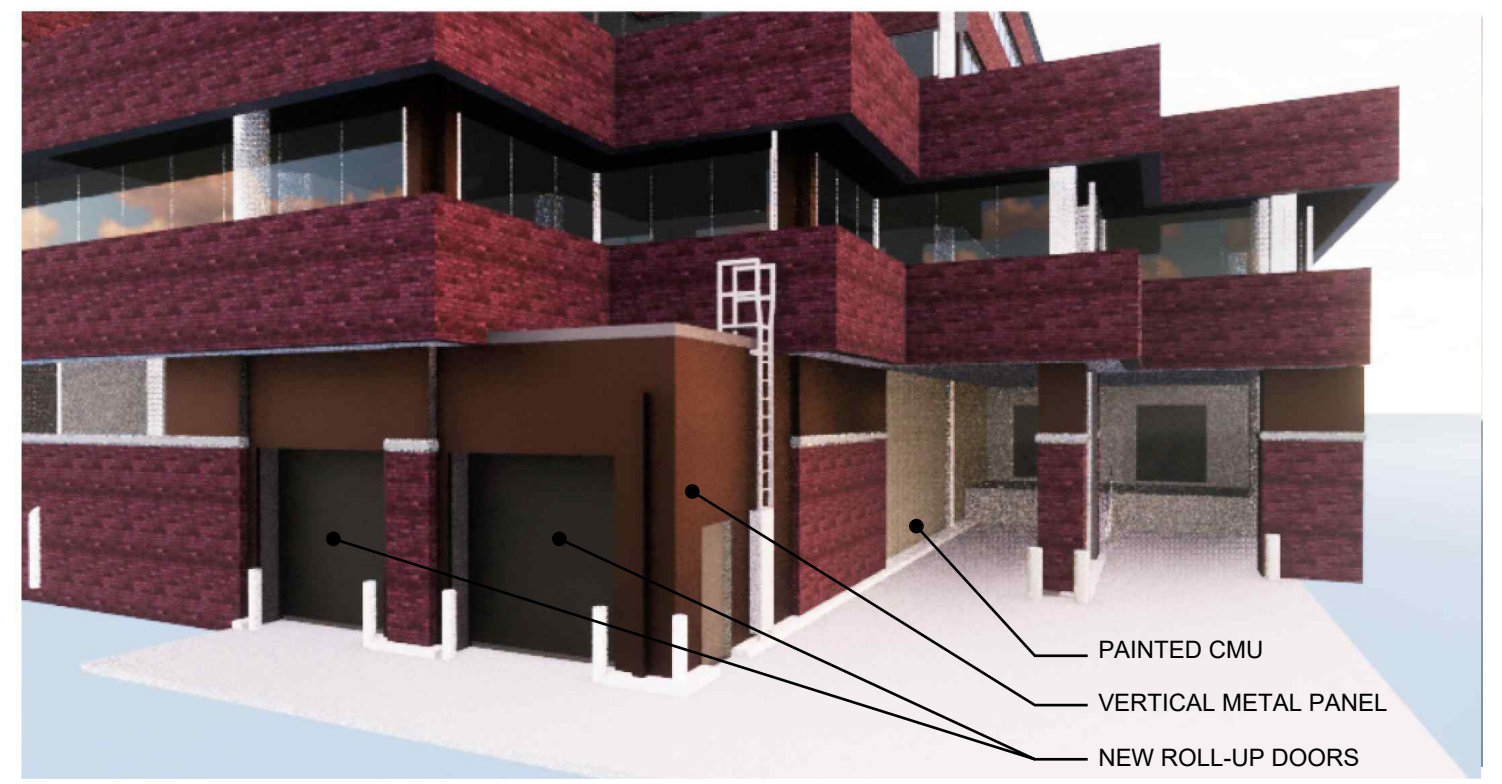




NOT TO SCALE

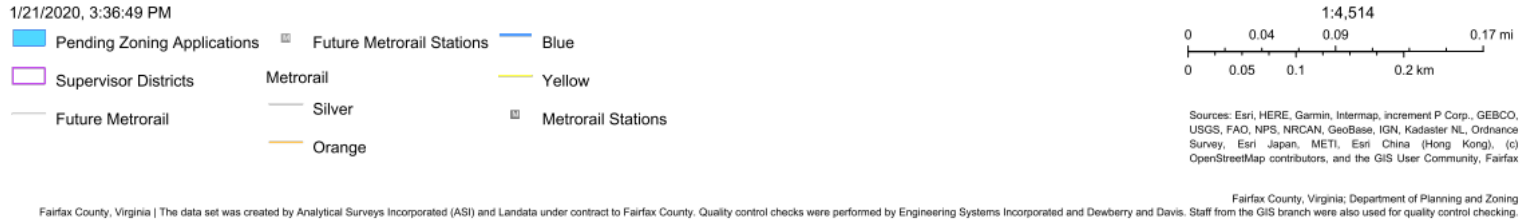
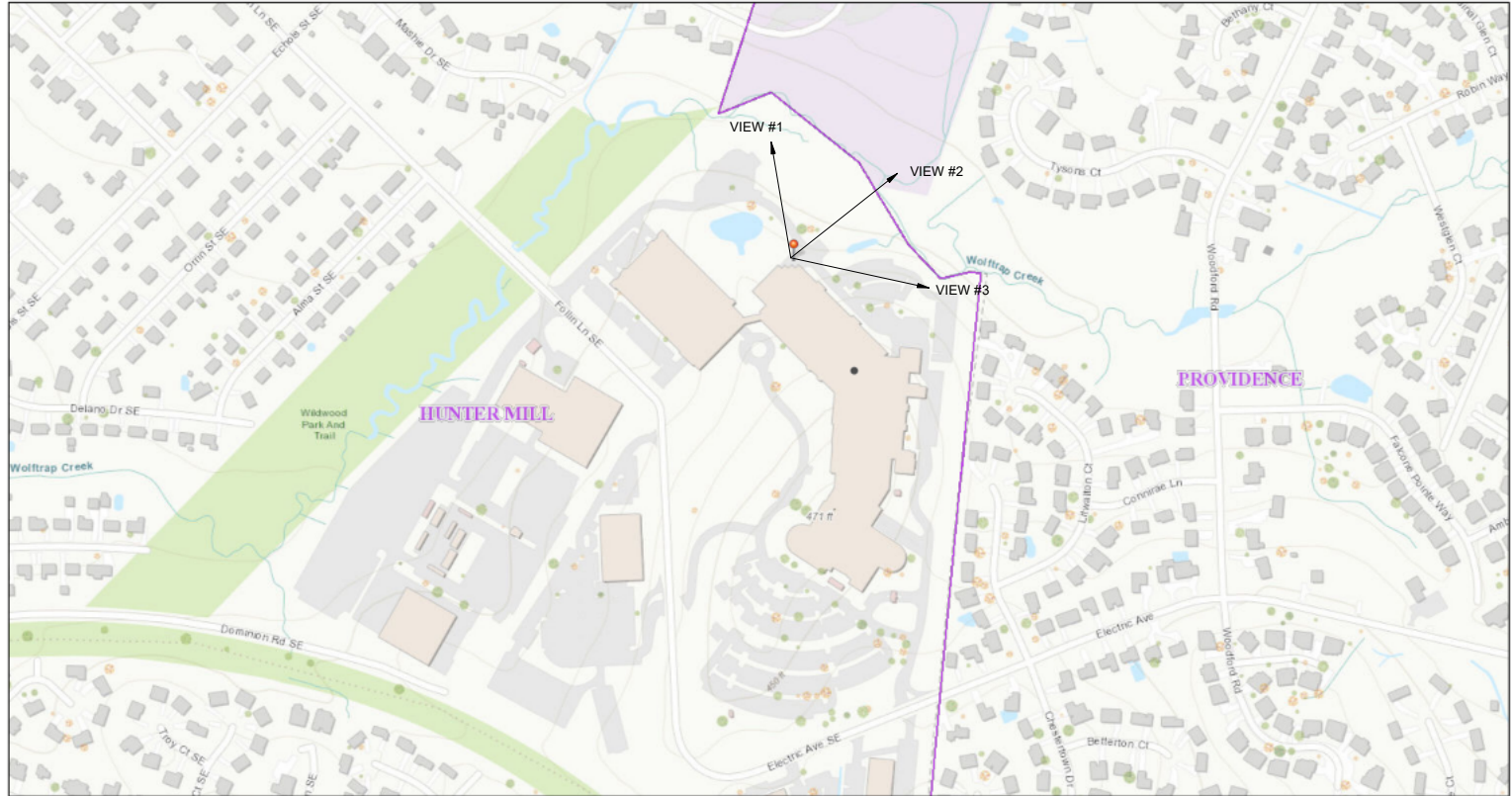


VIEW #1 - EXISTING LOADING DOCK



VIEW #2 - PROPOSED LOADING DOCK

FAIRFAX COUNTY
Planning & Zoning Viewer



VIEW #1 - FROM LOADING LOOKING NORTH

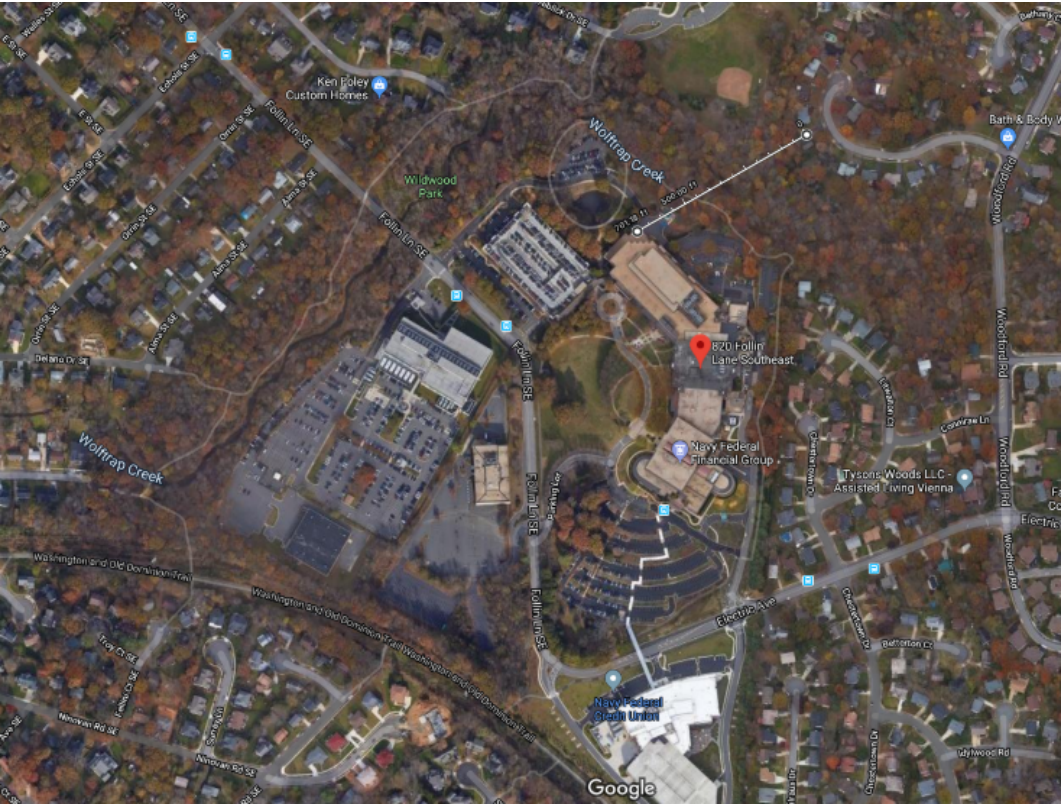


VIEW #2 - FROM LOADING LOOKING NORTH EAST



VIEW #3 - FROM LOADING LOOKING EAST

GOOGLE - SATELLITE IMAGE



CLOSEST PROPERTY IS 700'-0" FROM AREA OF WORK

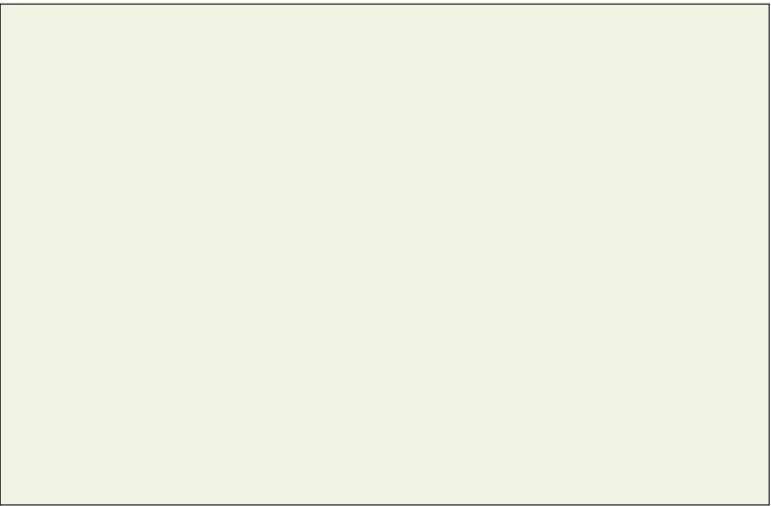
PROPERTY IS LOCATED ON 10.97 ACRES WITHIN A WOODED CAMPUS LIKE SETTING - ZONED AS A CMP.
ADJACENT PROPERTIES INCLUDE A BASEBALL FIELD FOR OUR LADY OF GOOD COUNSEL CATHOLIC SCHOOL AND SURROUNDING RESIDENTIAL NEIGHBORHOODS.



CENTRIA IW SERIES METAL PANELS
IW-12A - VERTICAL JOINTS
COLOR: DARK BRONZE (TO MATCH EXISTING)



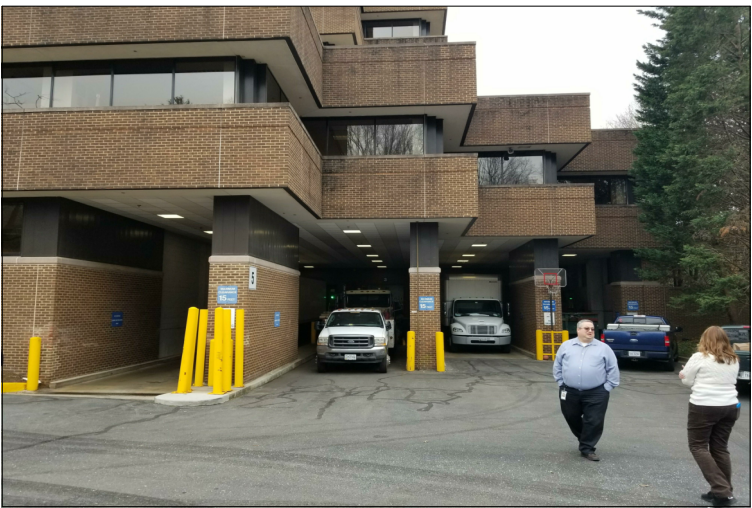
OVERHEAD DOOR CORPORATION
MODEL 625 - STORMTITE
COLOR: BROWN



PAINTED CONCRETE MASONRY UNITS
BENJAMIN MOORE: 967 CLOUD WHITE



EXISTING VERTICAL METAL PANEL



EXISTING LOADING DOCK



EXISTING INTERIOR OF LOADING DOCK