

5/7/2020 10:40:35 AM

E
D
C
B
A

1

2

3

4

5

GENERAL NOTES:

- 1 ALL TYPE 'S3', 'S3C', AND 'S5' LIGHT FIXTURES WILL BE MOUNTED ON AN ELEVATION LIGHT POLE WITH A MAX 20 BASE. SEE DETAIL 1 ON SHEET E-501 FOR FURTHER INFORMATION.

KEYED NOTES:

- 1 PROVIDE CIRCUITING TO PARKING AREA LIGHTING, IN DIRECT BURIED CONDUIT ROUTE CONDUIT ABOVE UTILITY DUCTBANKS AT MINIMUM 24" BELOW GRADE.
- 2 PROVIDE CIRCUITING TO PUBLIC AREA SITE LIGHTING, IN DIRECT BURIED CONDUIT ROUTE CONDUIT MINIMUM 24" BELOW GRADE. SEE SHEET E-101 FOR CONTINUATION.
- 3 SEE CONTINUATION OF LIGHTING CIRCUIT NP1-1 ON ELECTRICAL SITE LIGHTING PLAN E-101.
- 4 PROVIDE (3) 2" CONDUIT FROM MAIN ELECTRICAL ROOM TO HANDHOLE LOCATED ON SITE FOR FUTURE CONNECTION TO PHOTOVOLTAIC ARRAY.
- 5 PROVIDE (4) DRIVERS FOR EXTERIOR STRIP LIGHTING FIXTURES TYPE 'T'. ROUTE DRIVER SECONDARY CONDUCTORS (#10 AWG MINIMUM), IN 3/4" DIRECT-BURIED PVC CONDUIT TO FIXTURE LOCATIONS. REFER TO E-101 FOR CONTINUATION.
- 6 PROVIDE (3) DRIVERS FOR EXTERIOR STRIP LIGHTING FIXTURES TYPE 'U'. ROUTE DRIVER SECONDARY CONDUCTORS (#10 AWG MINIMUM), IN 3/4" DIRECT-BURIED PVC CONDUIT TO FIXTURE LOCATIONS. REFER TO E-101 FOR CONTINUATION.
- 7 SEE SITE LIGHTING PLAN E-101 FOR CONTINUATION OF BELOW GRADE CONDUIT SERVING EXTERIOR STRIP LIGHTING FIXTURES TYPE 'U'.

MATCHLINE
SEE E-101

MATCHLINE
SEE E-101

1 ELECTRICAL SITE LIGHTING PLAN

Scale: 1" = 10'-0"



8401 Arlington Blvd.
Fairfax, VA 22031
703.694.9025

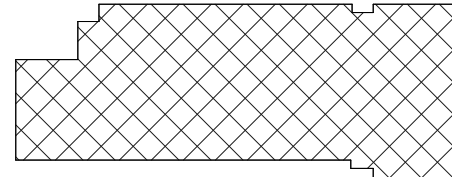
Town of Vienna

Town of Vienna Police Station

215 Center Street South
Vienna, VA 22180
PERMIT SUBMISSION

SEAL

KEY PLAN



SCALE

REVISIONS

NO.	DESCRIPTION	DATE
1	PERMIT SUBMISSION	02/26/20

DRAWN BY _____ RP
APPROVED BY _____ DW
CHECKED BY _____ RR
DATE _____ FEBRUARY 26, 2020

TITLE

ELECTRICAL SITE
LIGHTING PLAN

PROJECT NO. 50108541

E-100

SHEET NO.

5/7/2020 10:40:39 AM

E
D
C
B
A

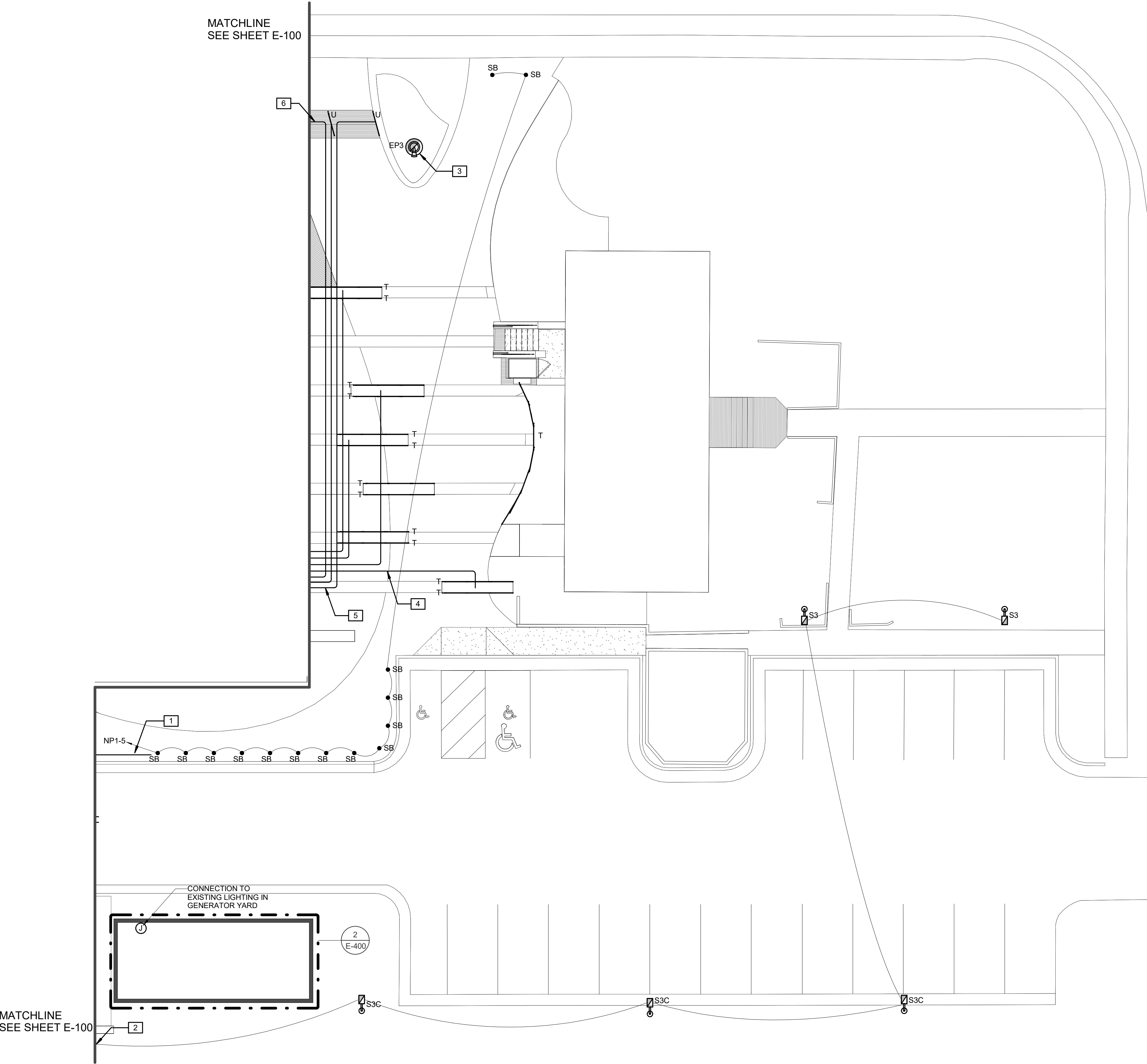
1

2

3

4

5



GENERAL NOTES:

- 1 ALL TYPE 'S3', 'S3C', AND 'SS' LIGHT FIXTURES WILL BE MOUNTED ON AN ELEVATION LIGHT POLE WITH A MAX 20 BASE. SEE DETAIL 1 ON SHEET E-501 FOR FURTHER INFORMATION.

KEYED NOTES:

- 1 PROVIDE CIRCUITING TO PUBLIC AREA SITE LIGHTING. IN DIRECT BURIED CONDUIT ROUTE CONDUIT MINIMUM 24" BELOW GRADE. SEE SHEET E-100 FOR CONTINUATION.
- 2 SEE CONTINUATION OF LIGHTING CIRCUIT NP1-1 ON ELECTRICAL SITE LIGHTING PLAN E-100.
- 3 ROUTE BRANCH CIRCUIT TO FLAGPOLE FIXTURE BELOW GRADE TO FLAGPOLE LOCATION. PROVIDE RIGID CONDUIT BELOW GRADE BACK TO THE LOCATION OF OTHER EXTERIOR LIGHTING DRIVERS. FIXTURE SHALL BE ILLUMINATED AUTOMATICALLY FROM DUSK TO DAWN WITH MANUAL OVERRIDE AT THE MAIN ELECTRICAL ROOM.
- 4 PROVIDE (4) DRIVERS FOR EXTERIOR STRIP LIGHTING FIXTURES TYPE 'T'. ROUTE DRIVER SECONDARY CONDUCTORS (#10 AWG MINIMUM), IN 3/4" DIRECT-BURIED PVC CONDUIT TO FIXTURE LOCATIONS. REFER TO E-100 FOR CONTINUATION.
- 5 PROVIDE (3) DRIVERS FOR EXTERIOR STRIP LIGHTING FIXTURES TYPE 'U'. ROUTE DRIVER SECONDARY CONDUCTORS (#10 AWG MINIMUM), IN 3/4" DIRECT-BURIED PVC CONDUIT TO FIXTURE LOCATIONS. REFER TO E-100 FOR CONTINUATION.
- 6 SEE SITE LIGHTING PLAN E-100 FOR CONTINUATION OF BELOW GRADE CONDUIT SERVING EXTERIOR STRIP LIGHTING FIXTURES TYPE 'U'.



8401 Arlington Blvd.
Fairfax, VA 22031
703.694.9025

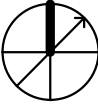
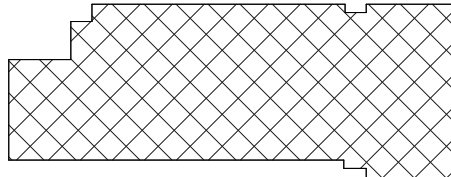
Town of Vienna

Town of Vienna Police Station

215 Center Street South
Vienna, VA 22180
PERMIT SUBMISSION

SEAL

KEY PLAN



SCALE

REVISIONS

NO.	DESCRIPTION	DATE
1	PERMIT SUBMISSION	02/26/20

DRAWN BY _____ Author
APPROVED BY _____ Approver
CHECKED BY _____ Checker
DATE _____ FEBRUARY 26, 2020

TITLE

ELECTRICAL SITE
LIGHTING PLAN

PROJECT NO. 50108541

E-101

SHEET NO.

1 ELECTRICAL SITE LIGHTING PLAN 2
Scale: 1" = 10'-0"



8401 Arlington Blvd.
Fairfax, VA 22031
703.694.9025

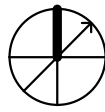
Town of Vienna

Town of Vienna Police Station

215 Center Street South
Vienna, VA 22180
PERMIT SUBMISSION

SEAL

KEY PLAN



REVISIONS

1	PERMIT SUBMISSION	02/26/20
NO.	DESCRIPTION	DATE

DRAWN BY RF

APPROVED BY _____ DW

CHECKED BY _____ RF _____

DATE FEBRUARY 26, 2020

TITLE

SCHEDULES AND DIAGRAMS

PROJECT NO.	50108541
-------------	----------

E-600

SHEET NO.

GENERAL NOTES:

1. CONTRACTOR SHALL COORDINATE FIXTURE MOUNTING STYLE (GRILL VERSUS GYP BOARD) WITH ARCHITECTURAL REFLECTED CEILING PLANS AND PROVIDE REQUIRED MOUNTING ACCESSORIES.
2. CONTRACTOR SHALL COORDINATE MOUNTING HEIGHT FOR WALL-MOUNTED FIXTURES WITH ARCHITECTURAL ELEVATIONS PRIOR TO ANY ROUGH-IN.
3. ALL RECESSED DOWNLIGHTS WHEN INSTALLED IN ACOUSTICAL CEILING TILE SHALL BE PROVIDED WITH 24" GRID BAR HANGERS.
4. ALL INDUSTRIAL FIXTURES WHEN INSTALLED IN MECHANICAL SPACES SHALL BE COORDINATED WITH ALL TRADES TO AVOID CONFLICTS WITH MECHANICAL, PLUMBING AND FIRE PROTECTION EQUIPMENT, PIPING, DUCTWORK, ETC.