

NEW WINDOWS

BRICK
RUSTICATION

NEW WINDOWS

ARCHED PARAPET

STORE FRONT
DESIGN

BRICK
RUSTICATION

LOT 12
ELEV. 1
SCHEME #2

LOT 1
ELEV. 8
SCHEME #3

LOT 2
ELEV. 9
SCHEME #6

LOT 3
ELEV. 10
SCHEME #2B

LOT 4
ELEV. 10
SCHEME #2B

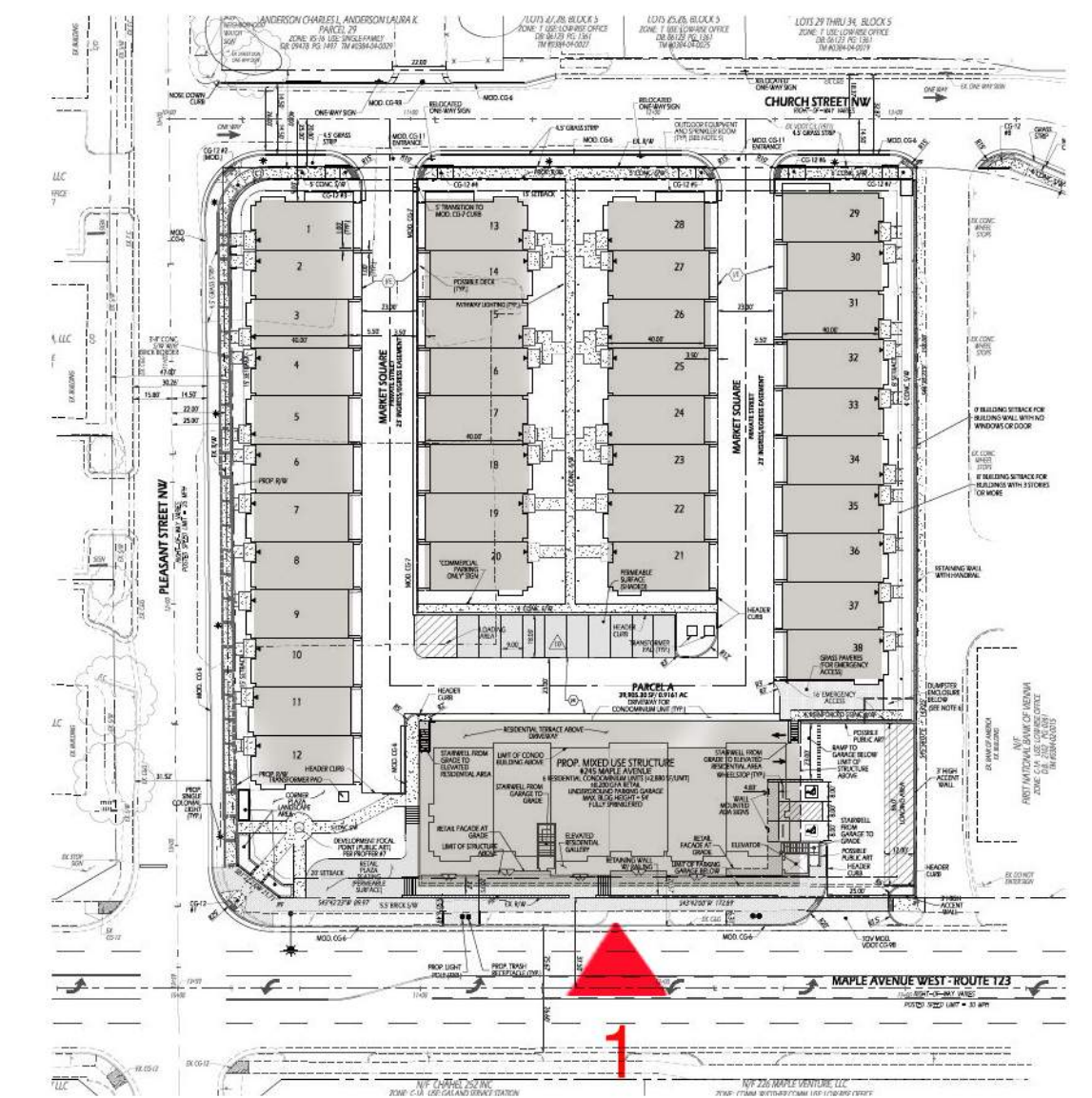
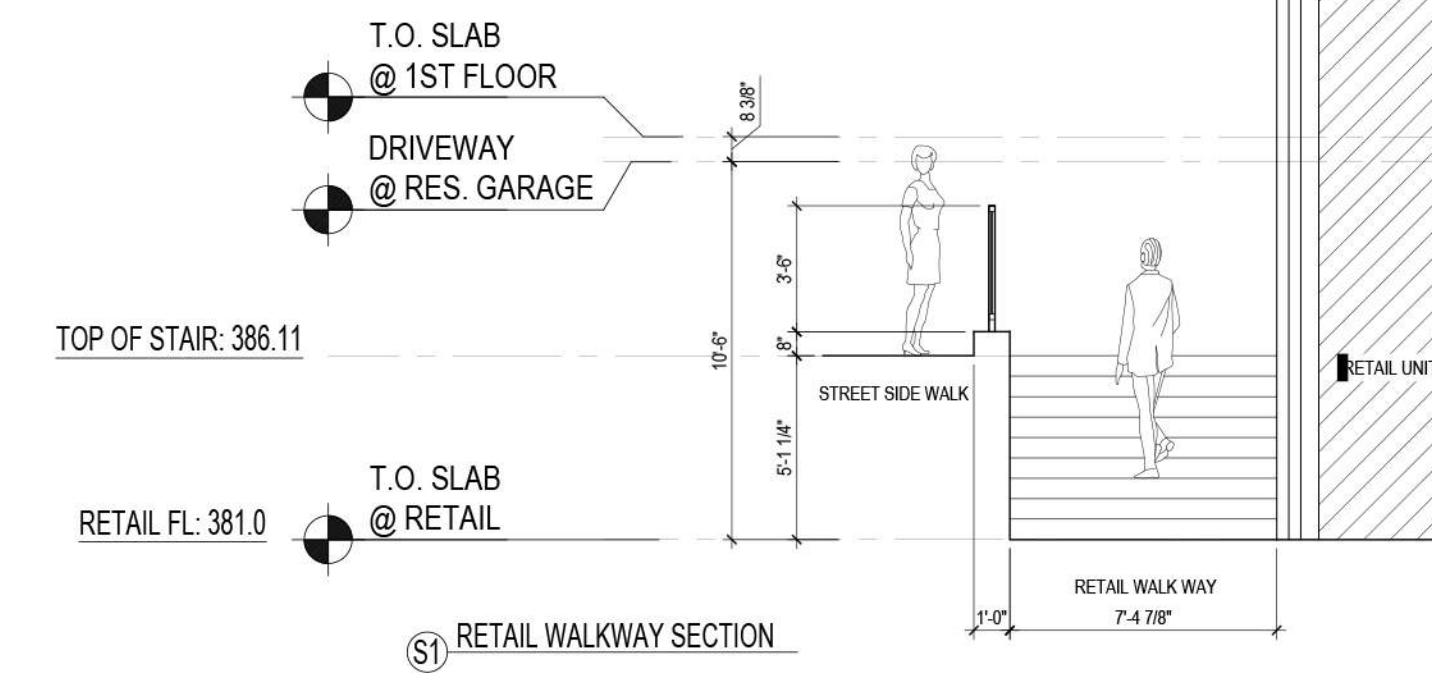
LOT 5
ELEV. 9
SCHEME #5

LOT 6
ELEV. 8
SCHEME #3

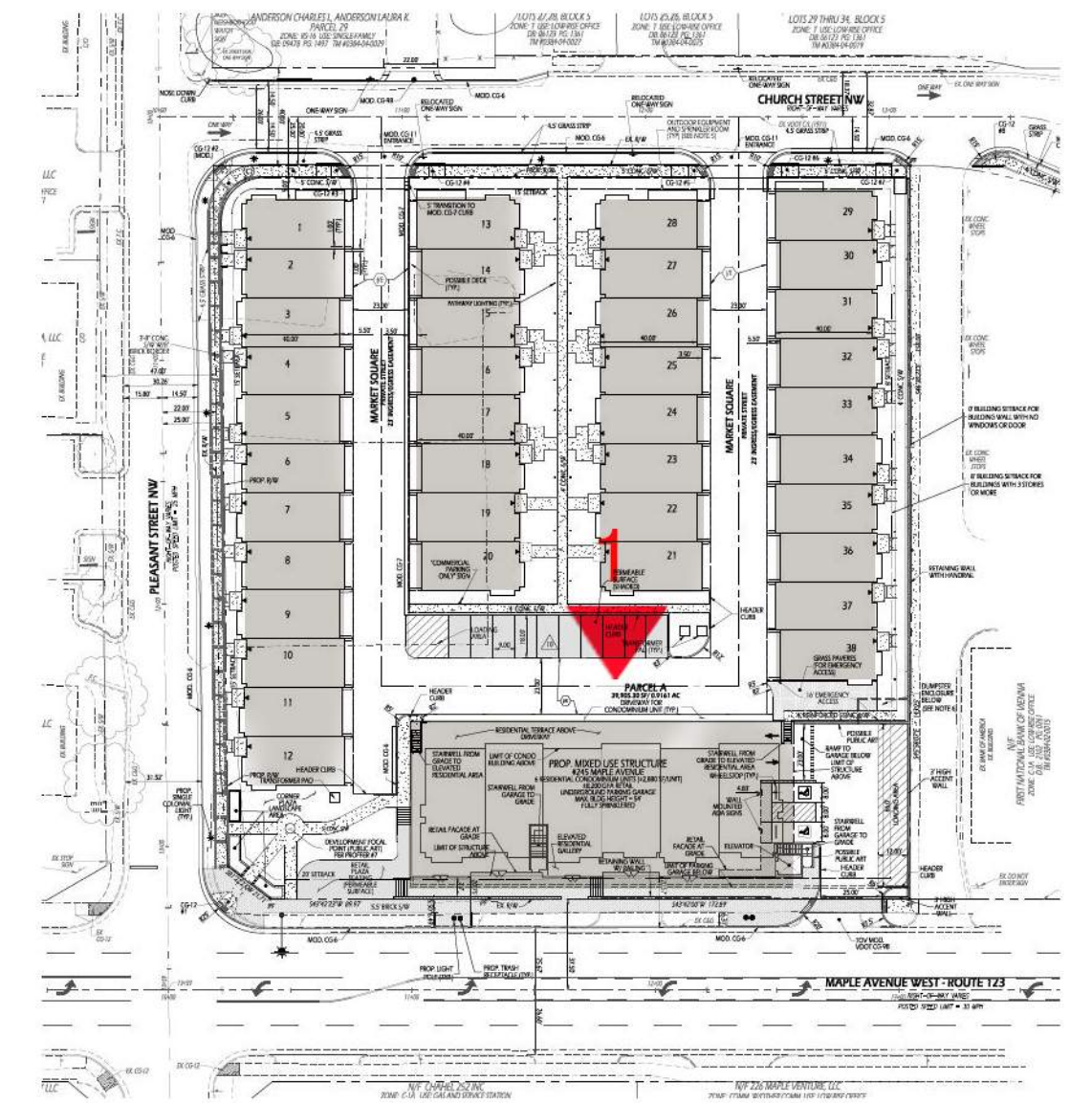
LOT 38
ELEV. 1
SCHEME #2B

MAPLE AVENUE

1. MAPLE AVENUE - PROPOSED



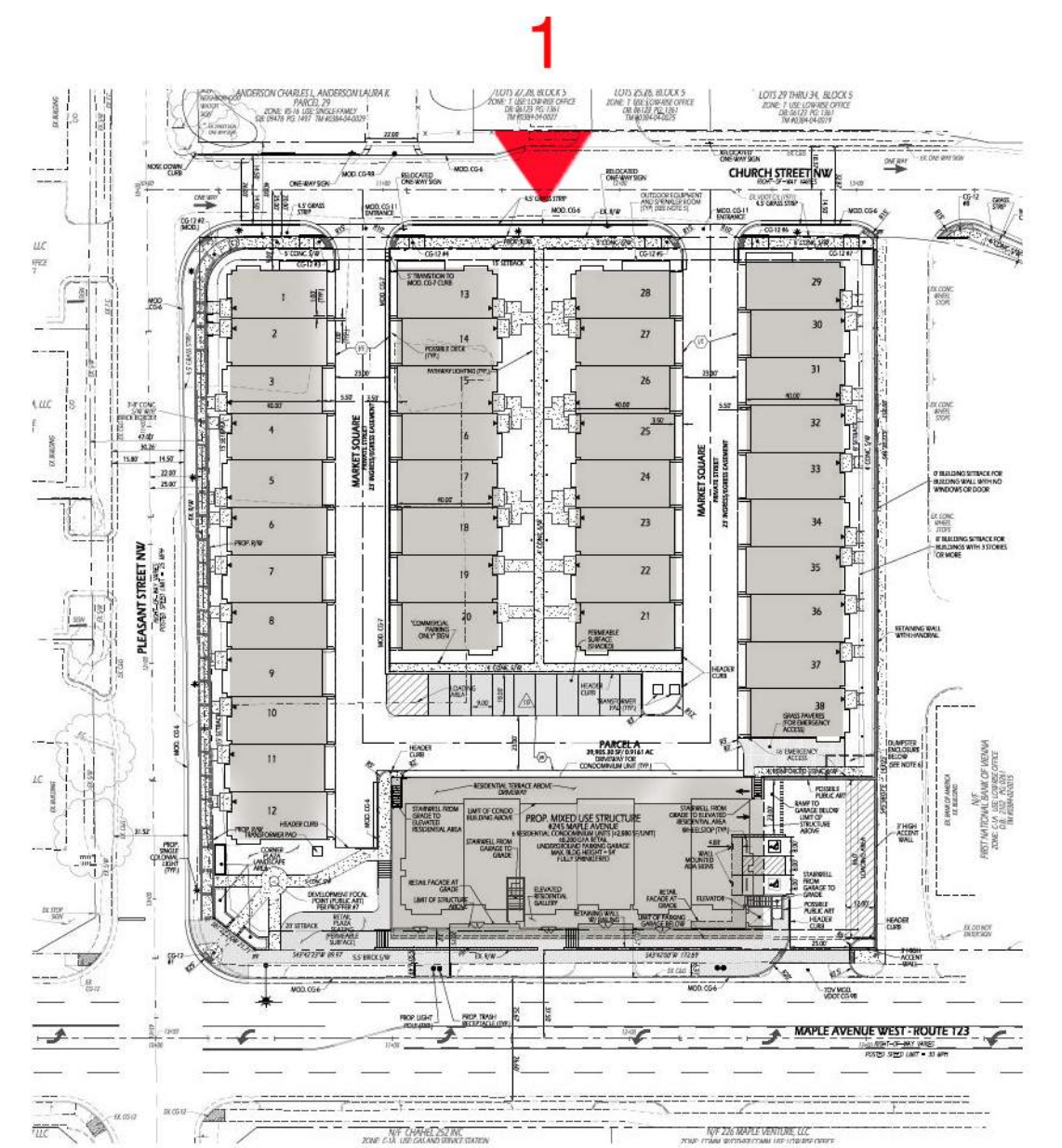
NOTE: LOCATION OF
FUTURE ART WORK



KEY PLAN



1. REAR MAPLE AVENUE - PROPOSED



KEY PLAN

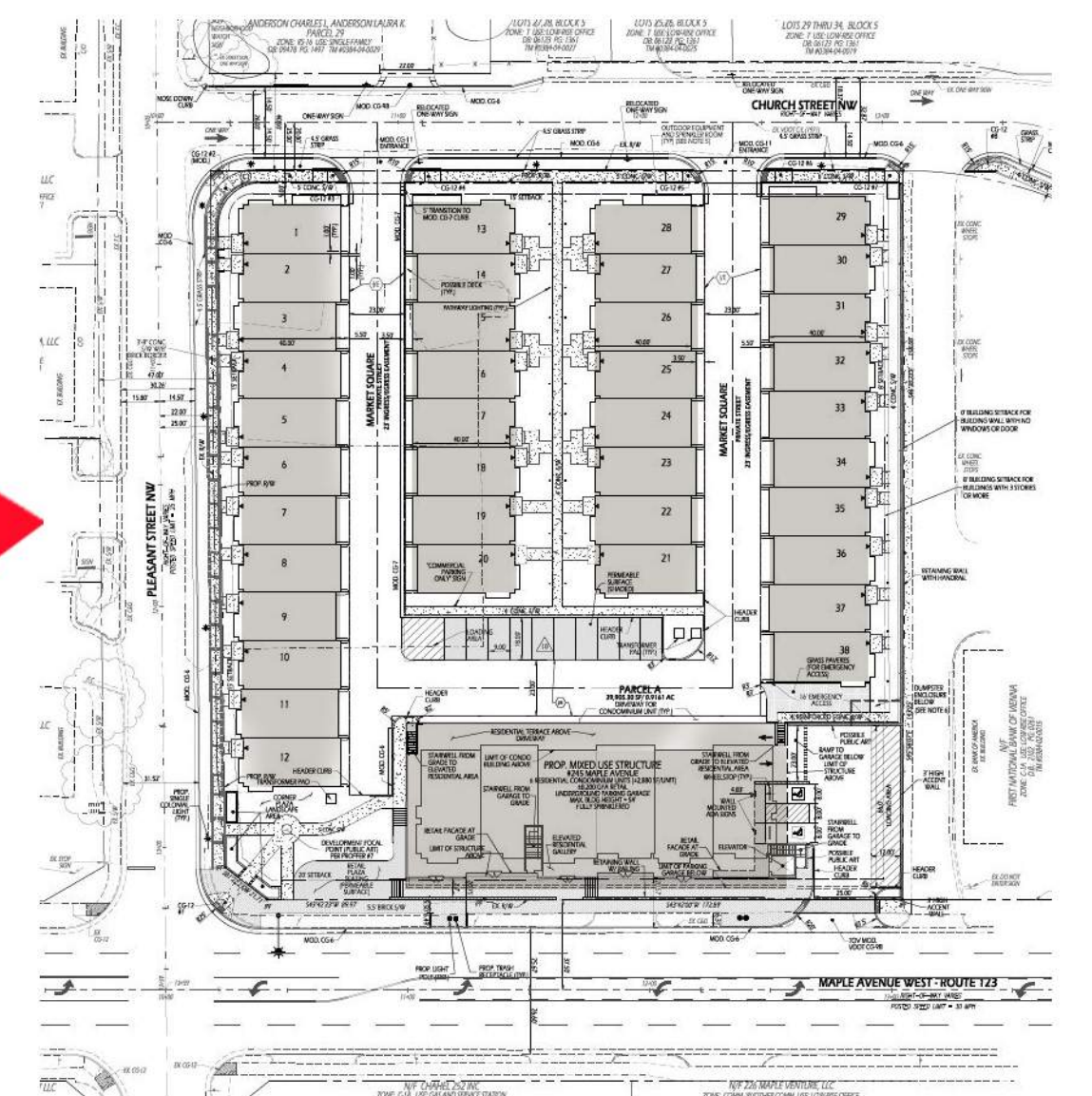


1. 6 PANEL DOOR



1. CHURCH STREET - PROPOSED

1

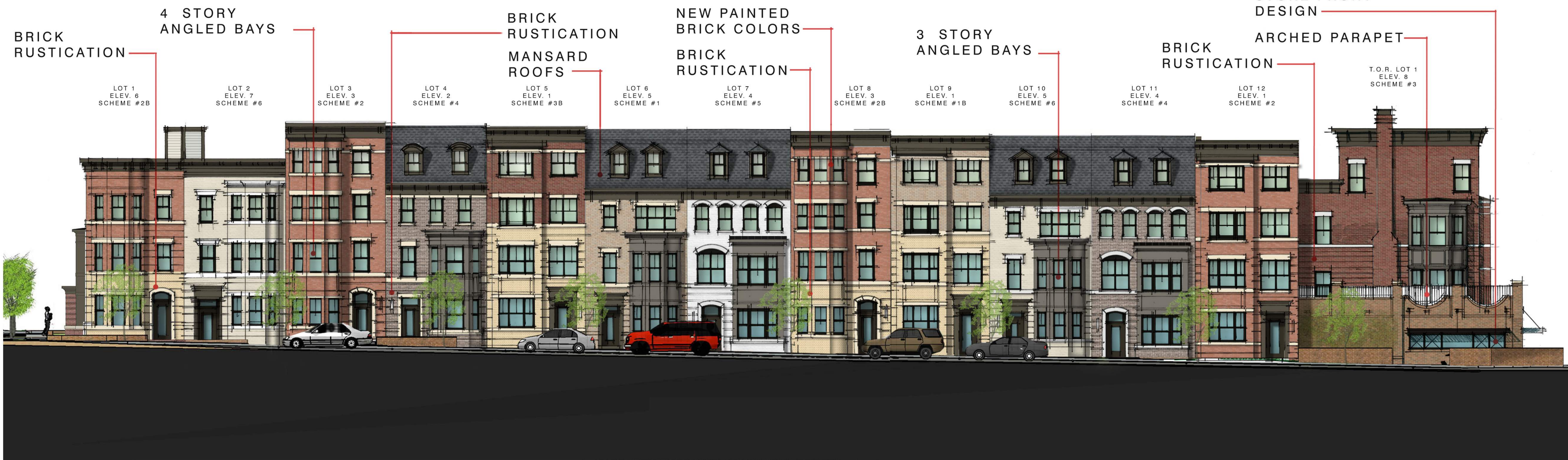


KEY PLAN

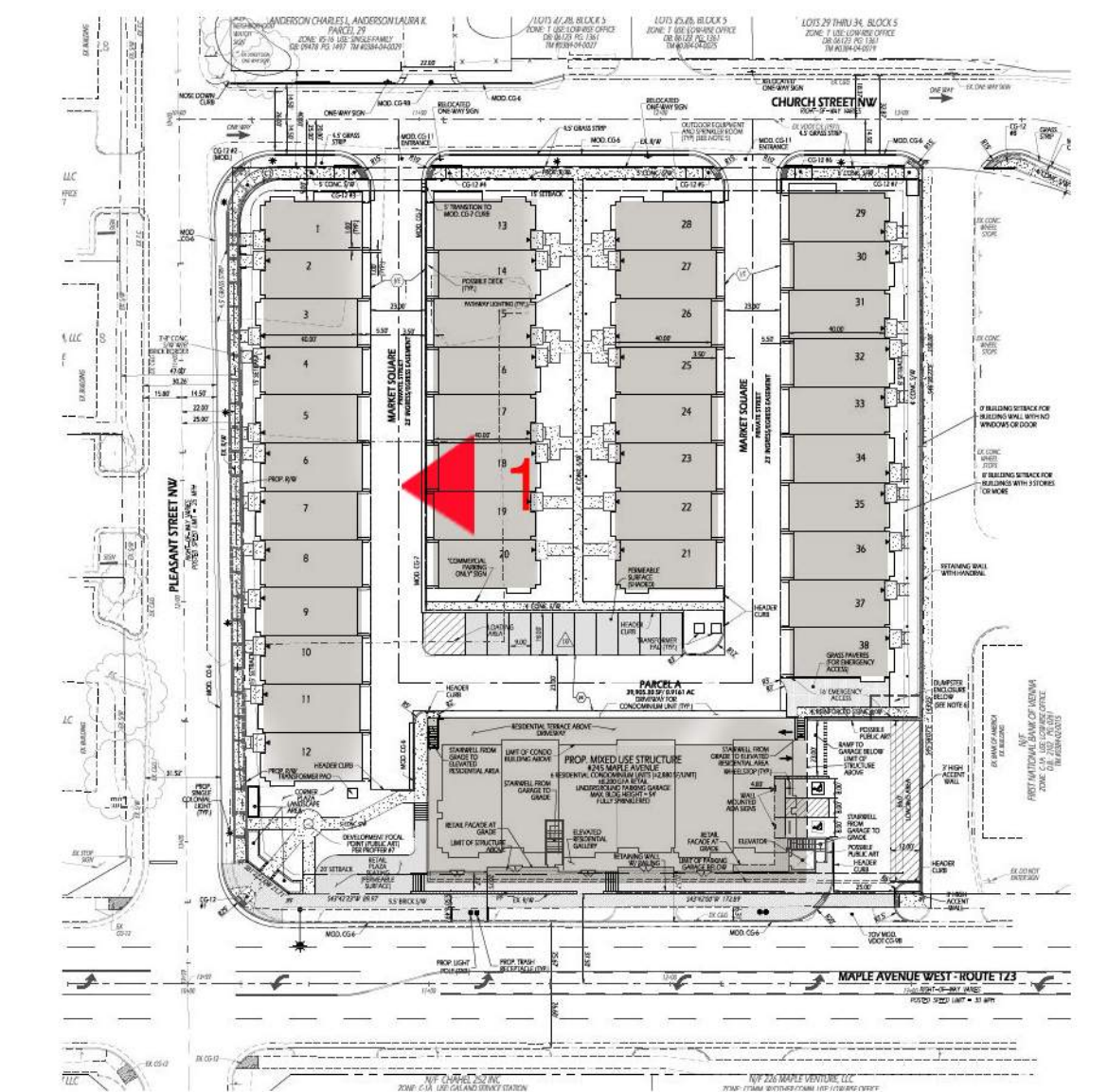
STORE FRONT
DESIGN

ARCHED PARAPET

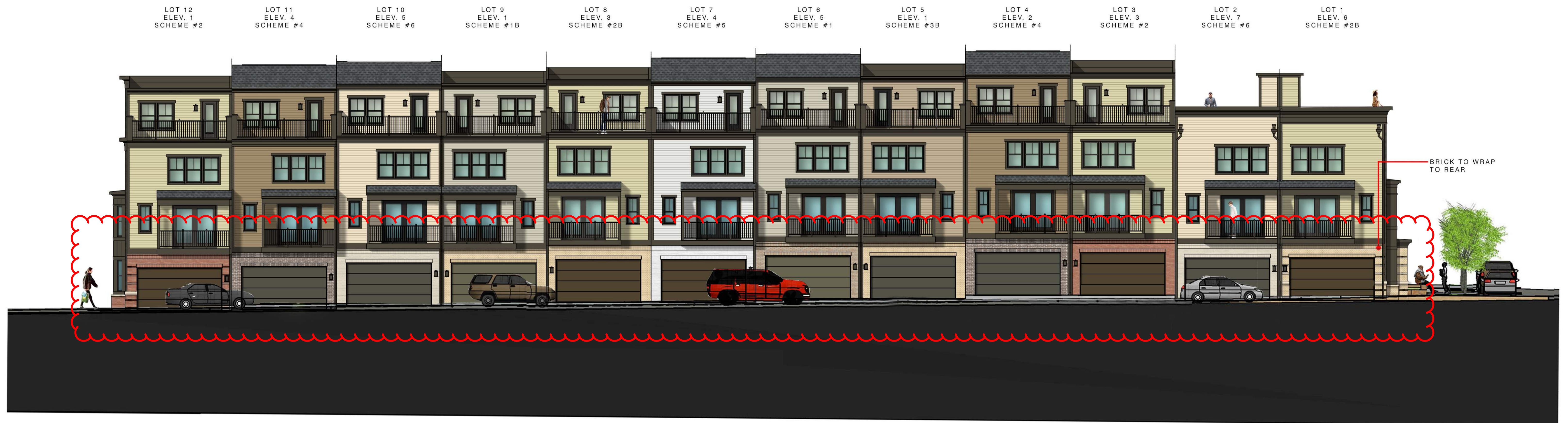
T.O.R. LOT 1
ELEV. 8
SCHEME #3



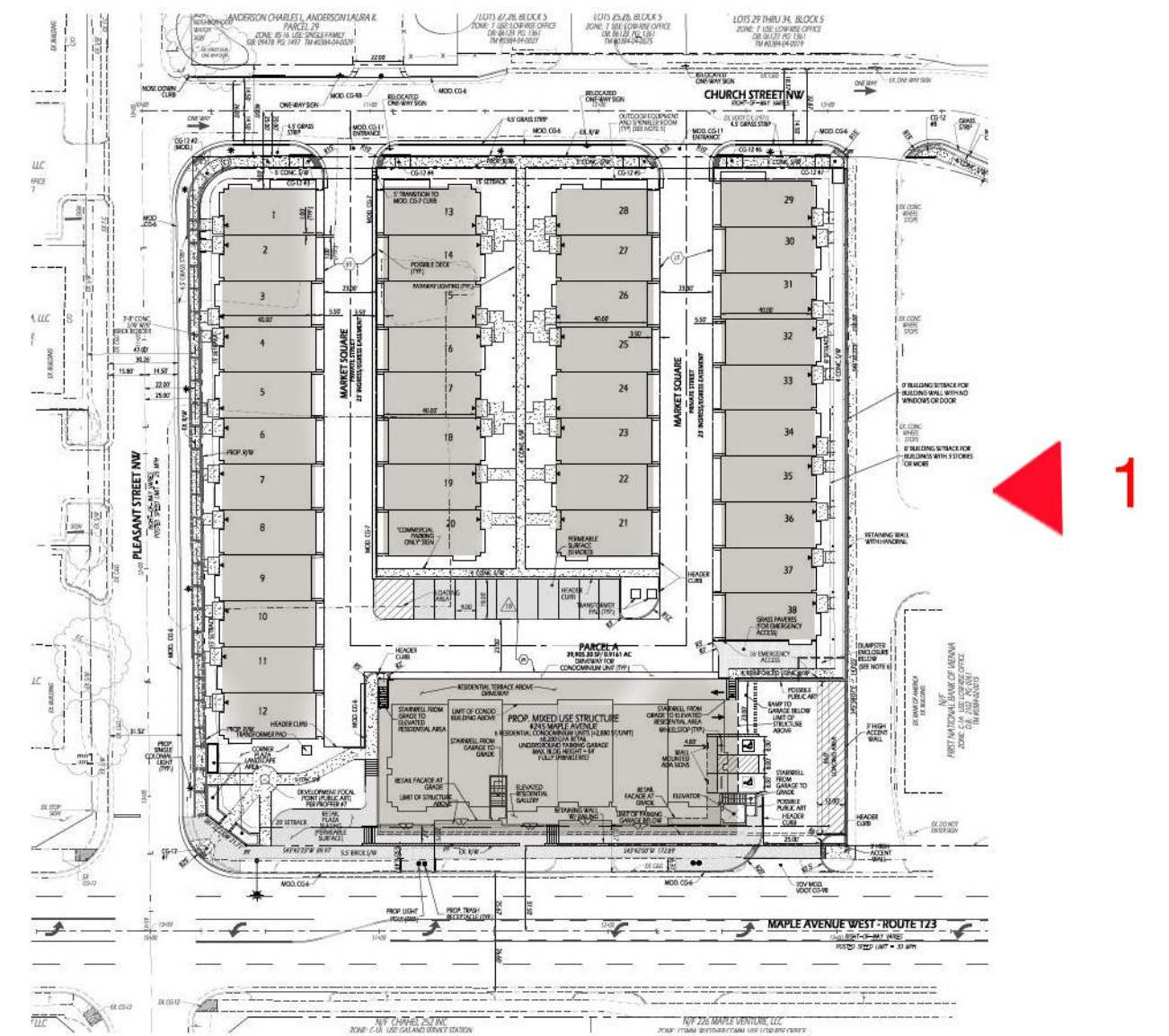
1. PLEASANT STREET - PROPOSED



KEY PLAN



1. PLEASANT STREET - PROPOSED

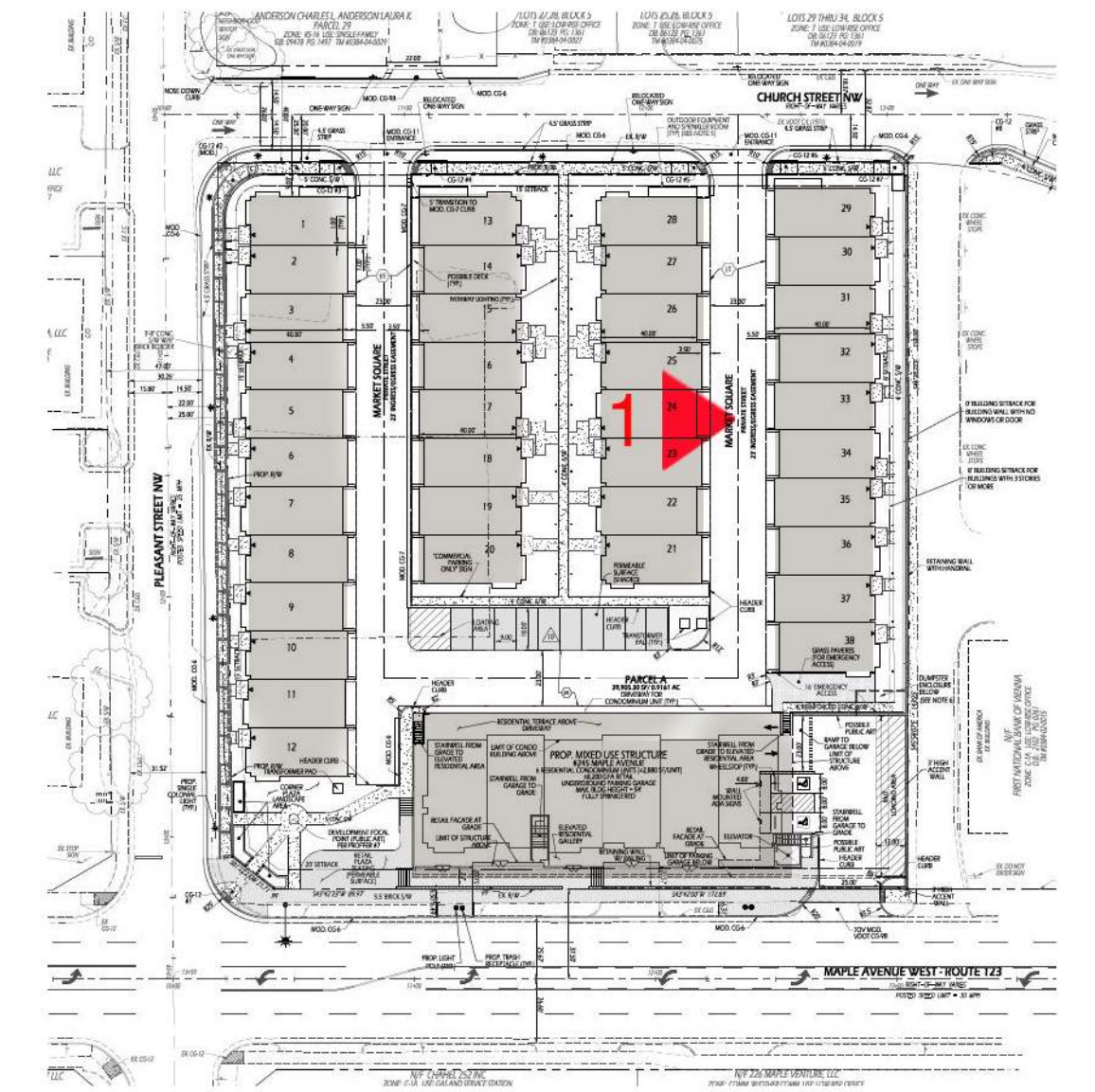


KEY PLAN

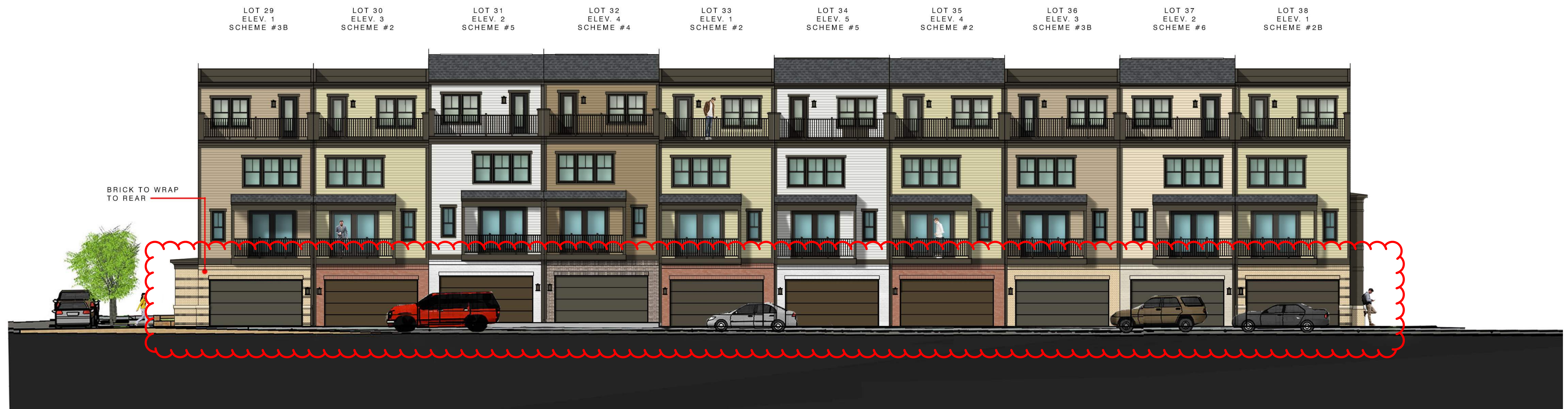


NOTE: LOCATION OF
FUTURE ART WORK

1. BANK OF AMERICA VIEW - PROPOSED



KEY PLAN



1. REAR BANK OF AMERICA STREET VIEW

LOT 28
ELEV. 3
SCHEME #3B

LOT 27
ELEV. 2
SCHEME #4

LOT 26
ELEV. 1
SCHEME #5

LOT 25
ELEV. 1
SCHEME #2

LOT 24
ELEV. 3
SCHEME #3B

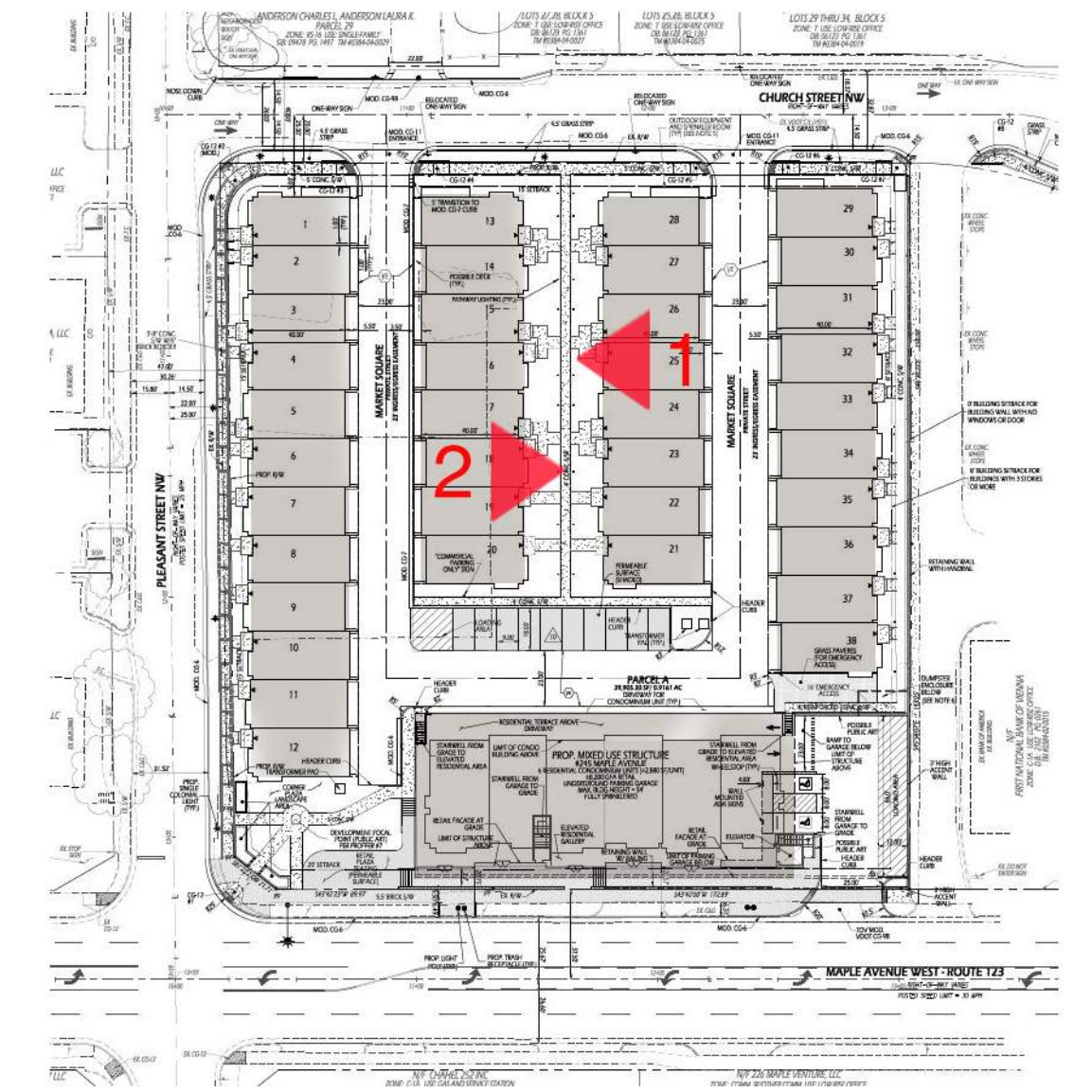
LOT 23
ELEV. 4
SCHEME #1

LOT 22
ELEV. 5
SCHEME #6

LOT 21
ELEV. 1
SCHEME #2B



2. INTERIOR STRIP ELEVATION 2



KEY PLAN

LOT 20
ELEV. 3
SCHEME #3B

LOT 19
ELEV. 1
SCHEME #2

LOT 18
ELEV. 5
SCHEME #1

LOT 17
ELEV. 4
SCHEME #5

LOT 16
ELEV. 1
SCHEME #3B

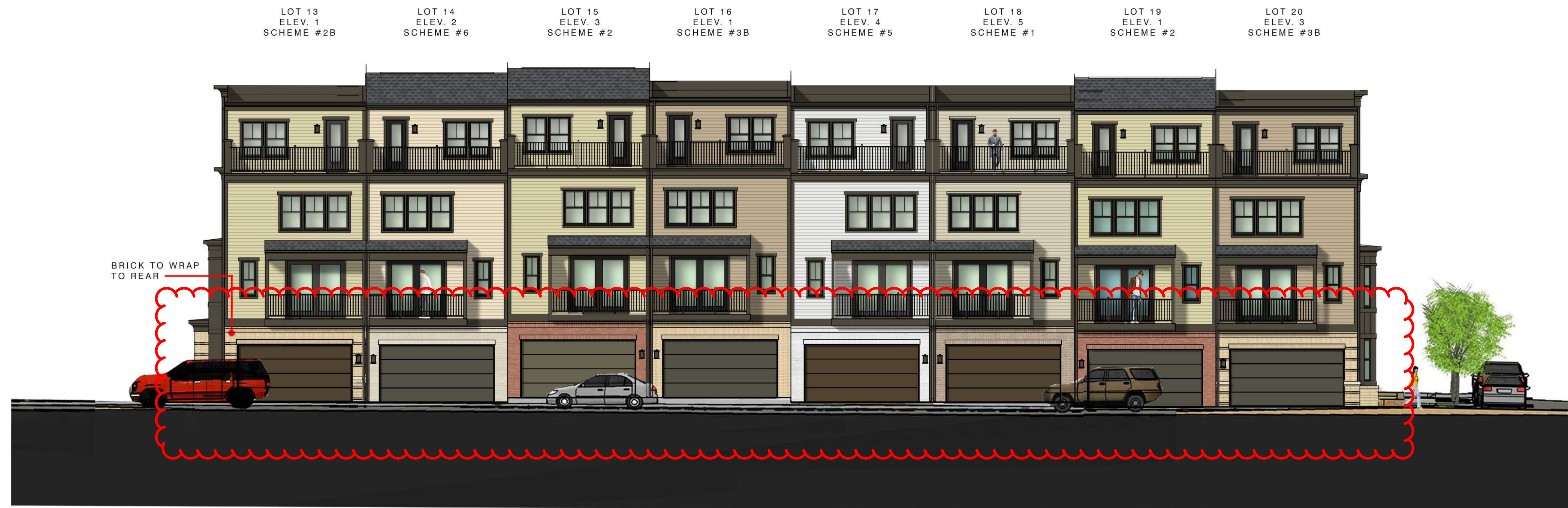
LOT 15
ELEV. 3
SCHEME #2

LOT 14
ELEV. 2
SCHEME #6

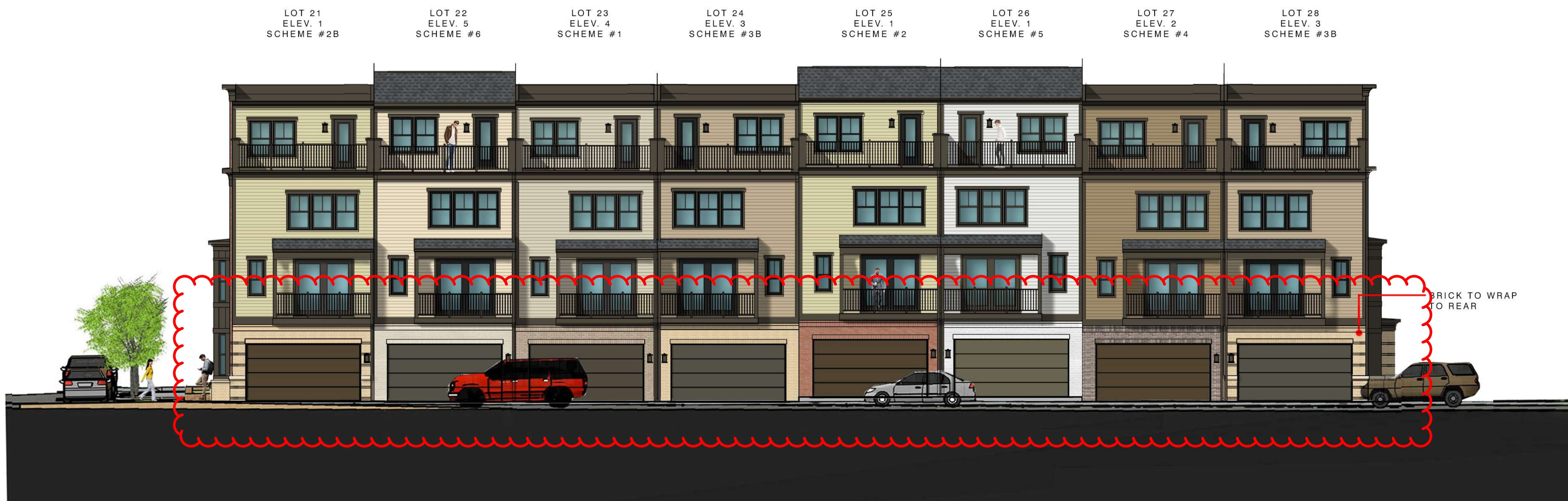
LOT 13
ELEV. 1
SCHEME #2B



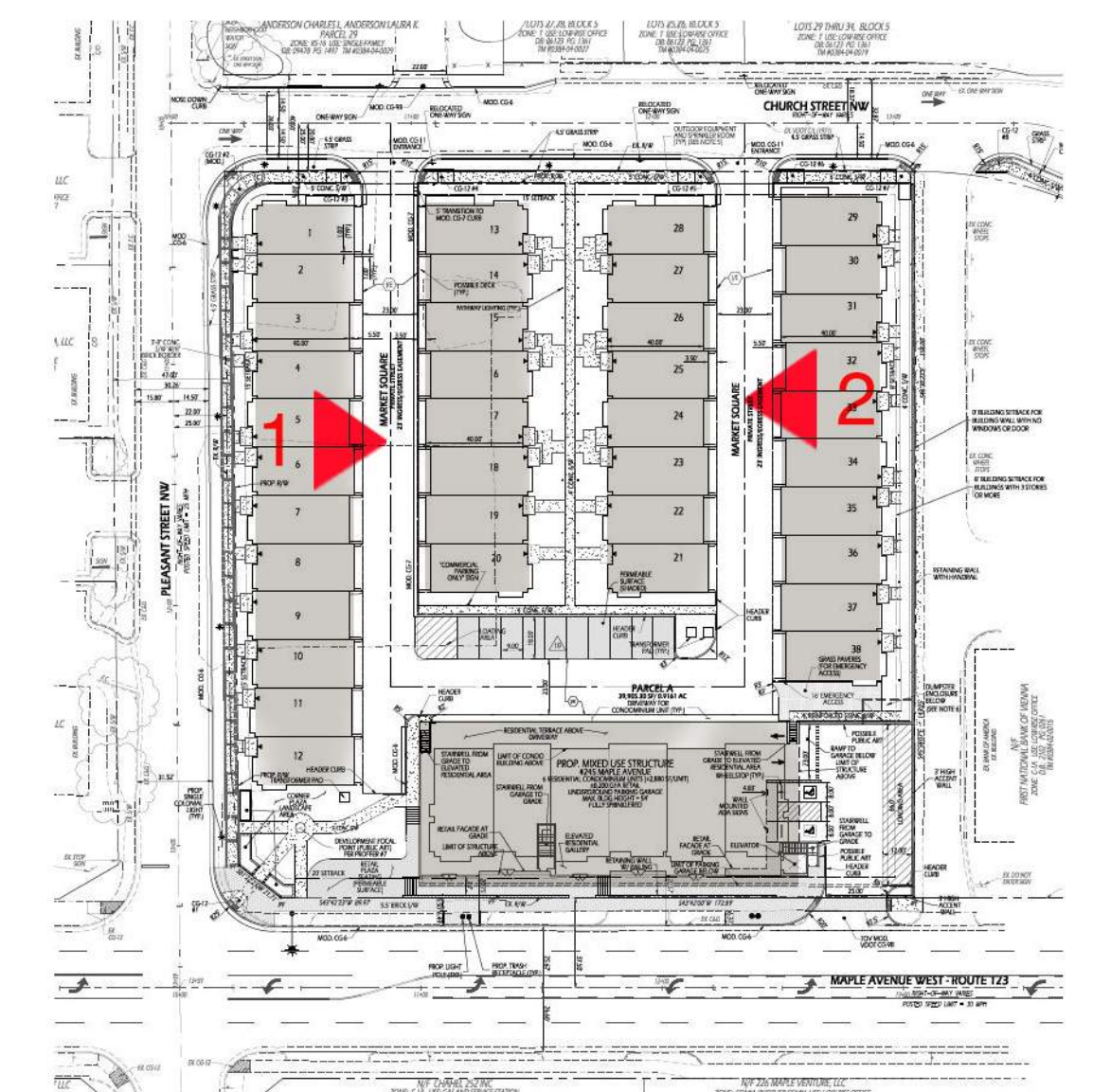
1. INTERIOR STRIP ELEVATION 1



1. REAR INTERIOR STRIP 1



2. REAR INTERIOR STRIP 2



KEY PLAN



MAPLE AVE.

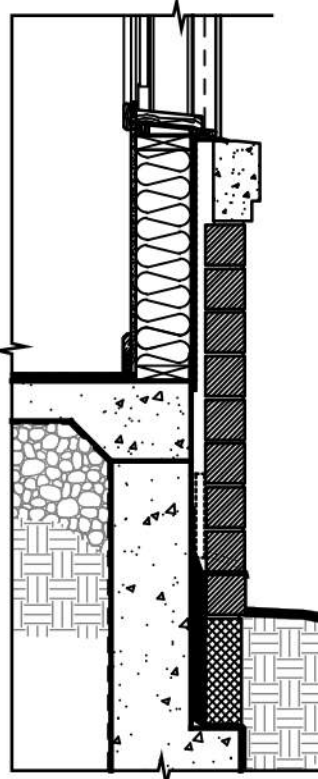
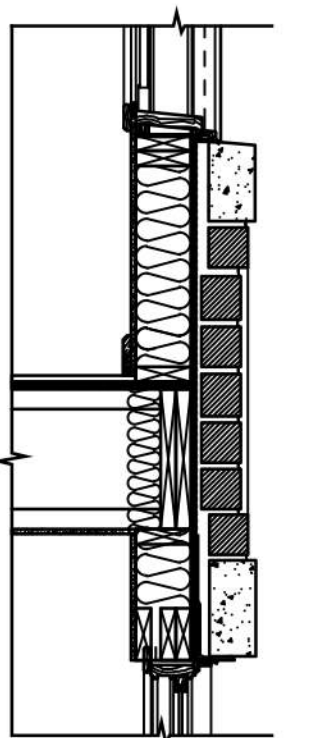
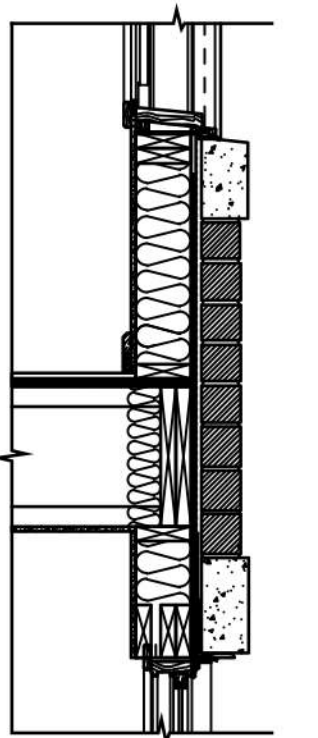
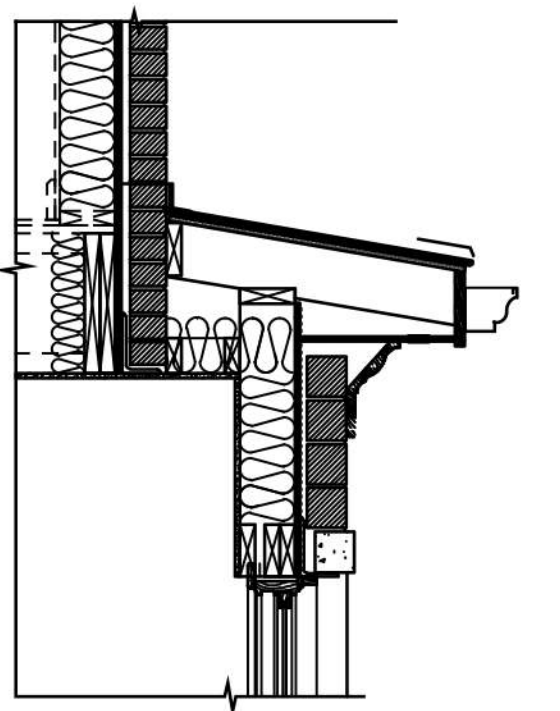


PLEASANT STREET

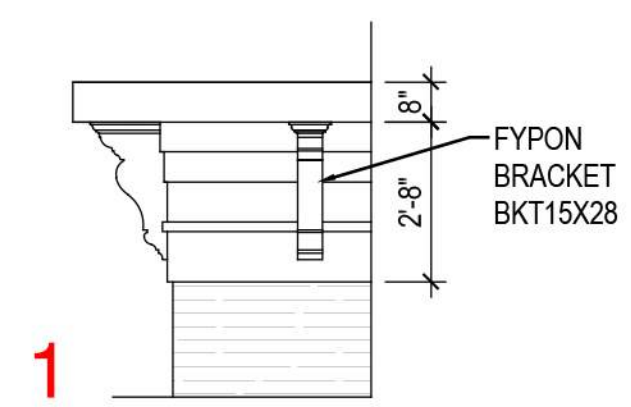


BANK OF AMERICA VIEW

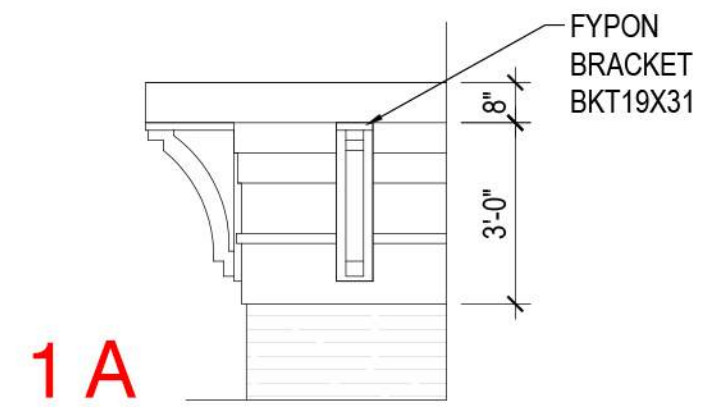
PROPOSED BAY DETAILS



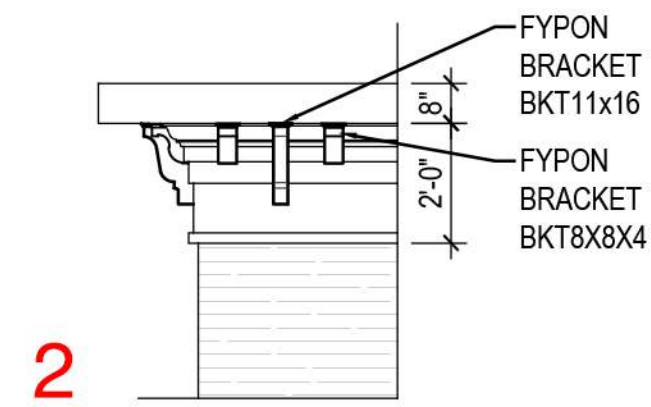
PROPOSED CORNICE PROFILES



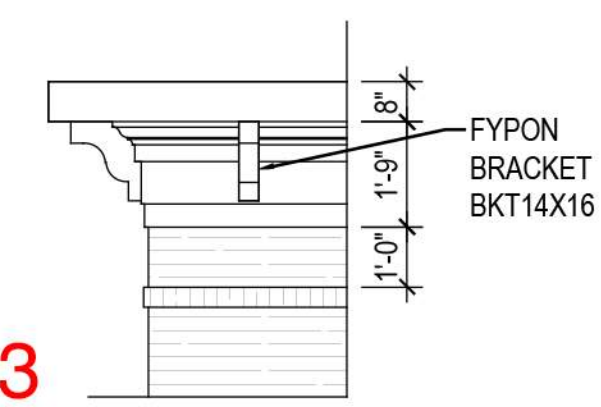
1



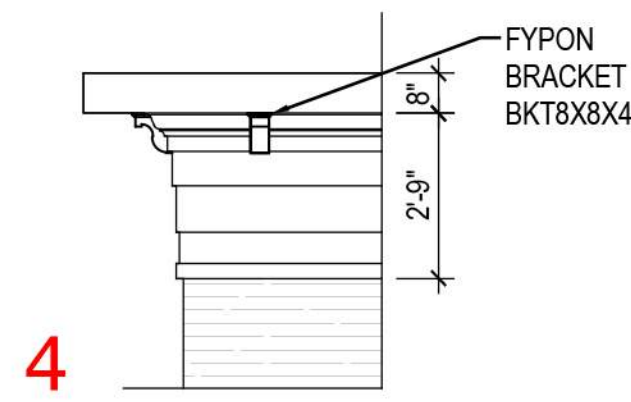
1A



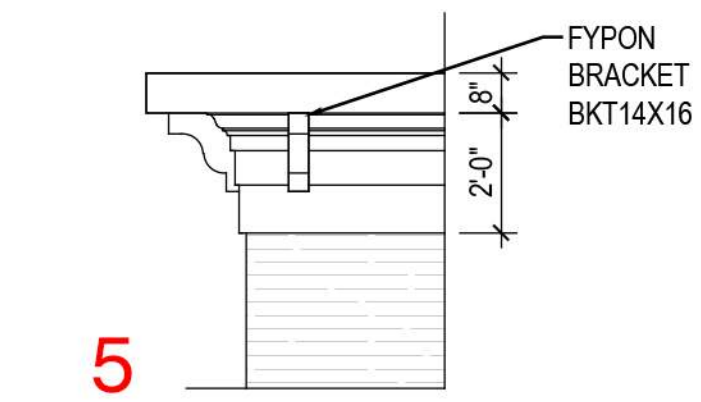
2



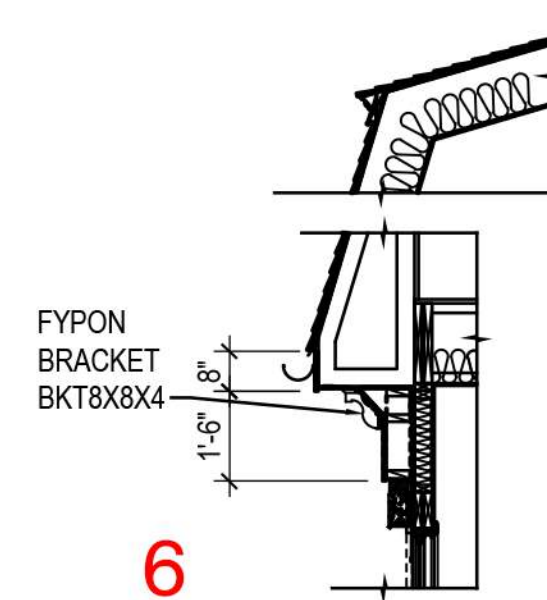
3



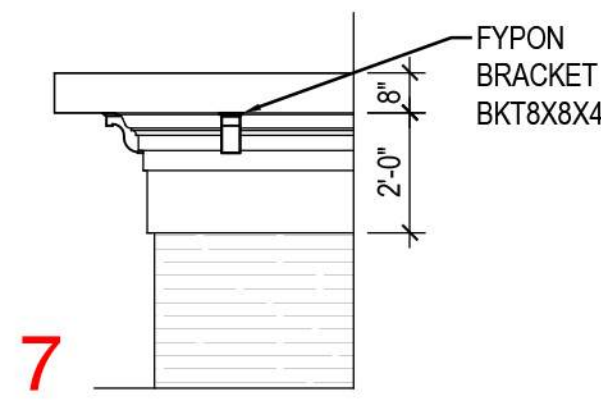
4



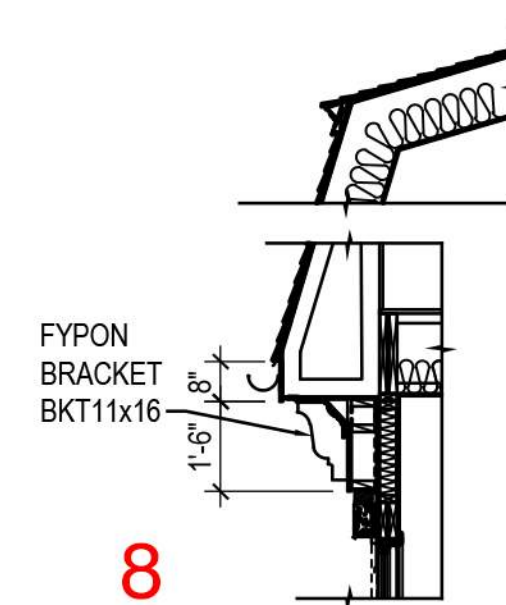
5



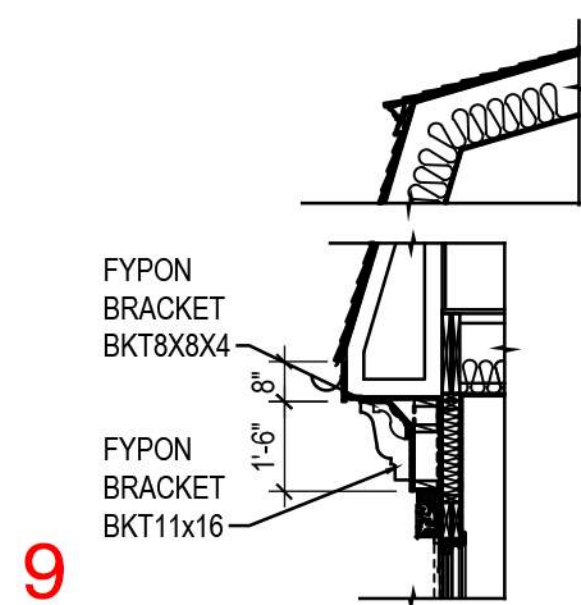
6



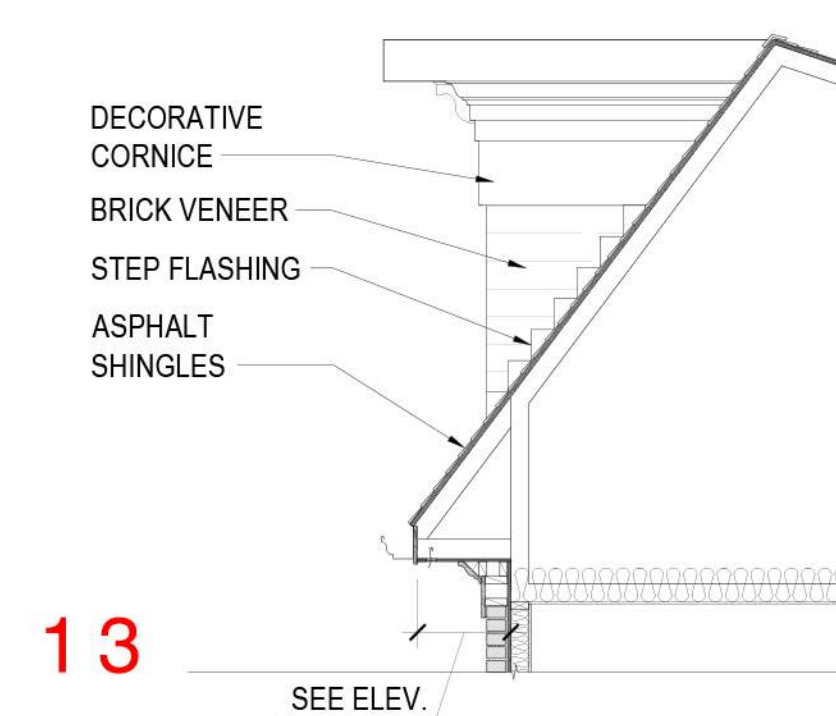
7



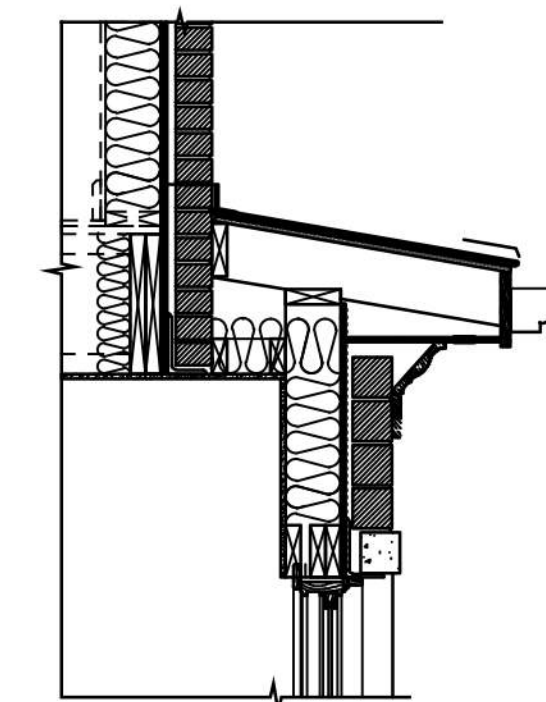
8



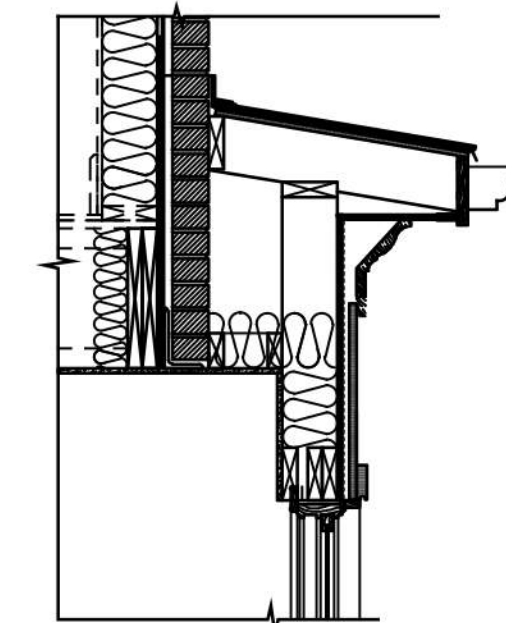
9



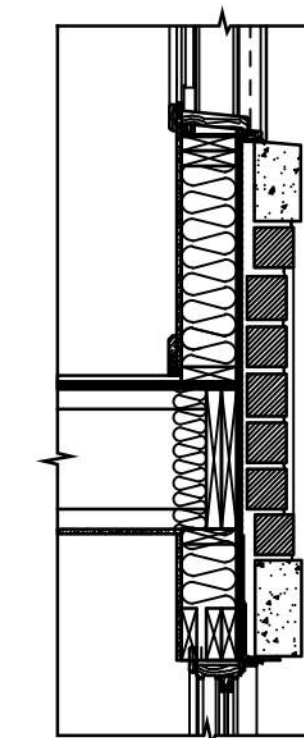
13



10



11



12



MAPLE AVE.



PLEASANT STREET

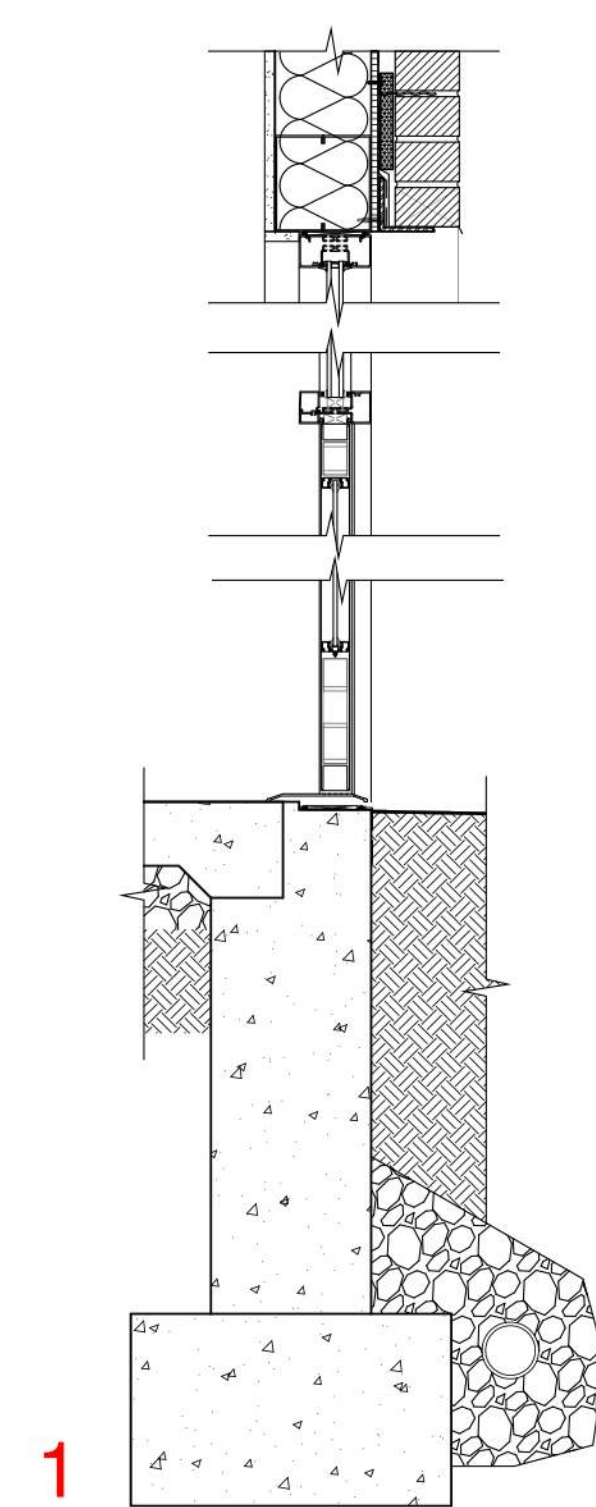


BANK OF AMERICA VIEW

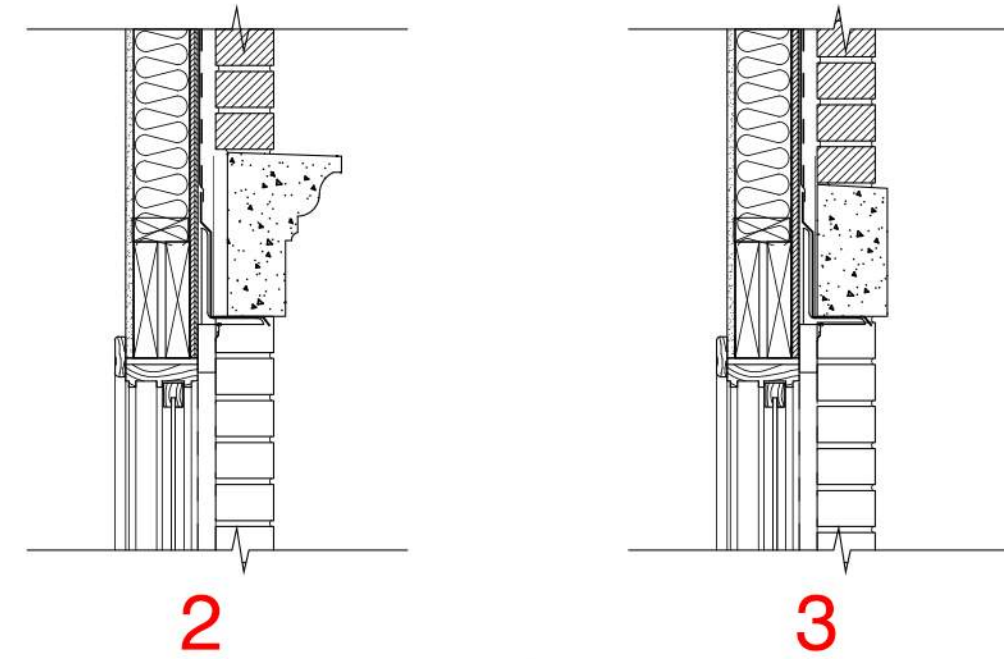
PROPOSED ENTRY DETAILS

PROPOSED WINDOW SECTIONS

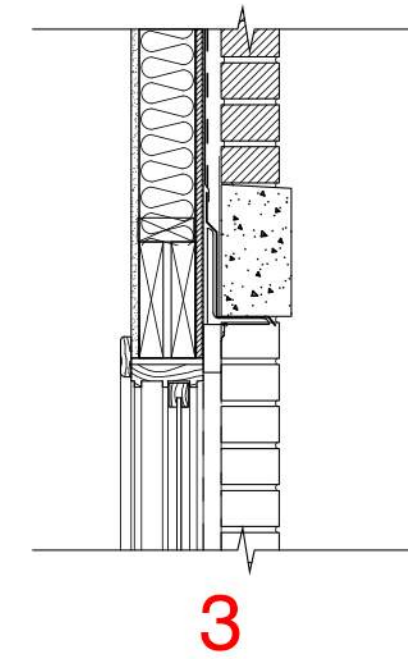
PROPOSED WALL SECTION DETAILS



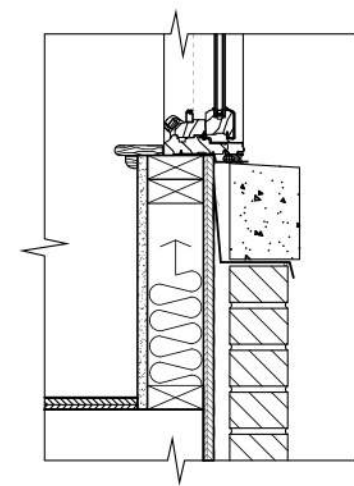
1



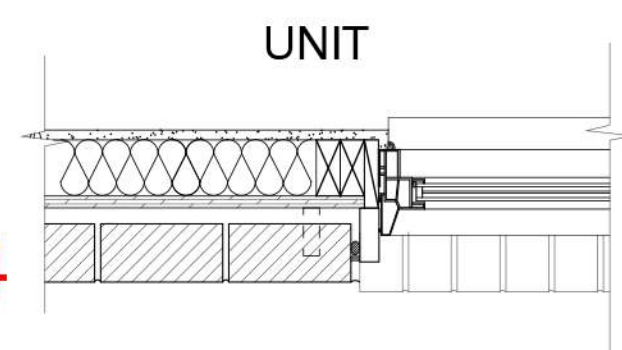
2



3

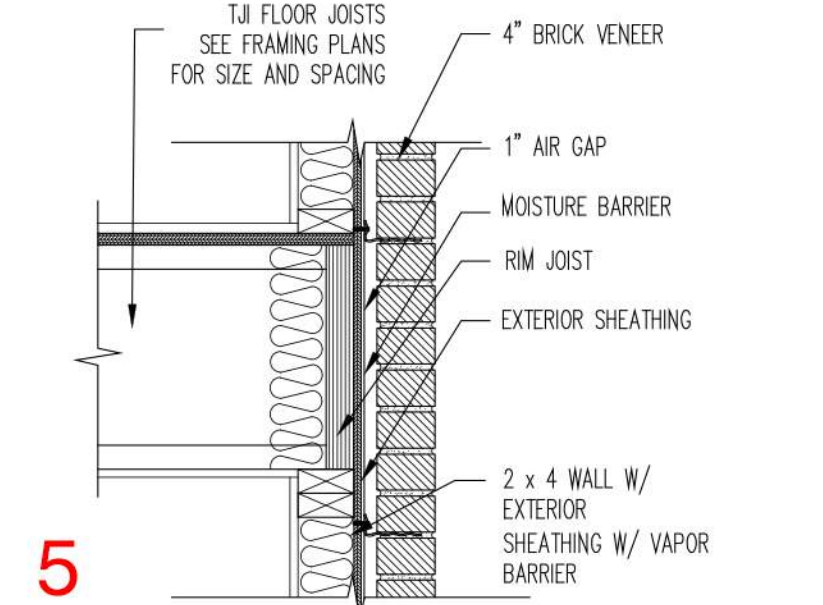


4

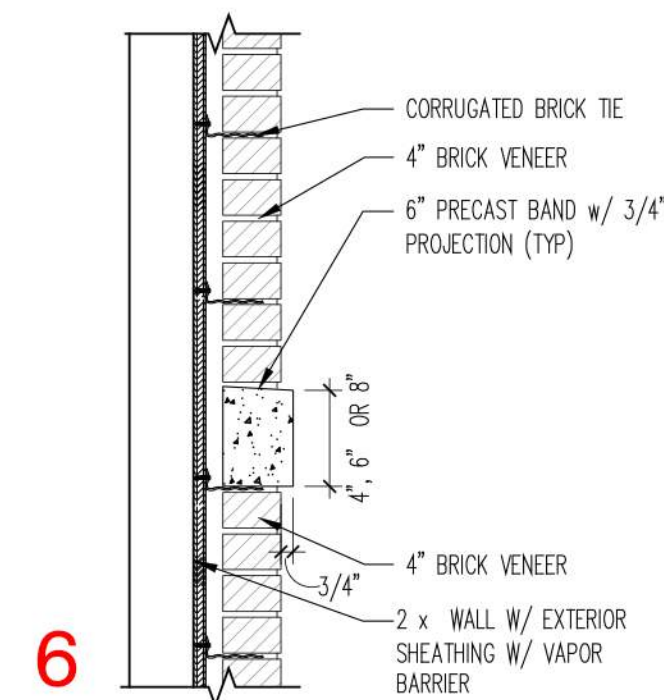


UNIT

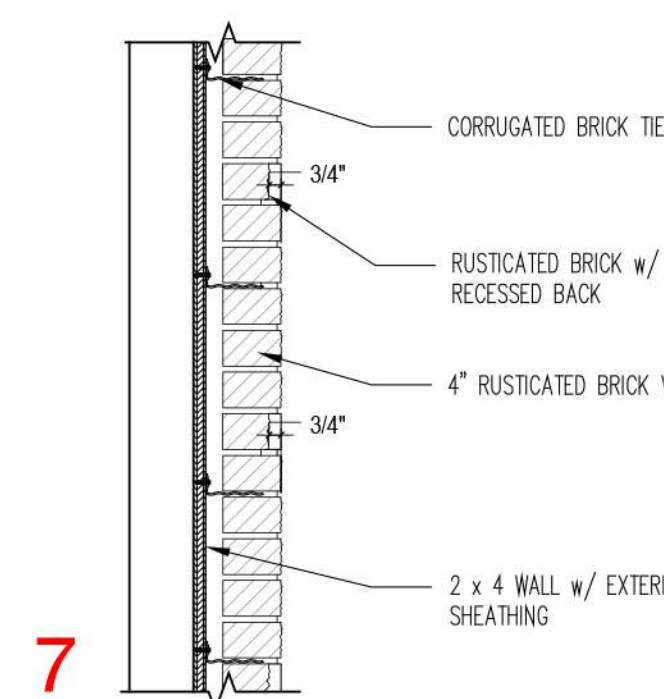
EXTERIOR



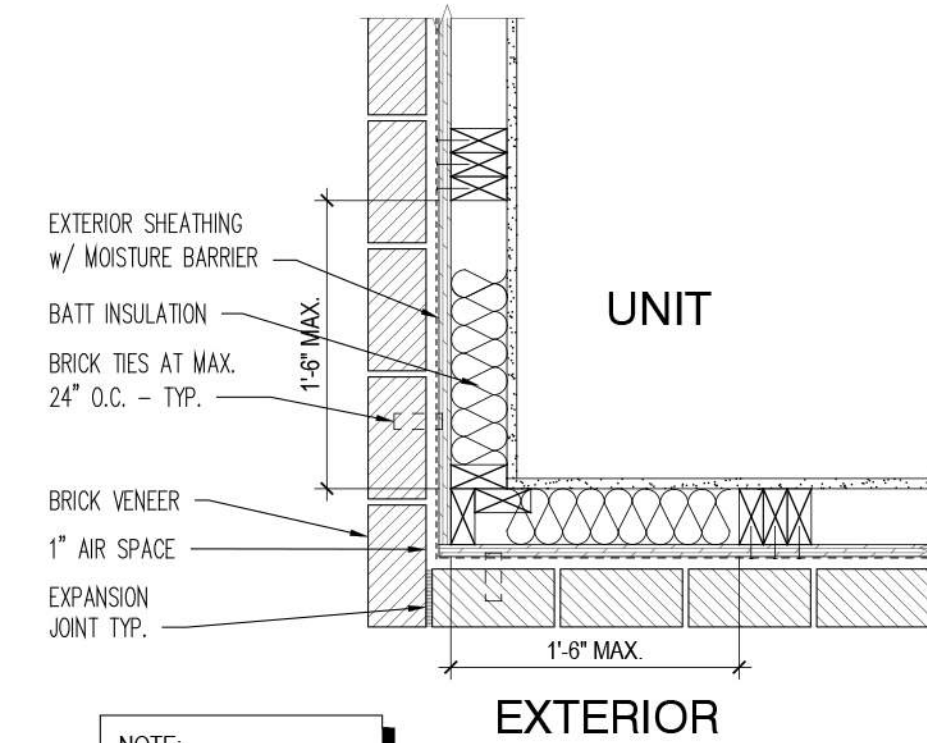
5



6



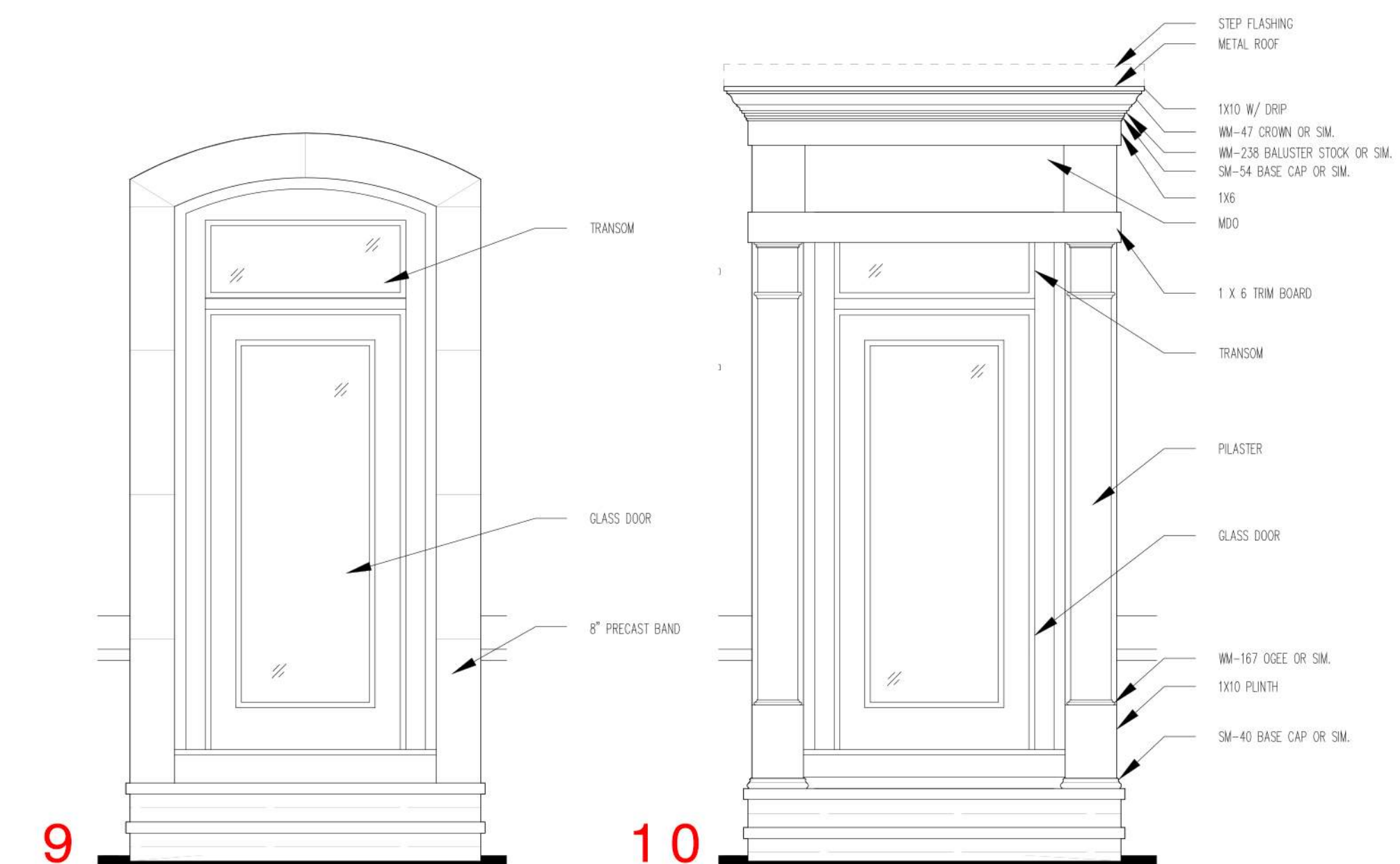
7



8

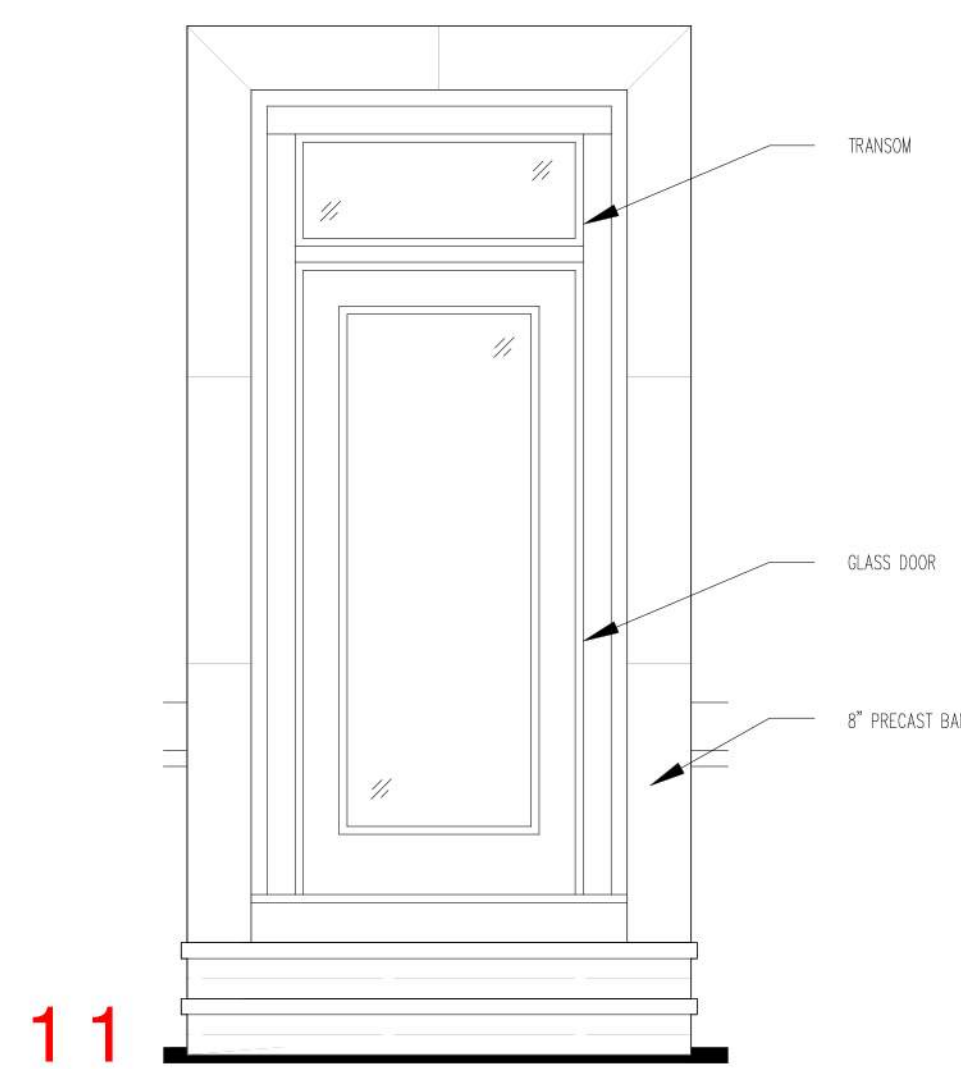


RUSTICATED BRICK EXAMPLE

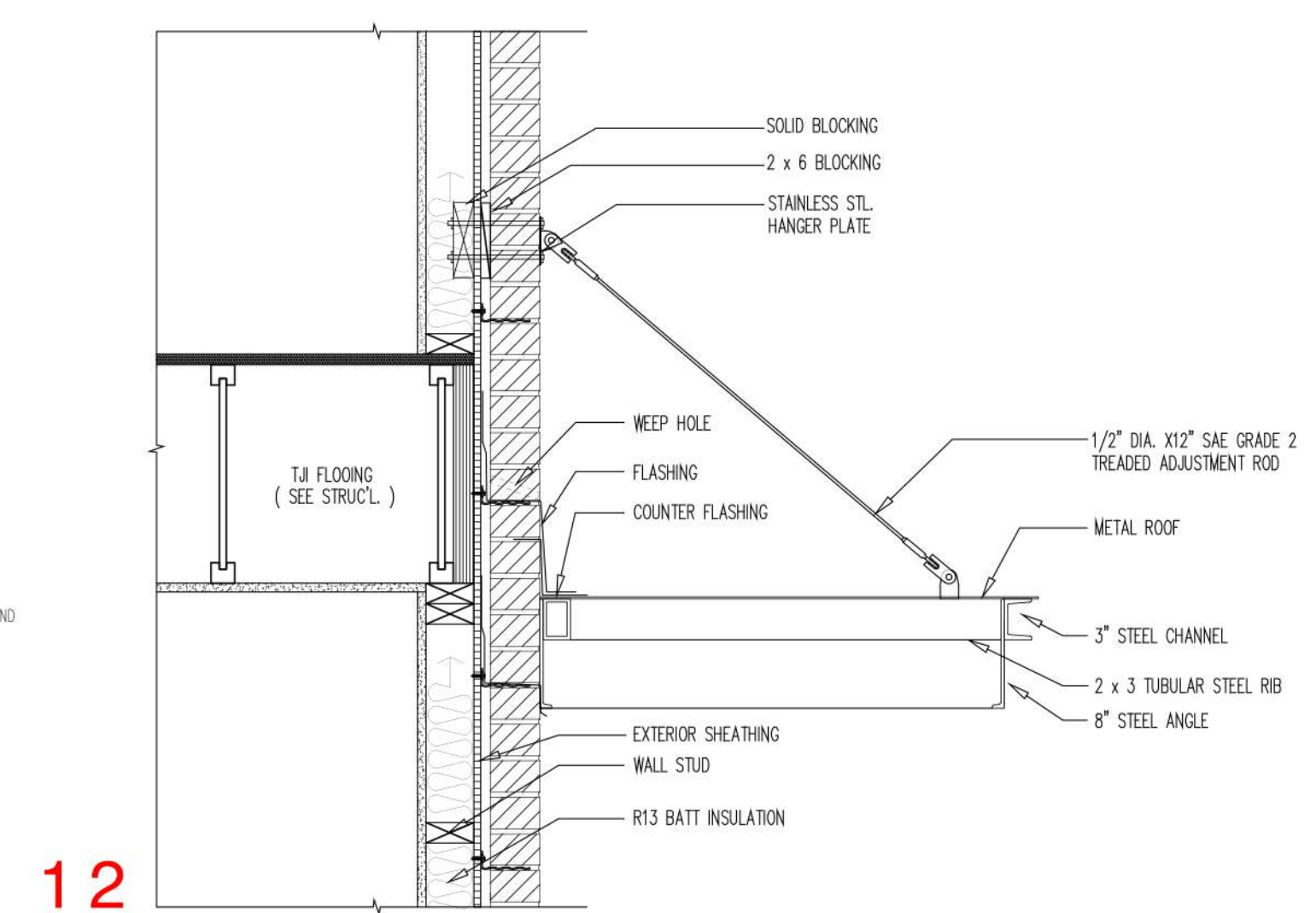


9

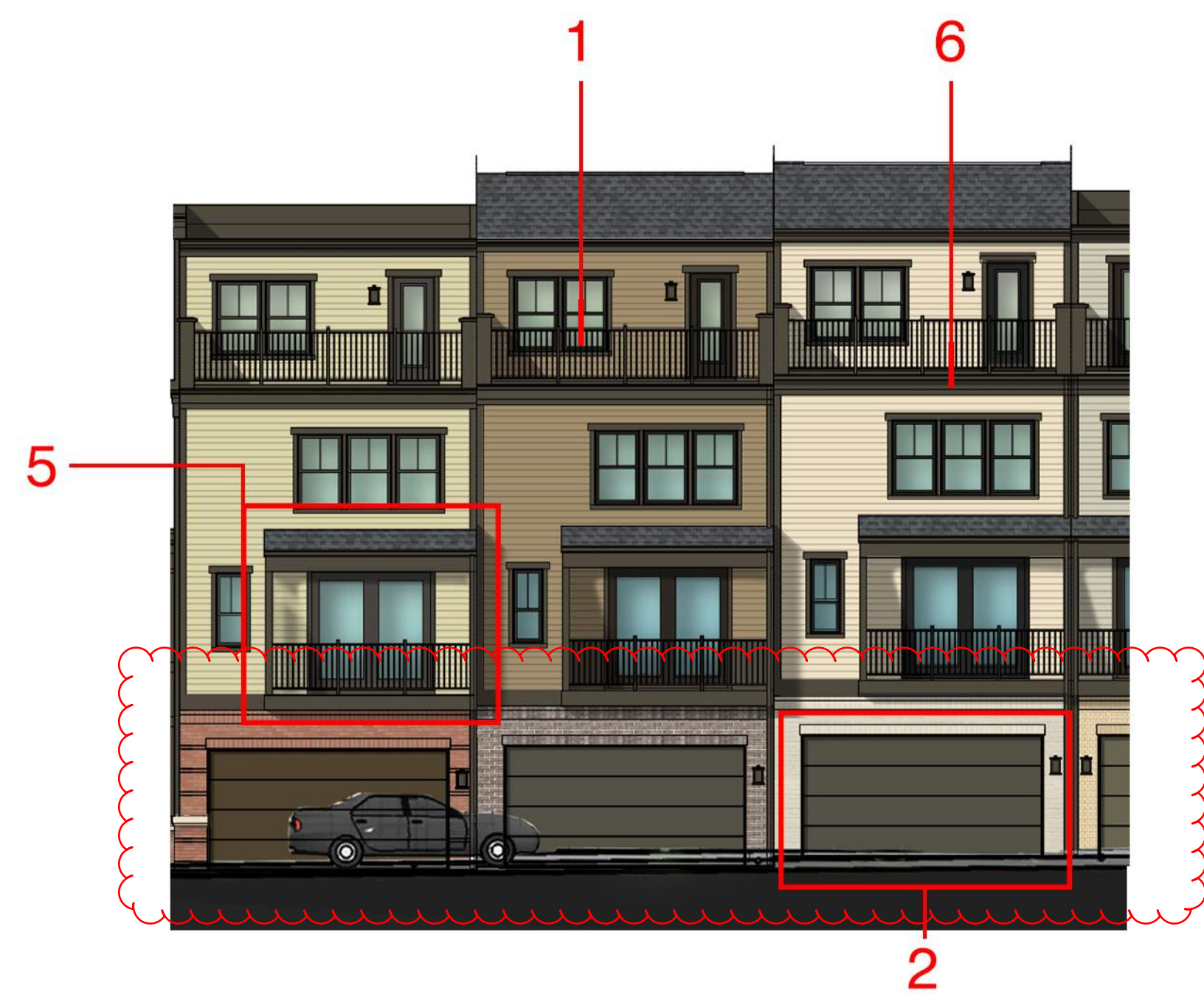
10



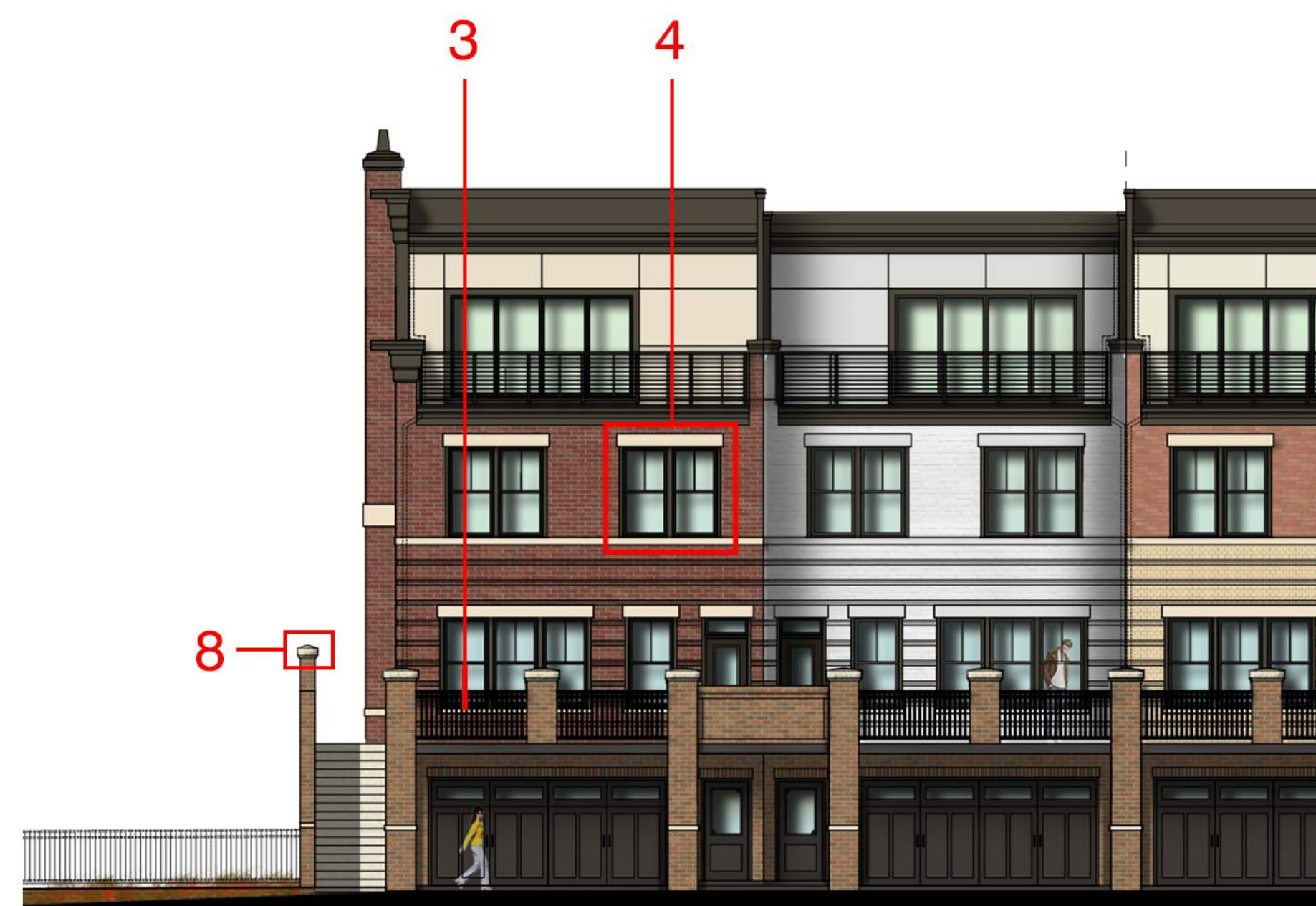
11



12



BANK OF AMERICA VIEW

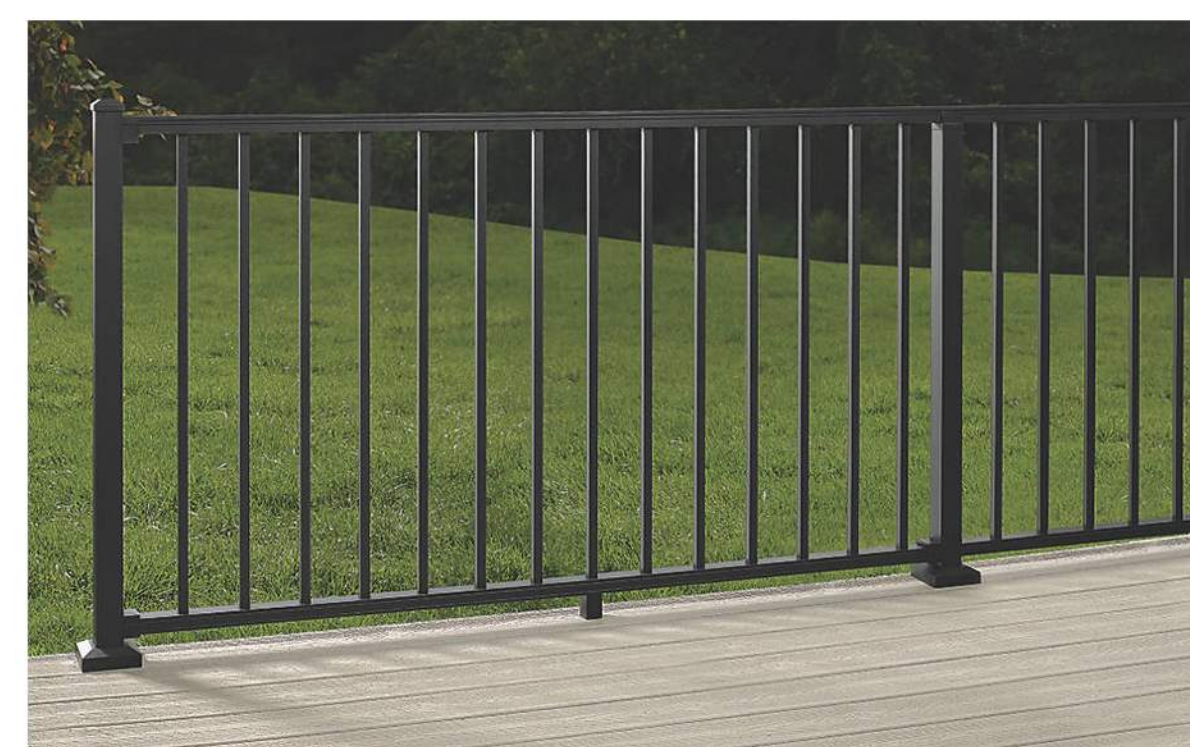


MAPLE AVE.

NOTE:
REAR PANELS
TO BE HARDIE



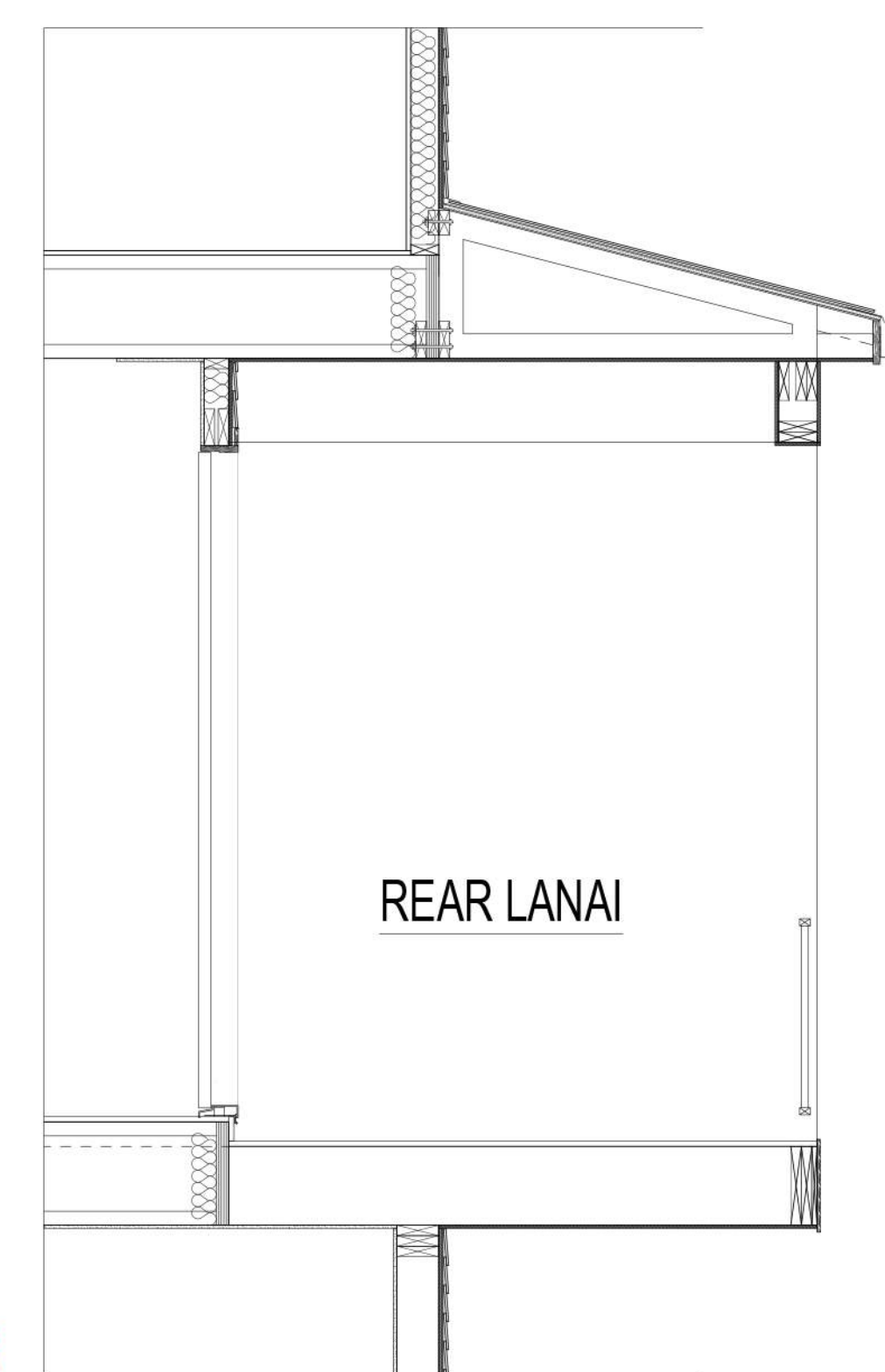
7. RETAINING WALL
VERTICA - DAKOTA BLEND



1. TREX SIGNATURE
ALUMINUM RAILING
- BLACK



3. POWDER COATED
ALUMINUM RAILING
- BLACK



5



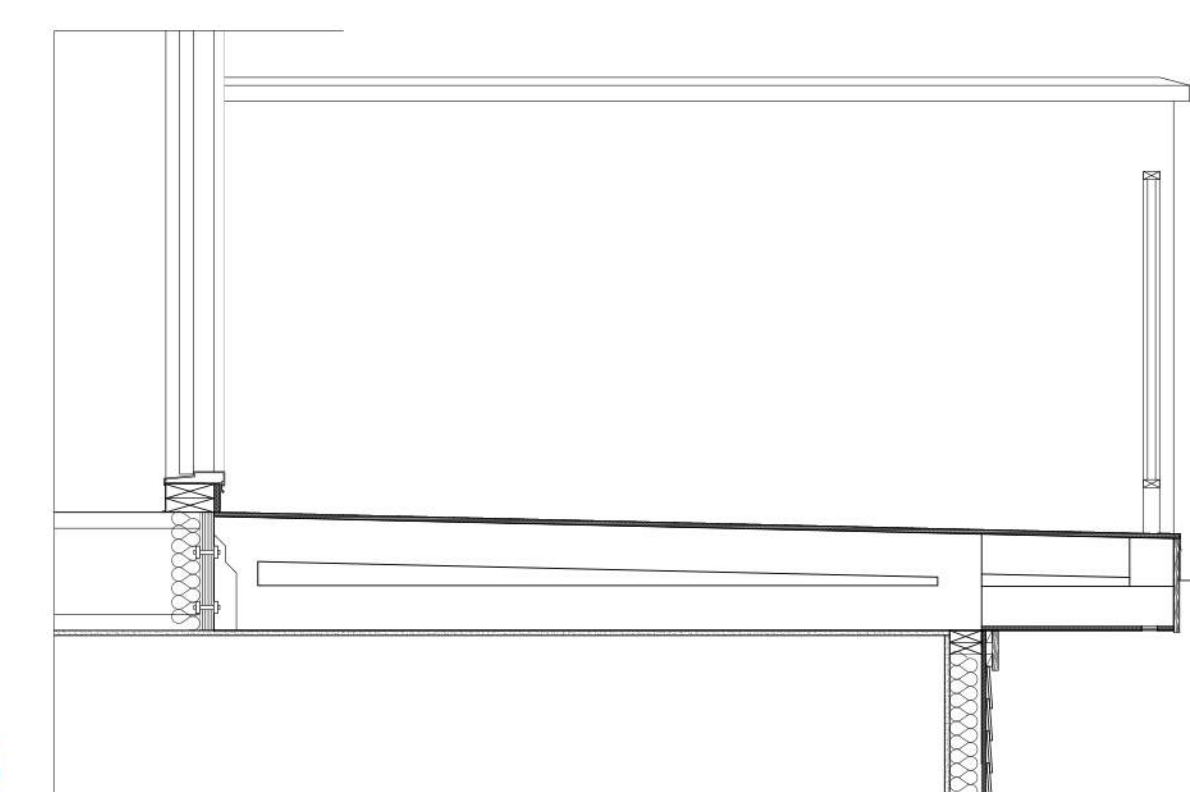
8. PRECAST CAP
WARM PRECAST COLOR



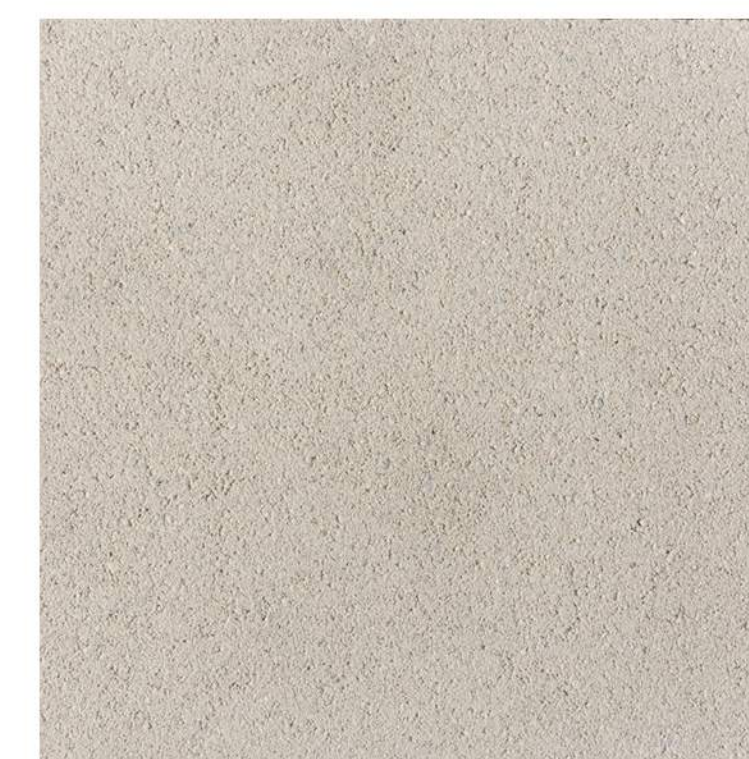
2. AMARR LINCOLN
FLUSH PANEL
GARAGE DOOR



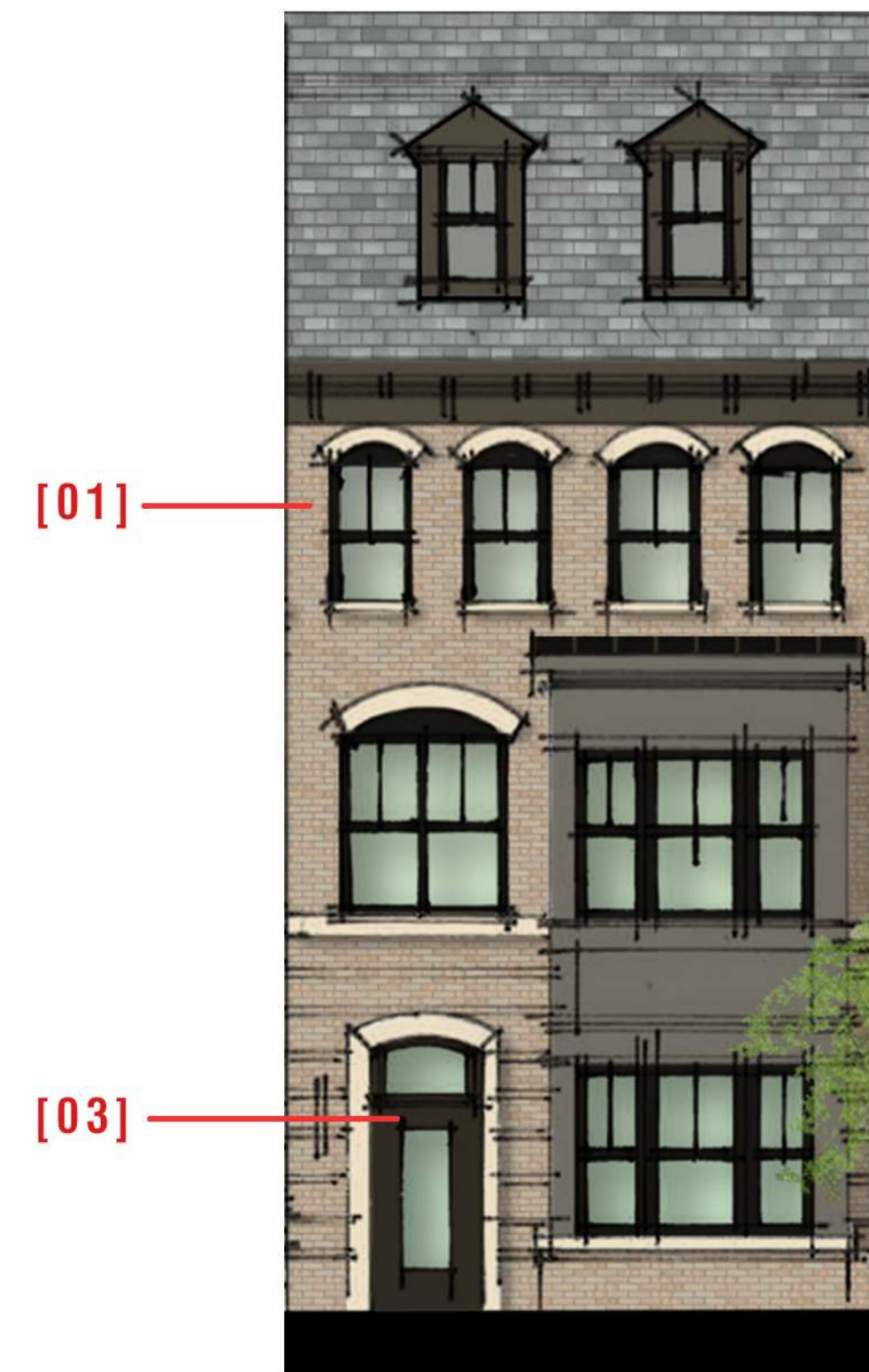
4. PLYGEM 2100 SERIES
-BRONZE



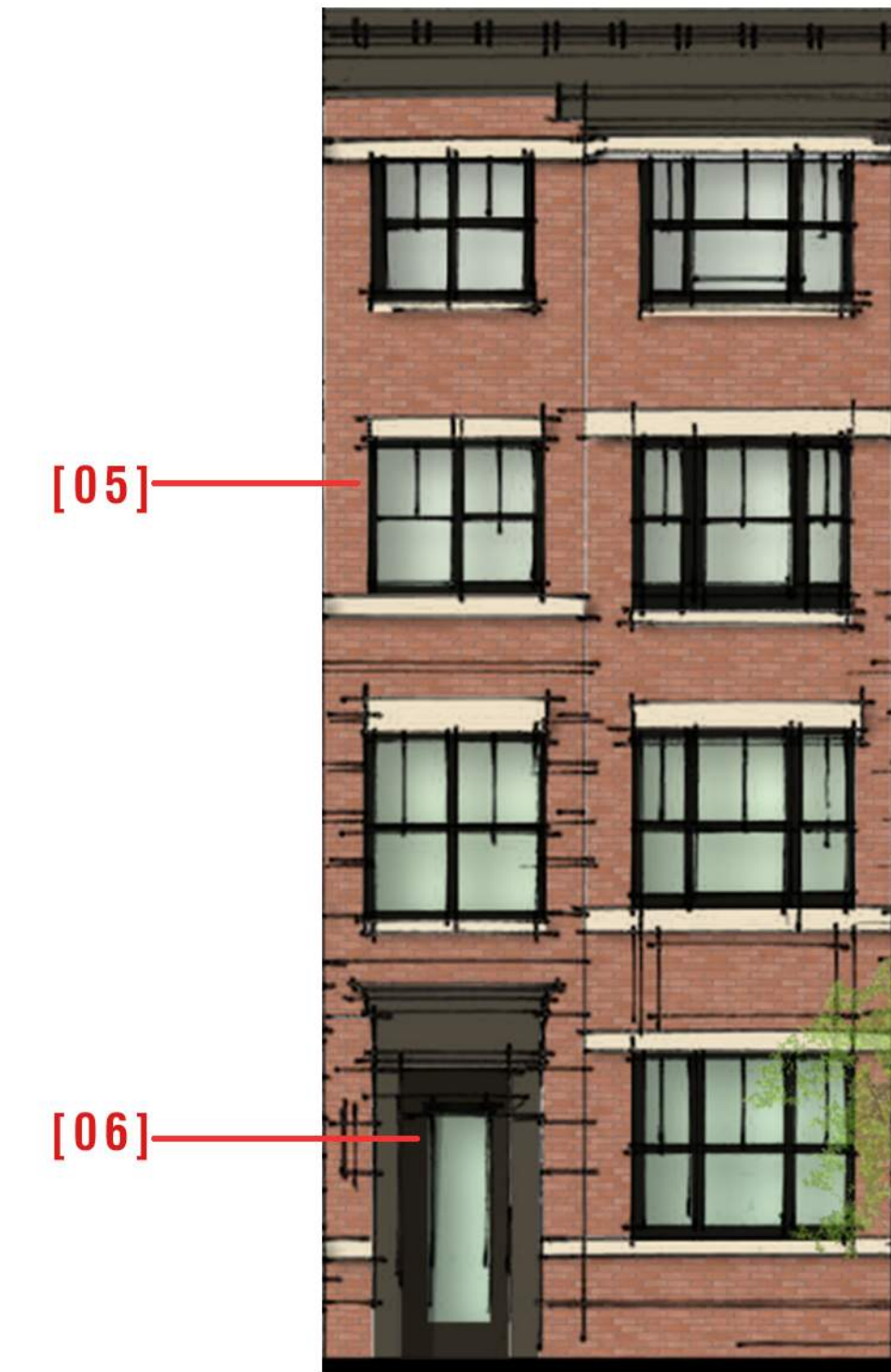
6



SCHEME #1

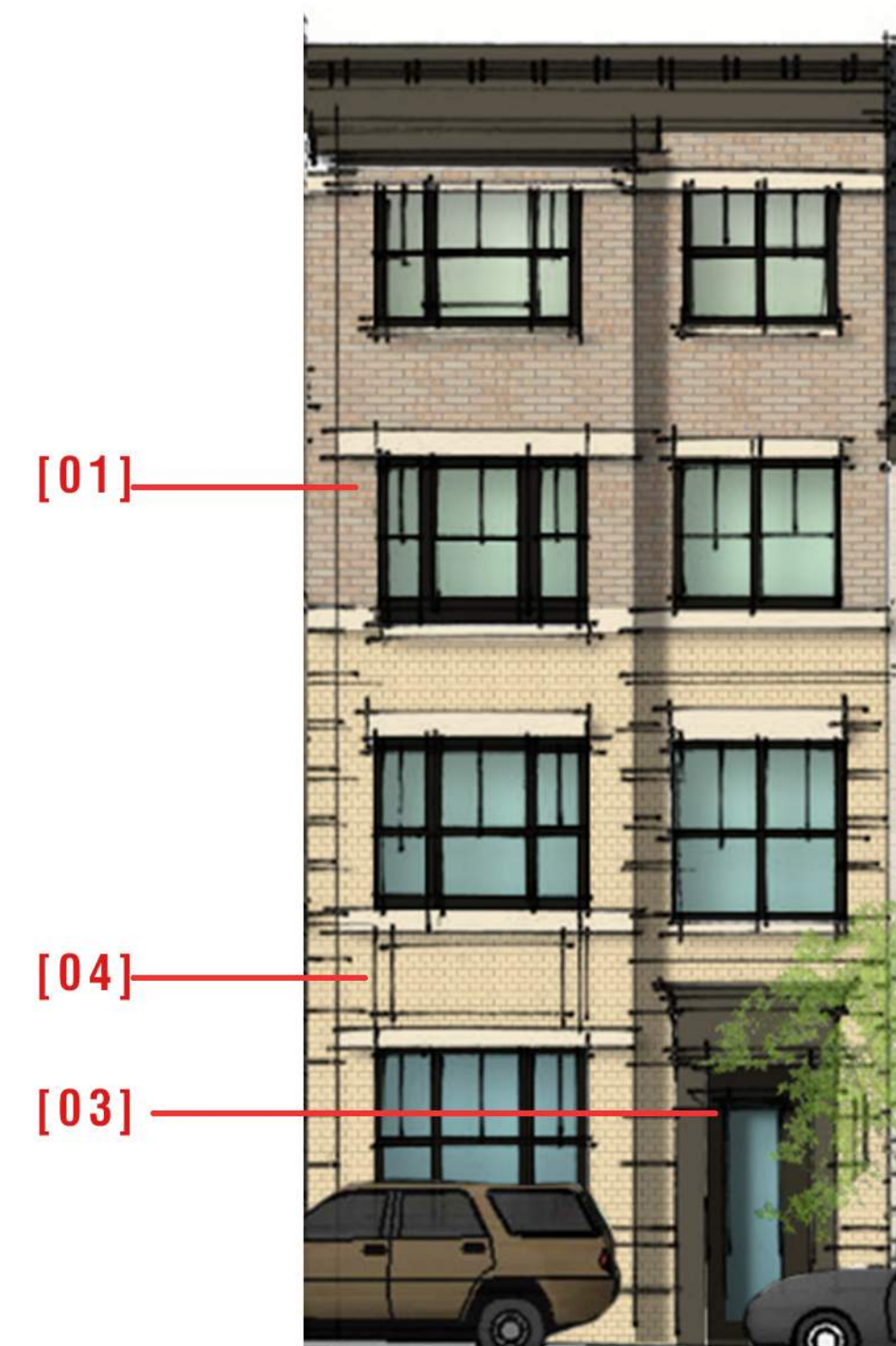


SCHEME #1



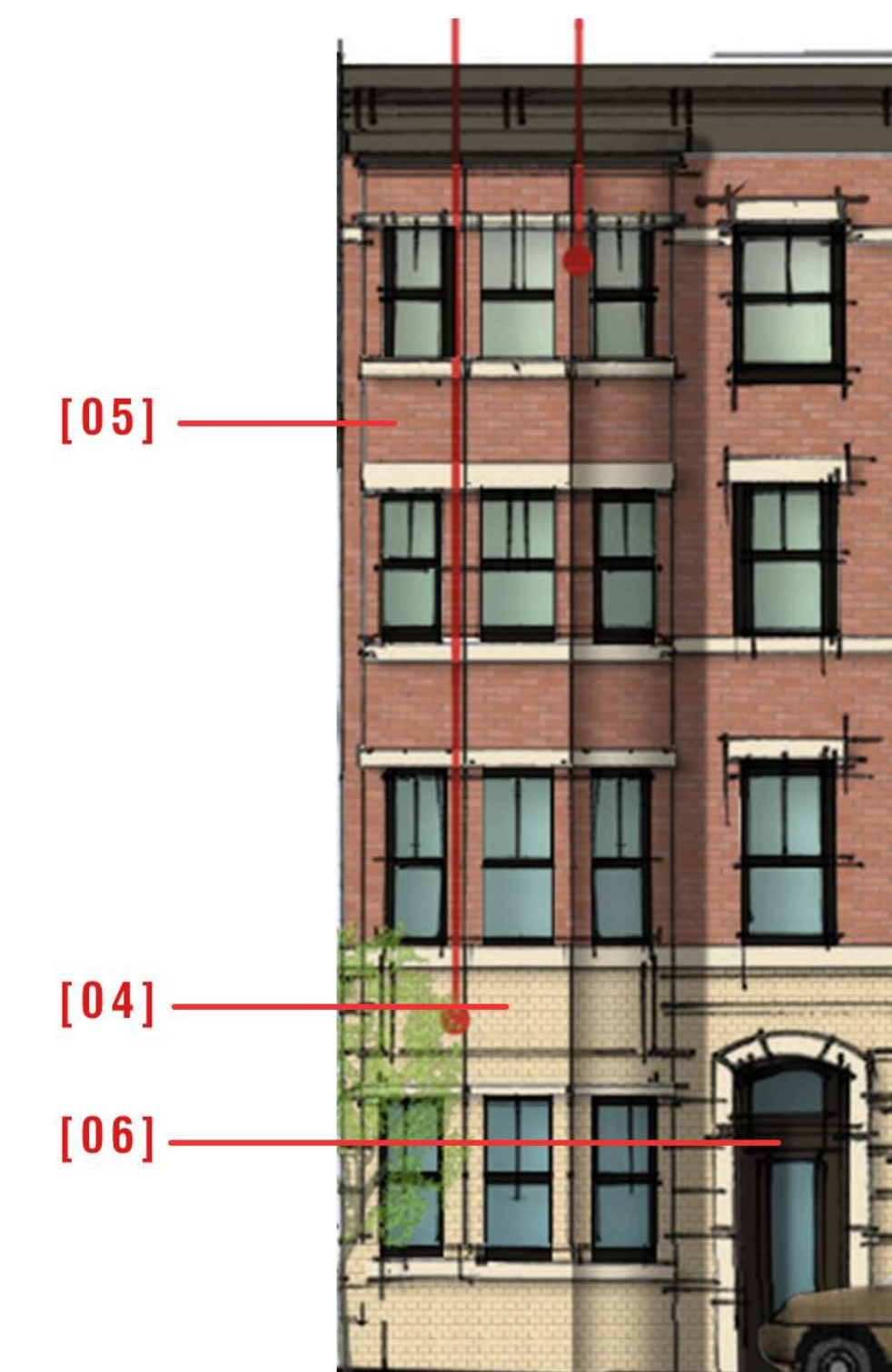
SCHEME #2

SCHEME #2



SCHEME #1B

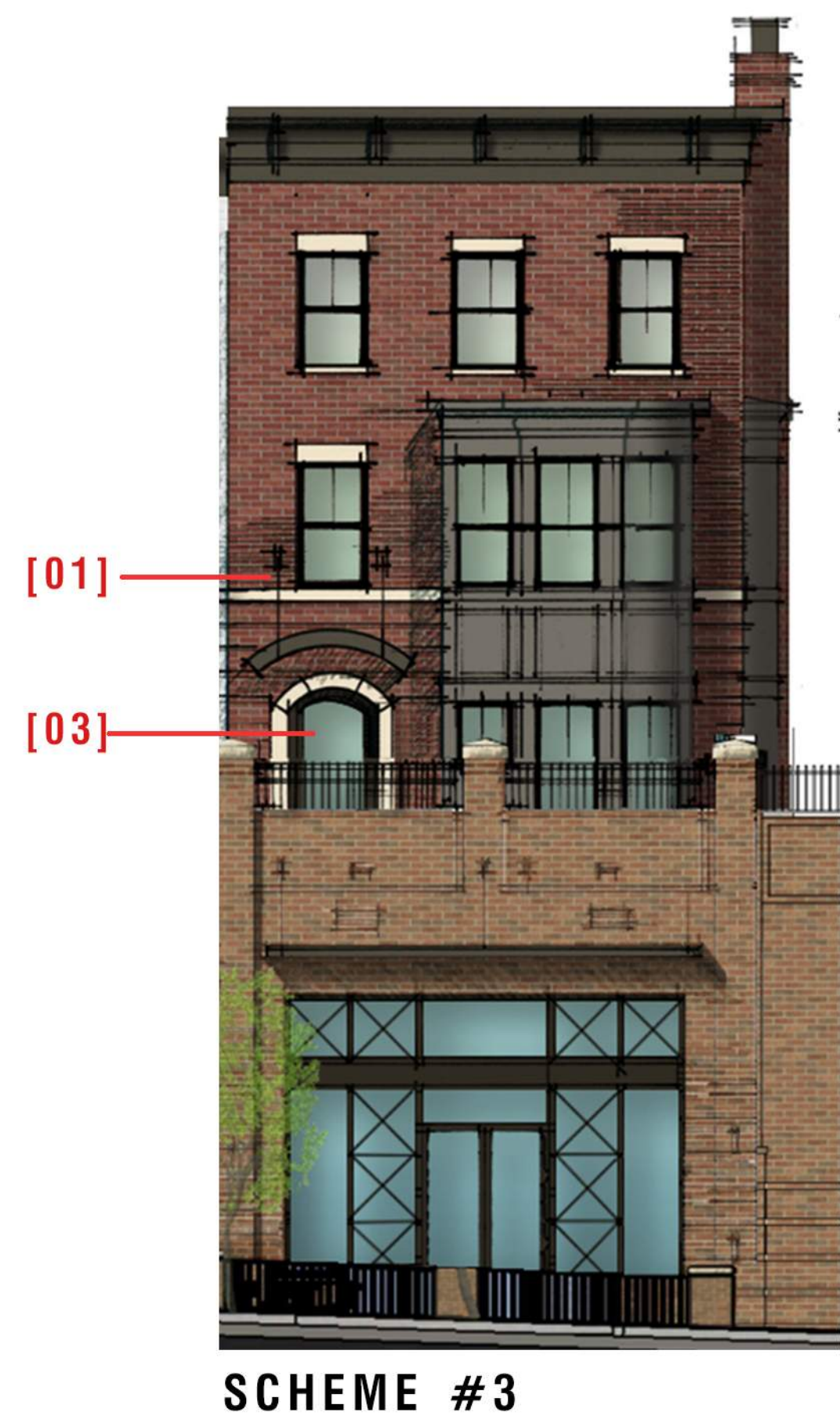
SCHEME #1B (BASE BRICK)



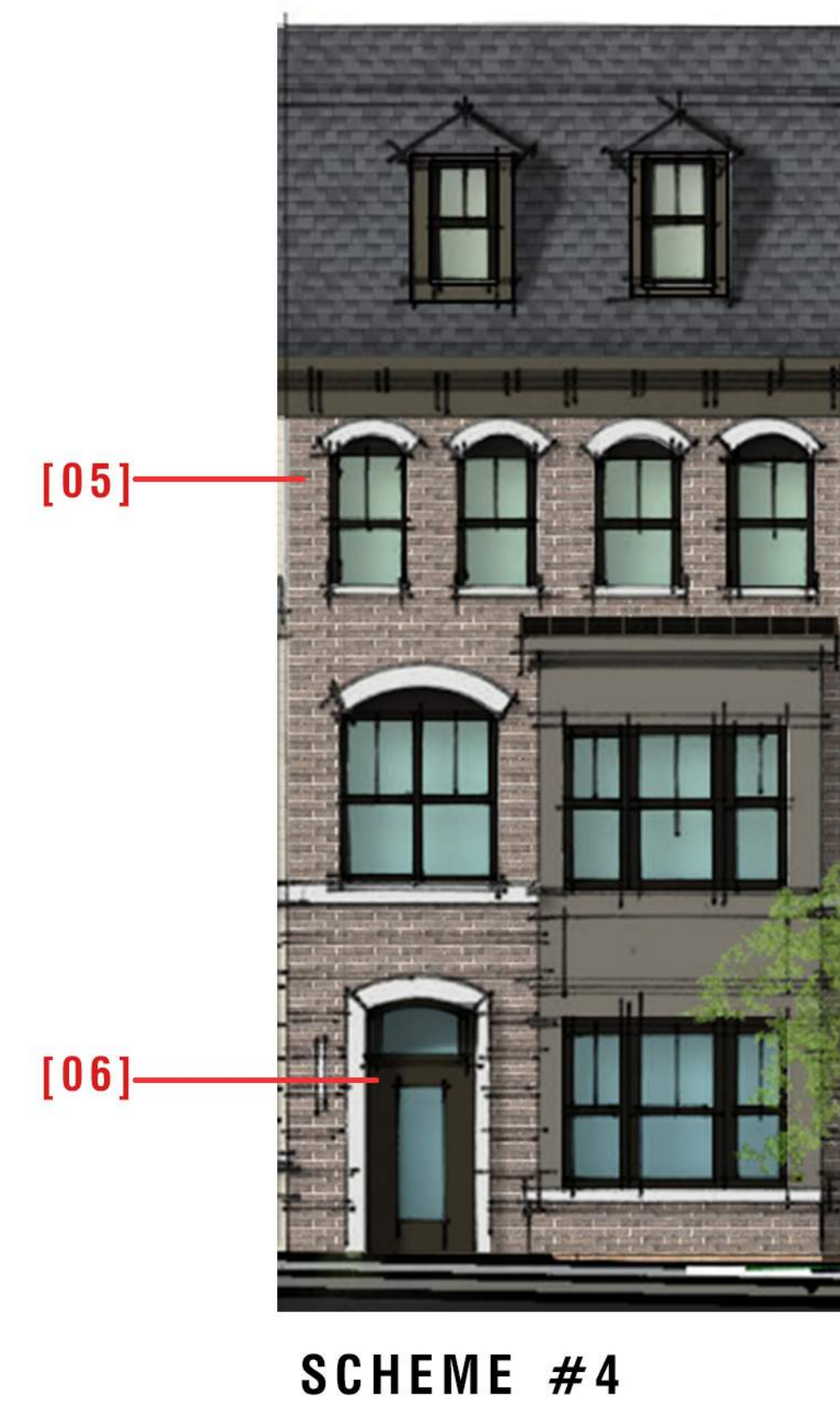
SCHEME #2B

SCHEME #2B (BASE BRICK)

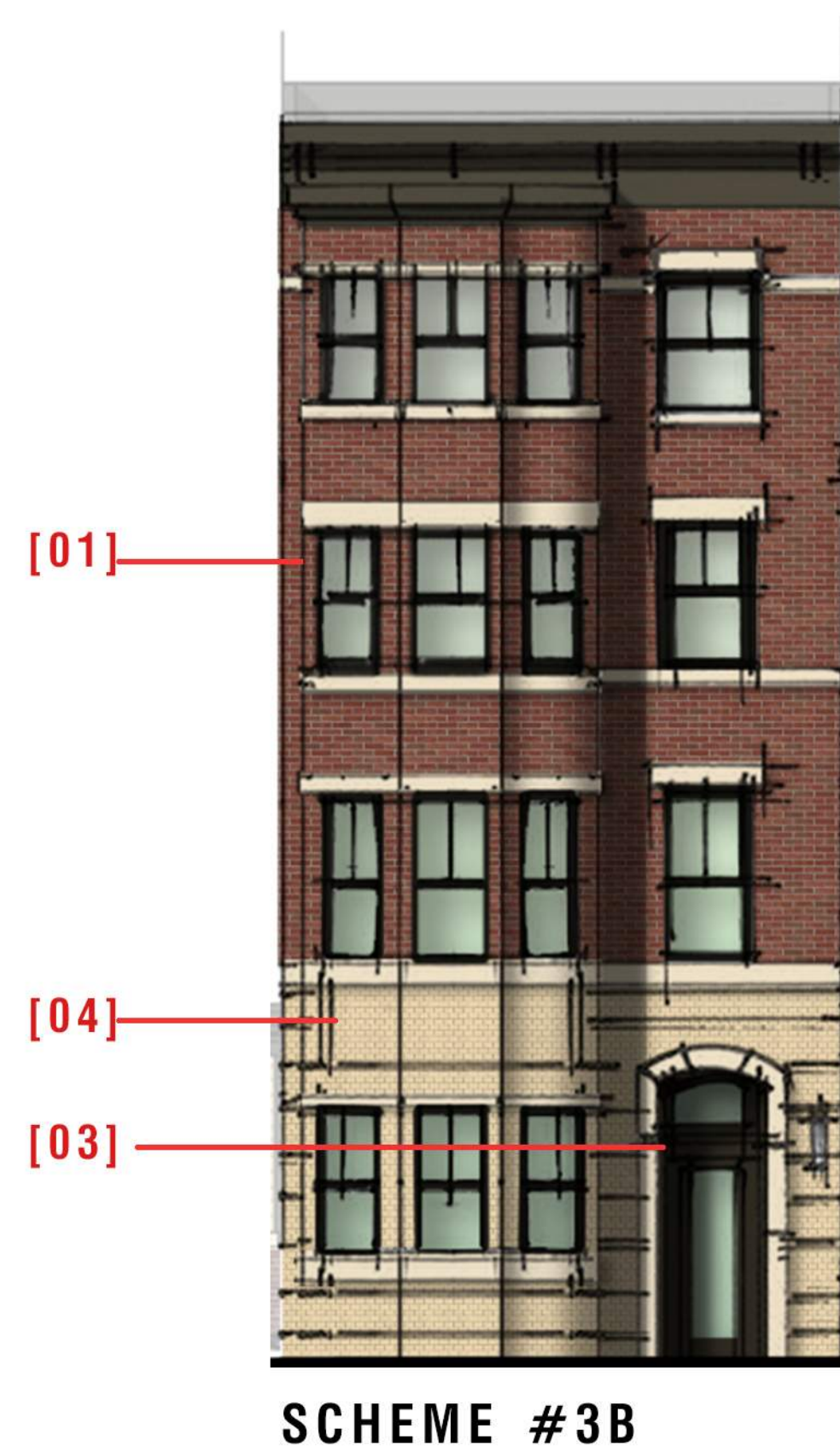




SCHEME #3



SCHEME #4



SCHEME #3B (BASE BRICK)



SCHEME #5



SCHEME #5



SCHEME #6

SCHEME #6

