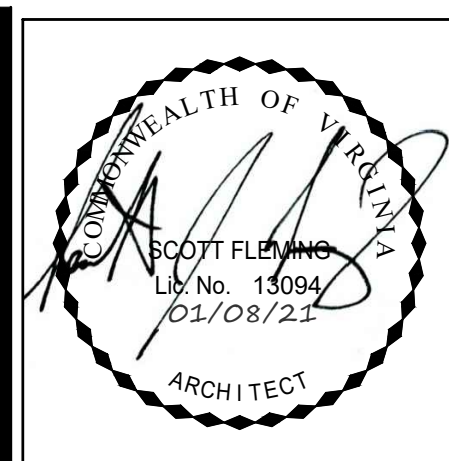
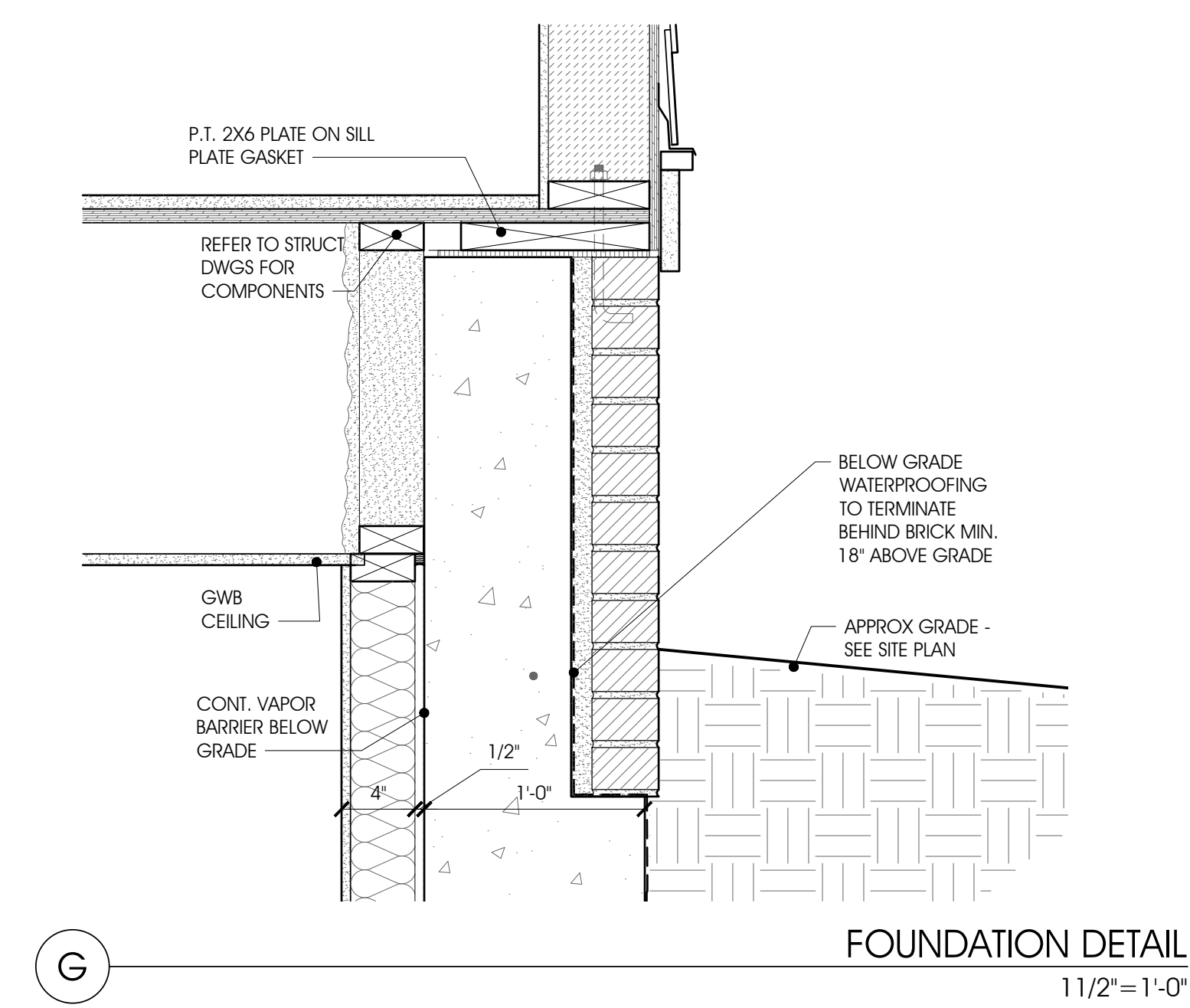
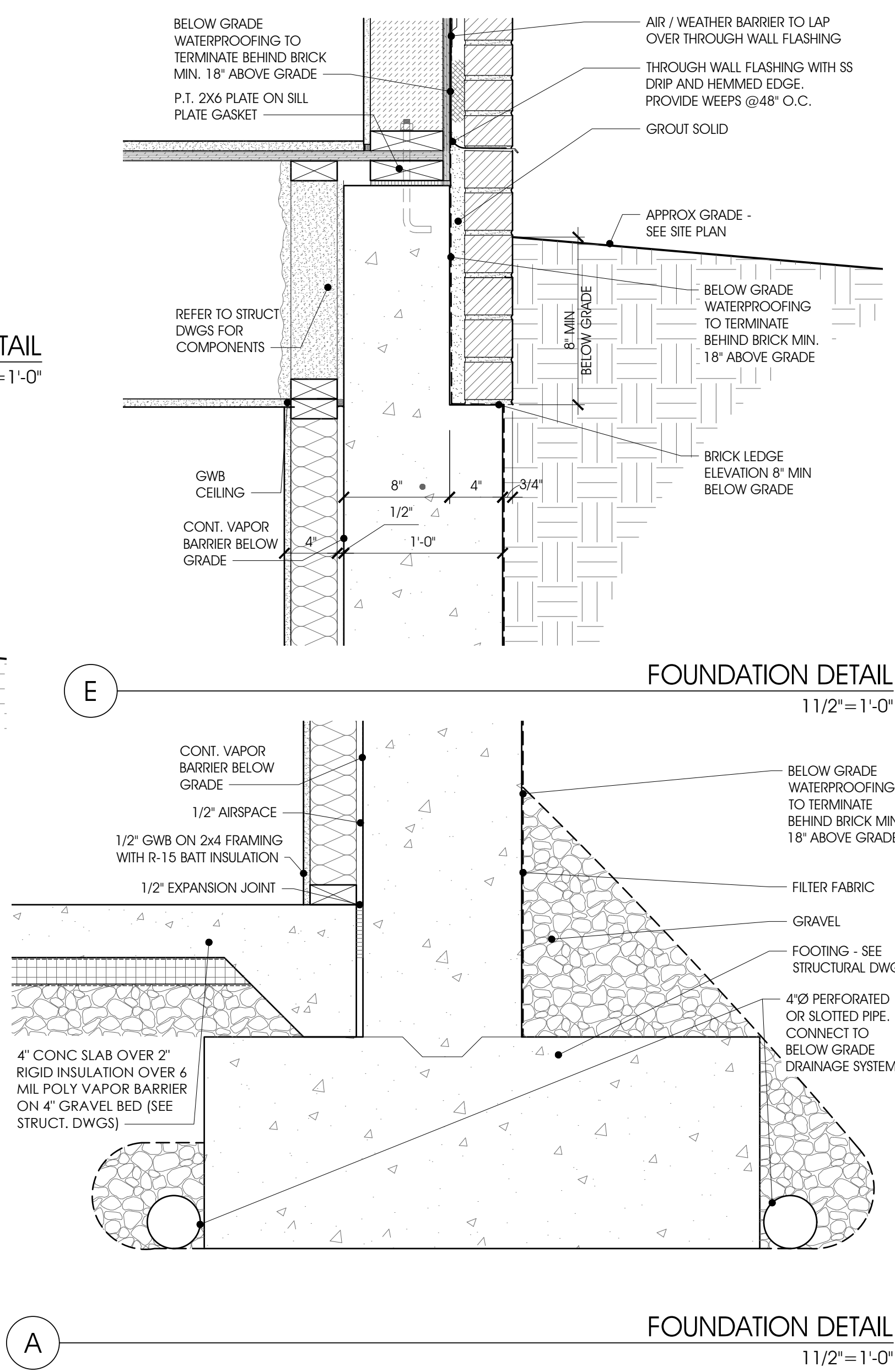
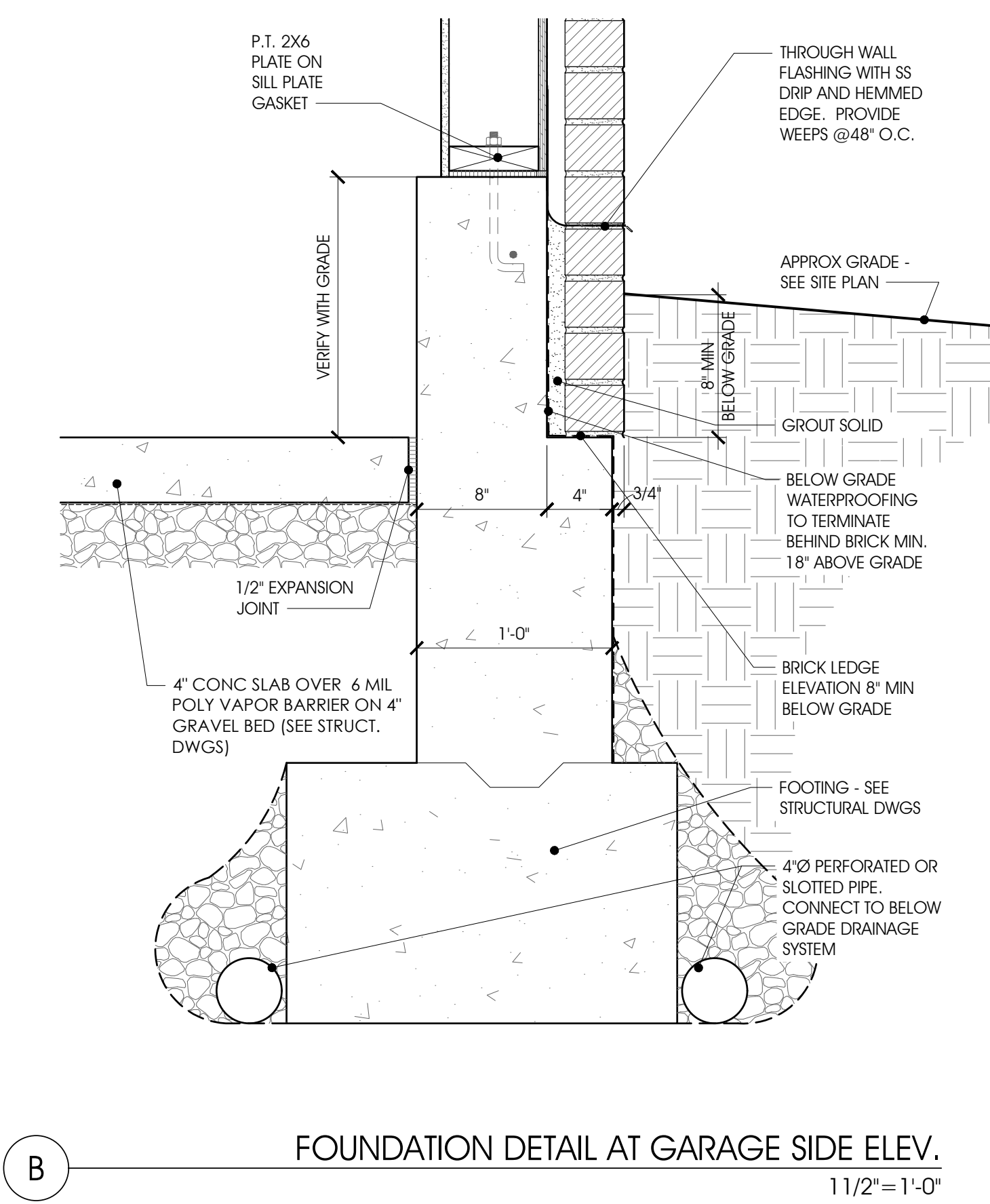
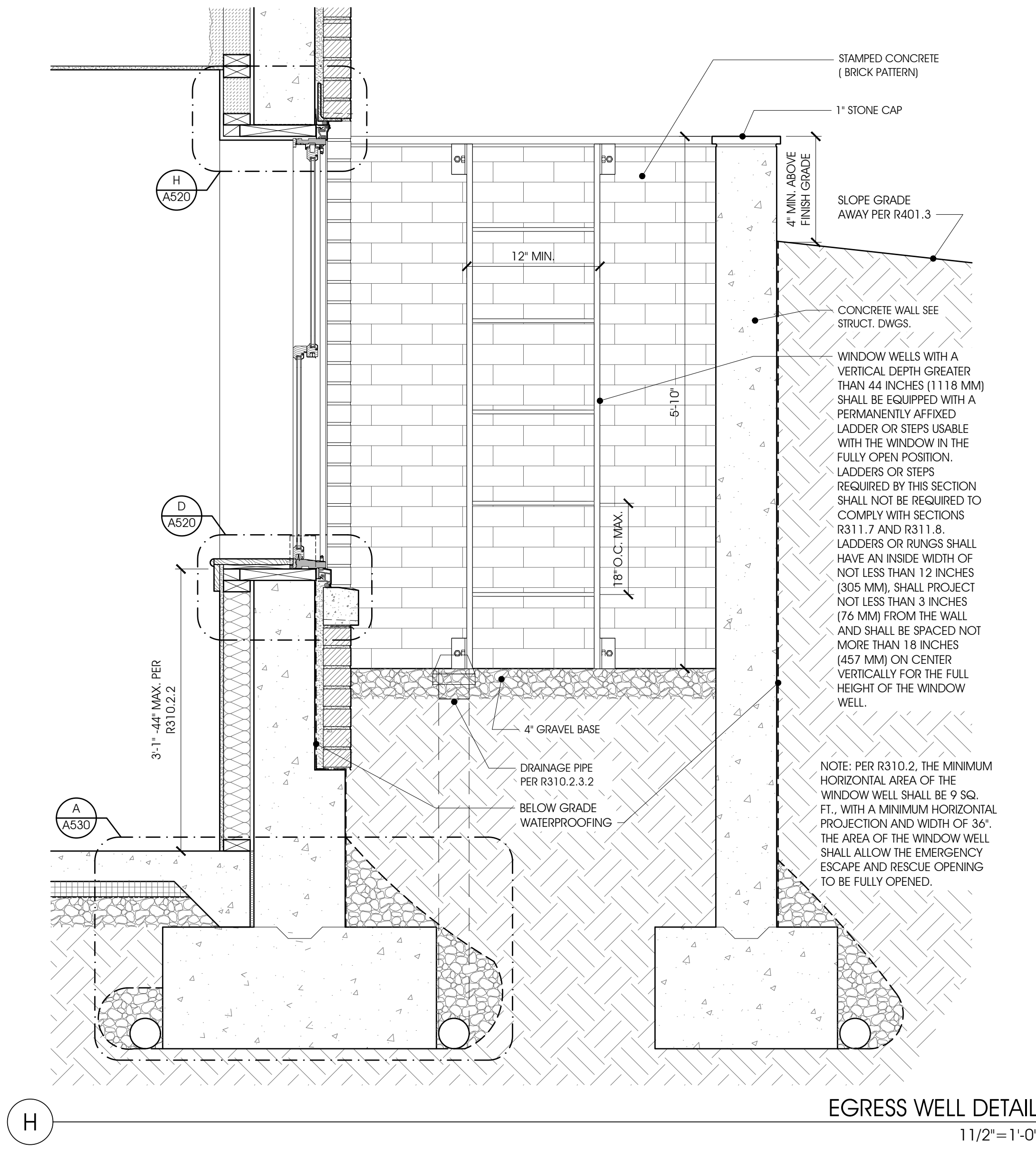
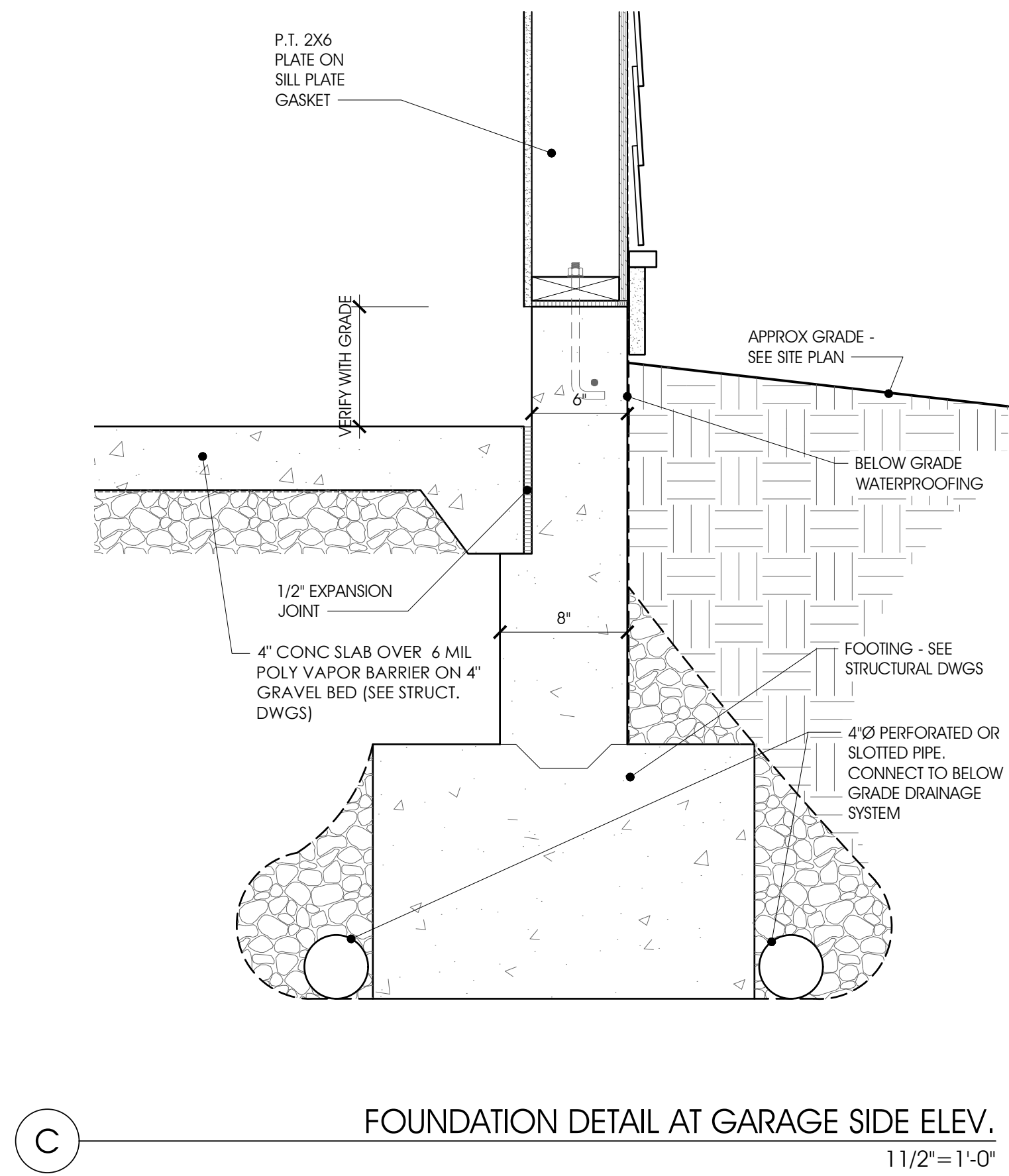
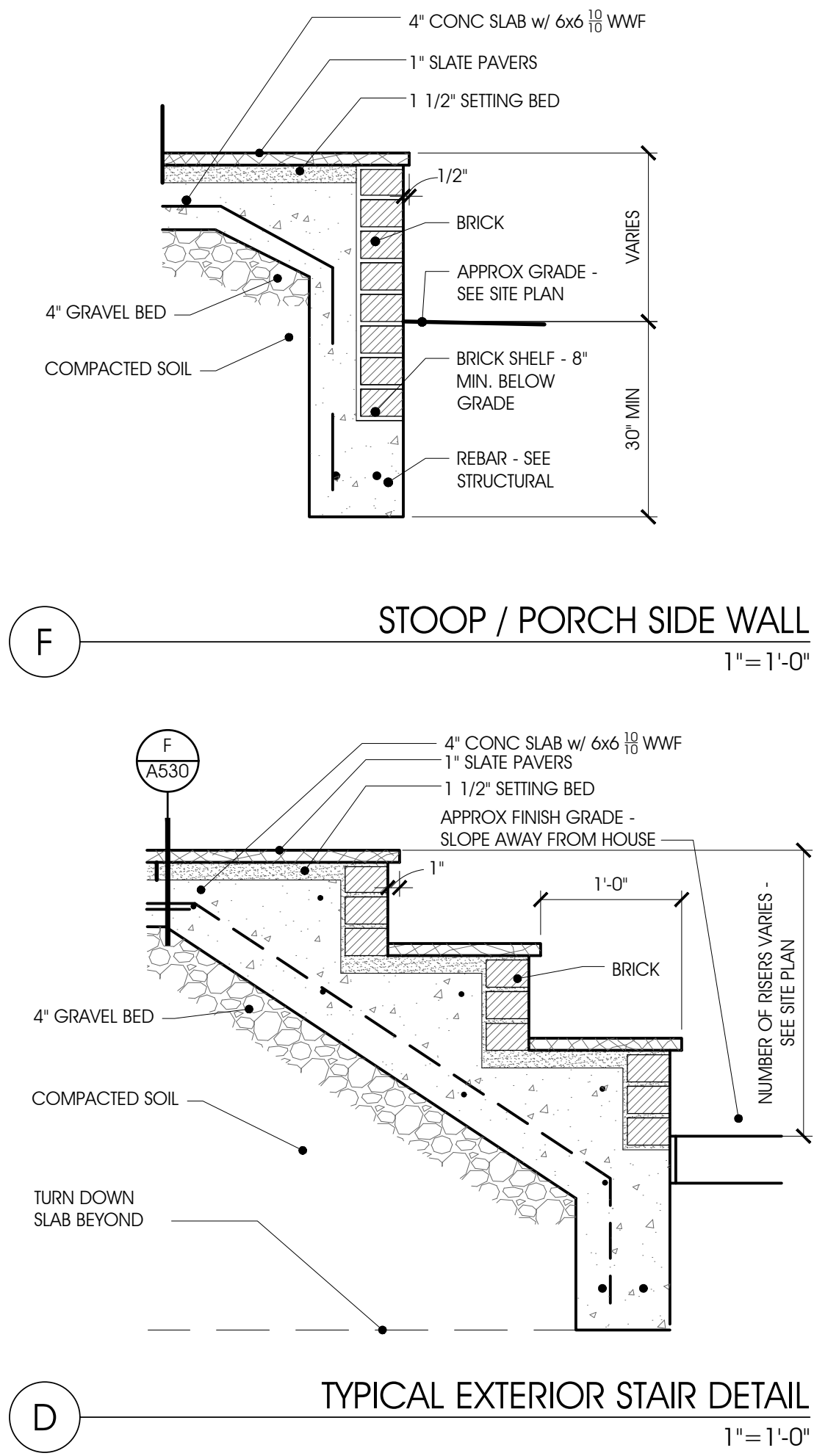


D:\160402\160402\DWG\160402\0001 & Cadence of Park\DWG\160402\A530\_A531\_Misc\_Detail.dwg / 1/10/2021 5:04:07 PM / rsmo@rustorling.com Copyright Rust | Orling Architecture



**RUST | ORLING**  
ARCHITECTURE  
1215 CAMERON STREET  
ALEXANDRIA, VA 22314  
T - 703.836.3205  
F - 703.548.4779  
admin@rustorling.com  
www.rustorling.com

# CADENCE AT PARK

VIENNA, VIRGINIA

20.014

REVISIONS	
DATE	DESCRIPTION

FOR PERMIT  
01.08.21

MISCELLANEOUS  
EXTERIOR DETAILS

SHEET NO.  
**A530**