

RUST | ORLING
ARCHITECTURE

1215 CAMERON STREET
ALEXANDRIA, VA 22314
T - 703.836.3205
F - 703.548.4779
admin@rustorling.com
www.rustorling.com



Field & Tung
Structural Engineers
1210 18th Street NW
Third Floor
Washington, DC 20036
202.760.2270

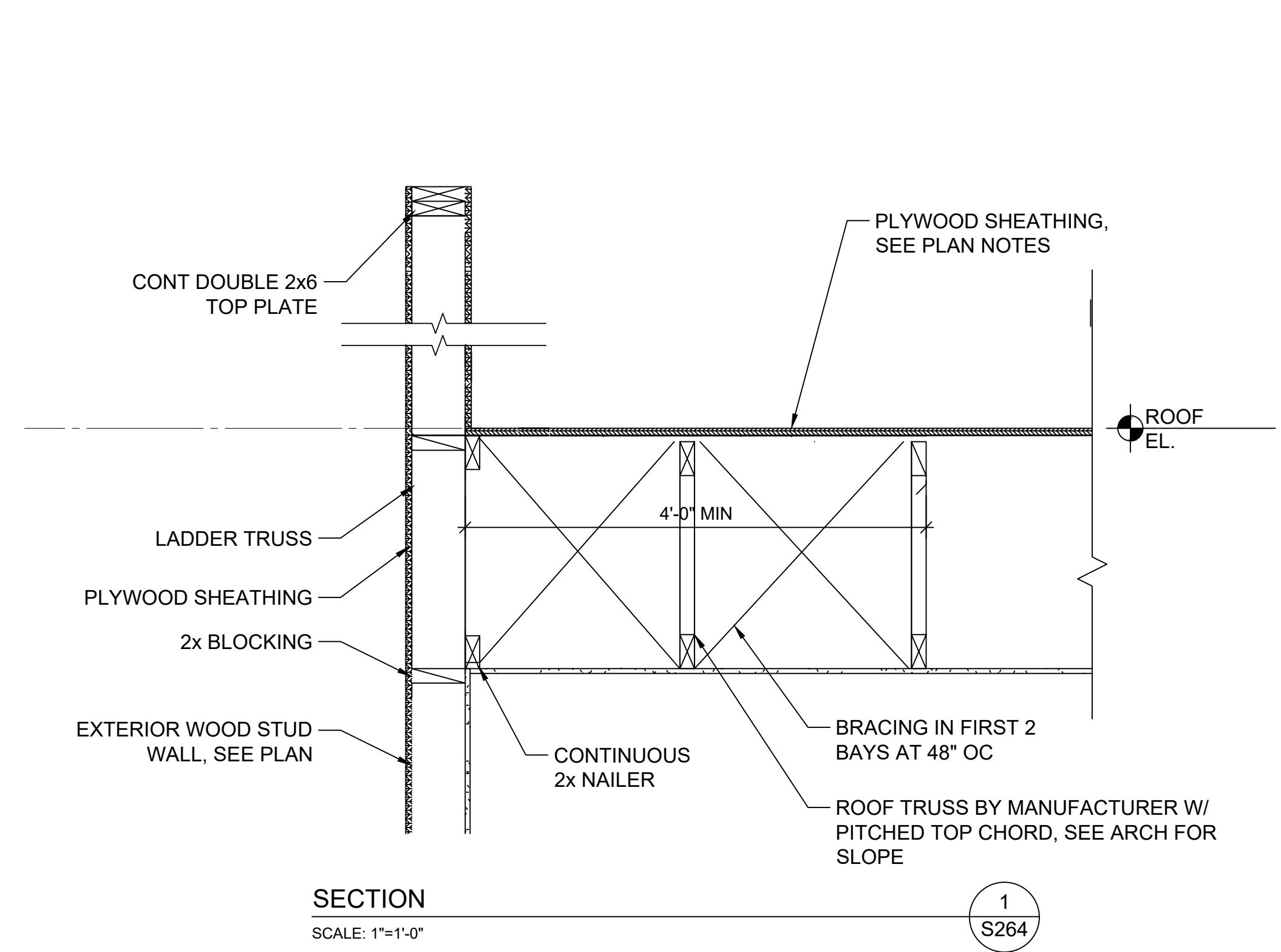
CADENCE AT PARK
VIENNA, VIRGINIA
20.014

REVISIONS	
DATE	DESCRIPTION
02.08.21	PERMIT REVISION #1

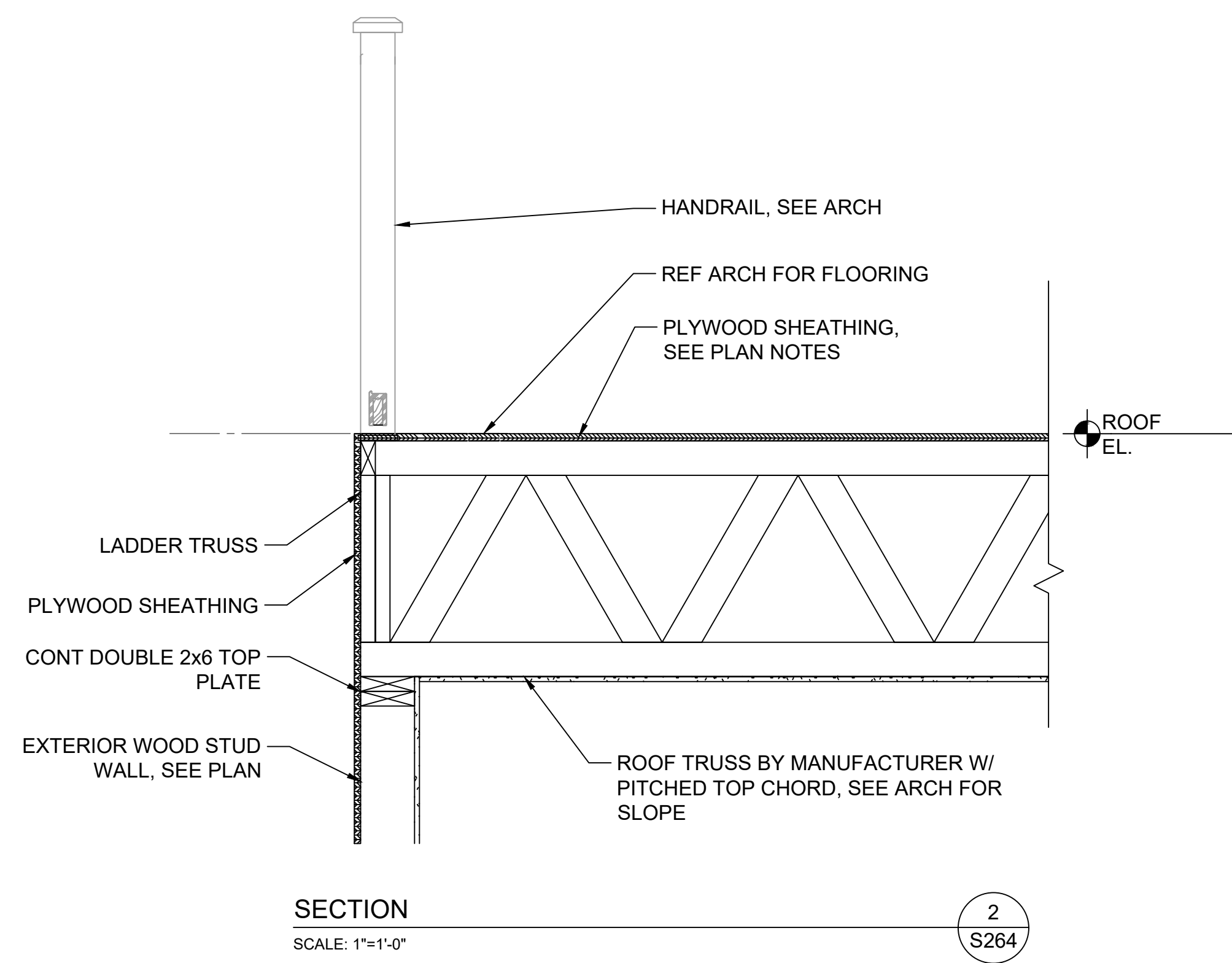
FOR PERMIT
01.21.21

SECTIONS AND
DETAILS

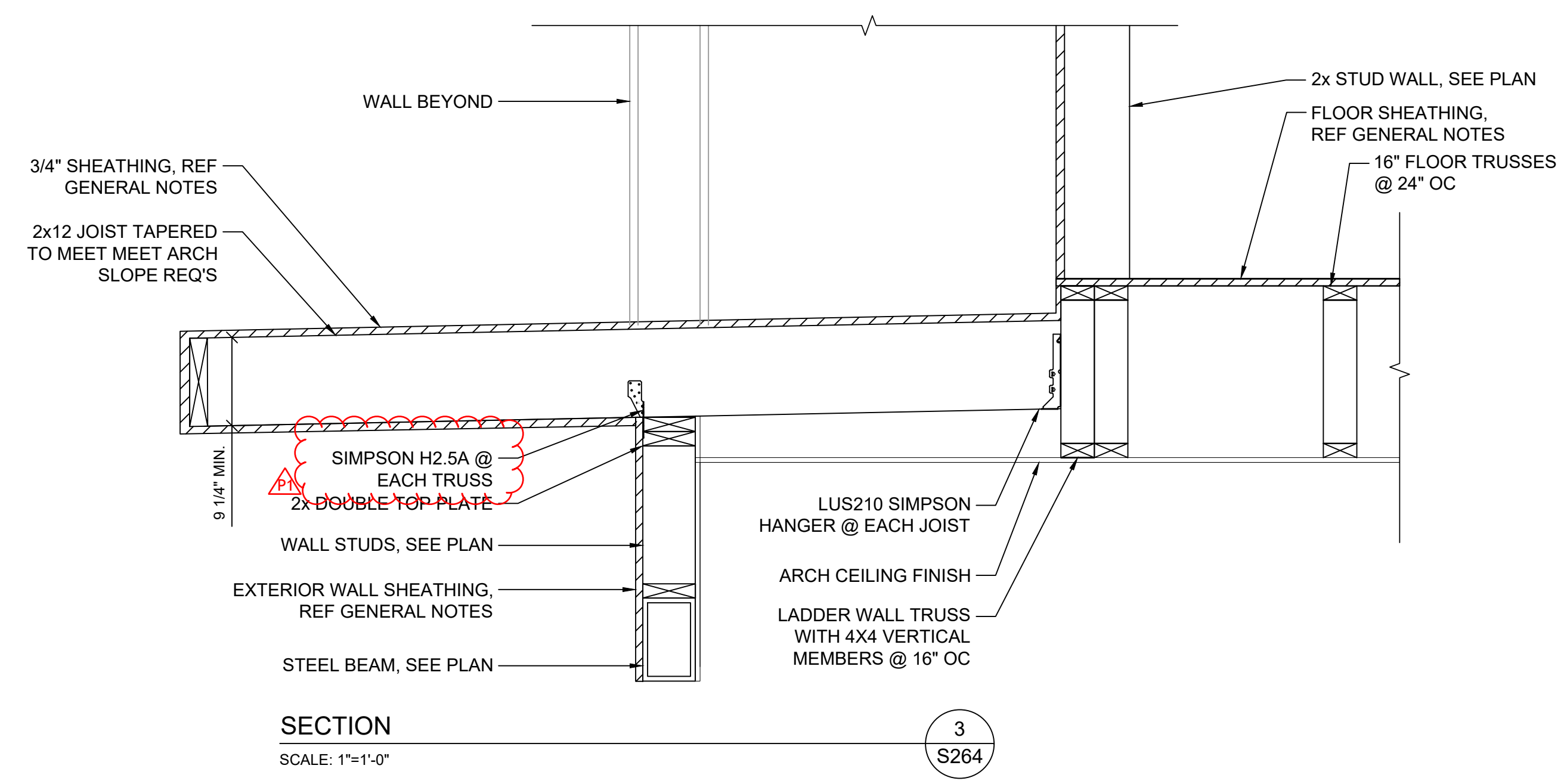
SHEET NO.
S264



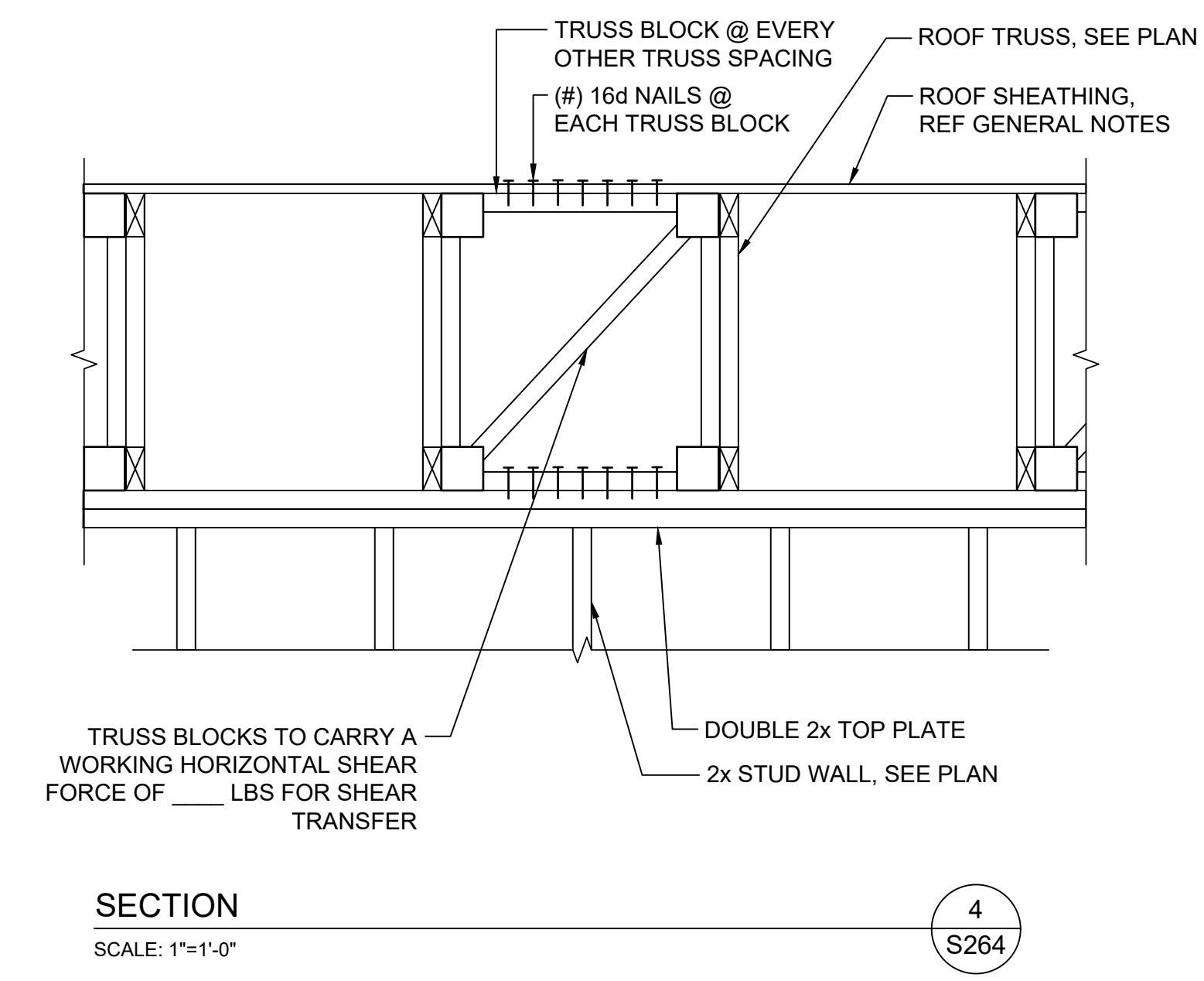
SECTION 1
SCALE: 1"=1'-0"
S264



SECTION 2
SCALE: 1"=1'-0"
S264



SECTION 3
SCALE: 1"=1'-0"
S264



SECTION 4
SCALE: 1"=1'-0"
S264