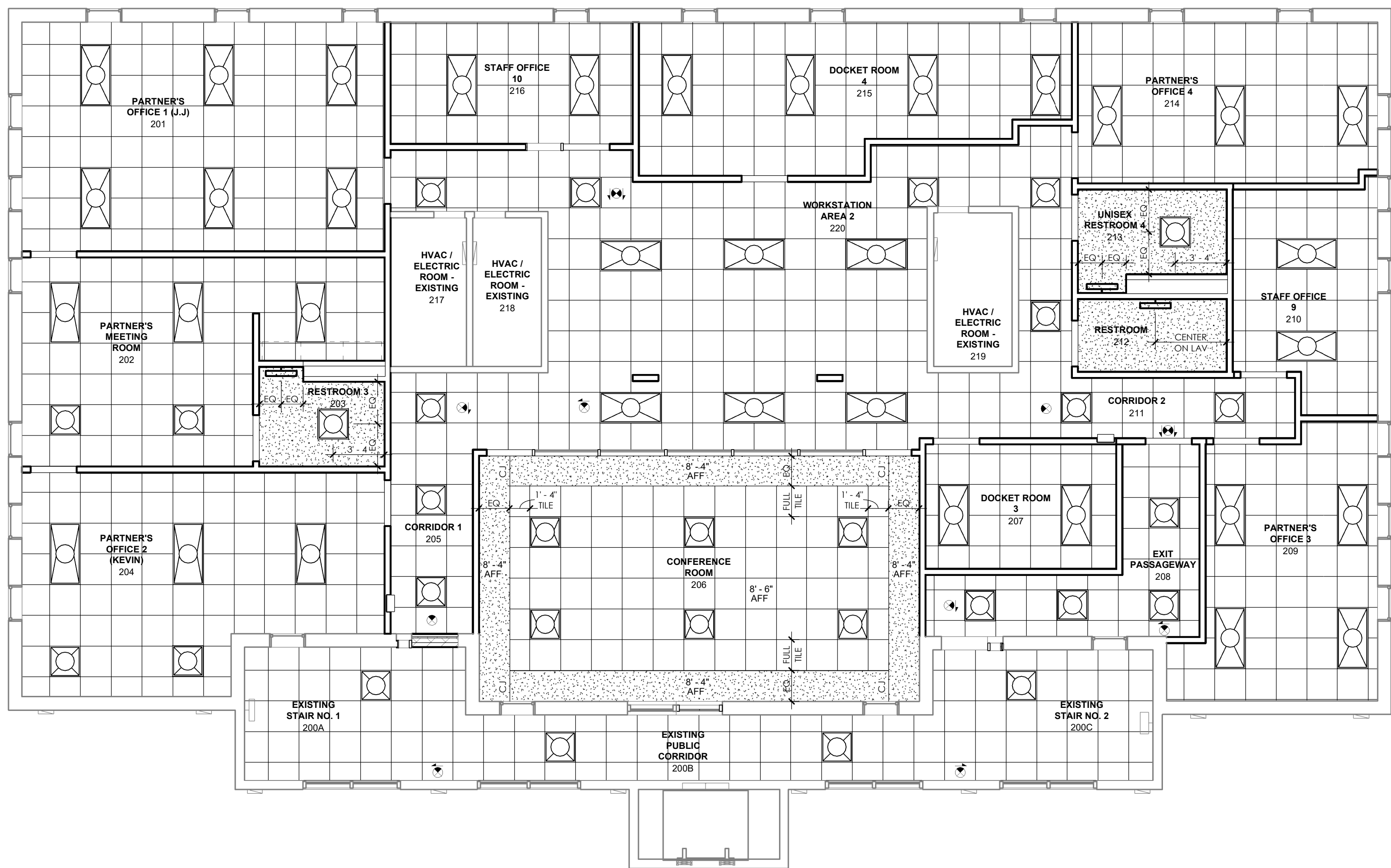


GENERAL NOTES - REFLECTED CEILING PLAN

- | | | | |
|---|-------------------|---|---|
|  | GYP 8D CEILING |  | EXIT SIGNS - HATCH INDICATES EXIT TEXT AND ARROW INDICATES DIRECTION |
|  | SUPPLY DIFFUSER |  | |
|  | RETURN AIR |  | PENDANT LIGHT FIXTURE |
|  | EXHAUST AIR |  | WALL MOUNTED LIGHT FIXTURE (SCONCE) |
|  | ACCESS PANEL |  | WALL MOUNTED LINEAR LIGHT FIXTURE (SCONCE) |
|  | 2X2 TROFFER LIGHT |  | DOWNLIGHT |
|  | 2X4 TROFFER LIGHT | | |
|  | 1X4 TROFFER LIGHT | | |
|  | CONTROL JOINT | | |

1. ALL FIRST FLOOR CEILINGS SHALL BE 9' - 0" ABOVE FINISHED FLOOR AND SECOND FLOOR CEILINGS SHALL BE 8' - 0" ABOVE FINISHED FLOOR, UNLESS NOTED OTHERWISE.
2. IN THE CASE OF MINOR DISCREPANCIES BETWEEN MEP AND ARCHITECTURAL DRAWINGS IN THE LOCATION OF CEILING MOUNTED COMPONENTS, THE ARCHITECTURAL REFLECTED CEILING PLAN SHALL GOVERN. IN THE CASE OF MAJOR DISCREPANCIES, THE ARCHITECT SHALL BE NOTIFIED AS SOON AS THE DISCREPANCY IS DISCOVERED PRIOR TO PROCEEDING WITH THE WORK.
3. LIGHTS, DIFFUSERS, EXIT SIGNS, SMOKE DETECTORS, SPEAKERS, STROBES AND MISCELLANEOUS DEVICES SHALL BE CENTERED IN THE CEILING TIE IN WHICH THEY OCCUR.
4. REFERENCE MECHANICAL AND ELECTRICAL DRAWINGS FOR MOUNTING LOCATIONS OF ITEMS WHERE NO CEILING IS REQUIRED OF INDICATED.
5. REFERENCE A3.3 FOR CONTROL JOINT DETAILS.


$$3/16'' = 1'-0''$$

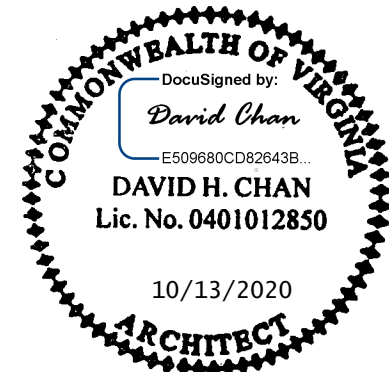
IP& T Group at
100 Maple Avenue East
Vienna, VA 22182

CLIENT:
IP&T Group, LLP

8230 Leesburg Pike, Suite 650
Vienna, VA 22182

[illegible]

KEY PLAN



SECOND FLOOR REFLECTED CEILING PLAN

A2.4



TRUE
NORTH

PLAN
NORTH