



Architecture + Planning
8609 Westwood Center Dr
Suite 600
Tysons, VA 22182
ktgy.com
703.992.6116

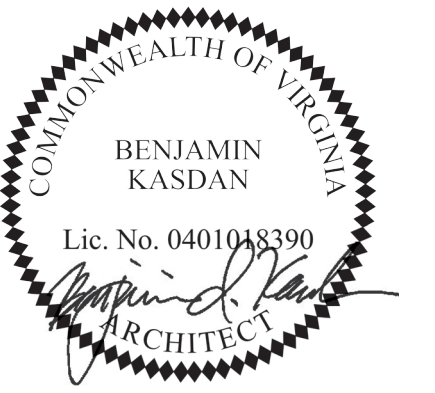
KTGY Project No: #2019-0073

Developer



Hekemian & Co, Inc.
505 Main St, Suite 400

Hackensack, NJ 07602
PHONE NO. 201.487.1500
FAX NO. 201.487.7881



444 MAPLE AVENUE
VIENNA, VIRGINIA

No.	Date	Description

It is the clients responsibility prior to or during construction to notify the architect in writing of any perceived errors or omissions in the plans and specifications of which a contractor thorough knowledge with the building codes and methods of construction should reasonably be aware. Written instructions addressing such perceived errors or omissions shall be received from the architect prior to the client or clients subcontractors proceeding with the work. The client will be responsible for any defects in construction if these procedures are not followed.

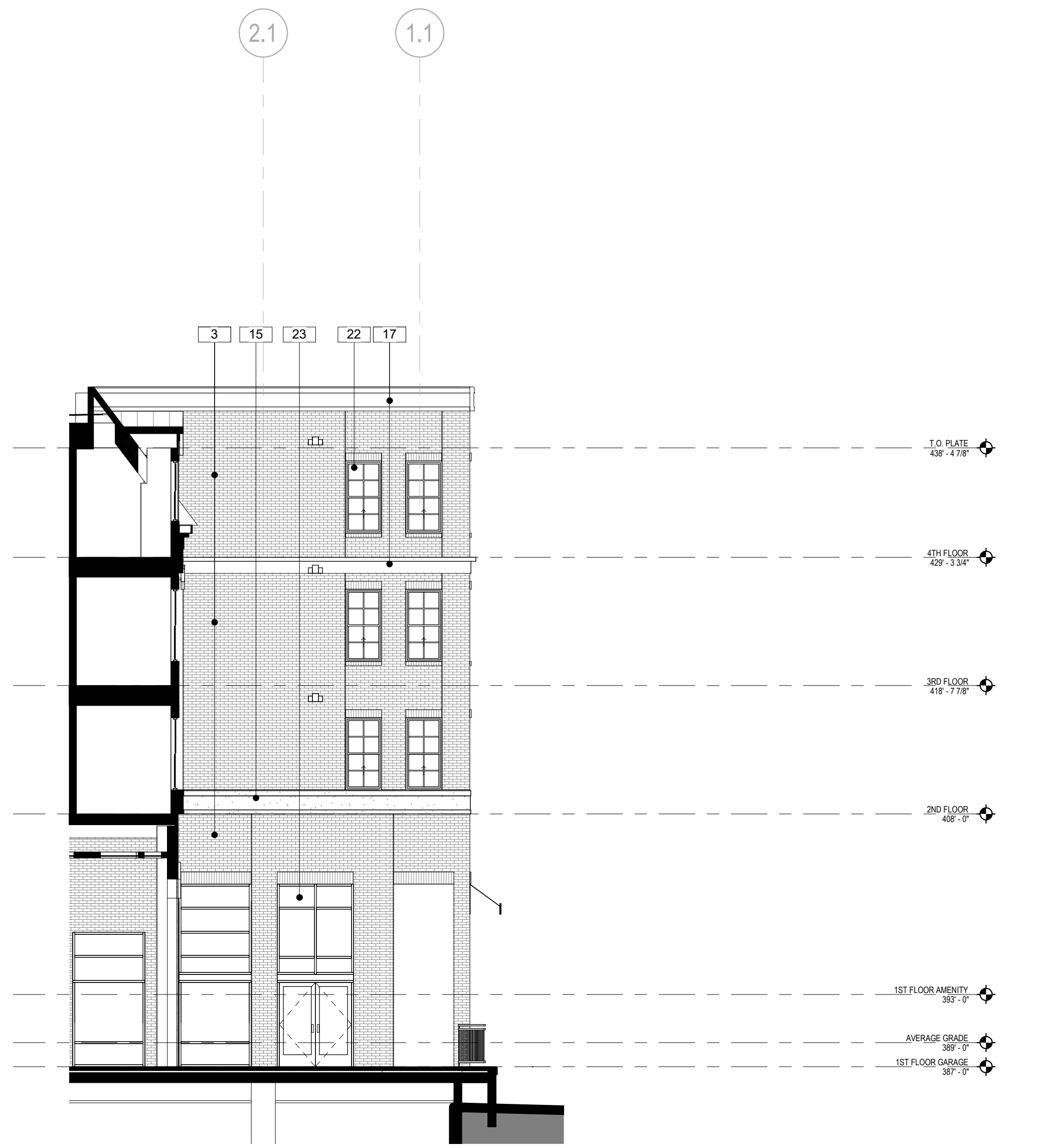
PERMIT SET

MAY 8, 2020

ENLARGED PARTIAL ELEVATIONS

A3-08

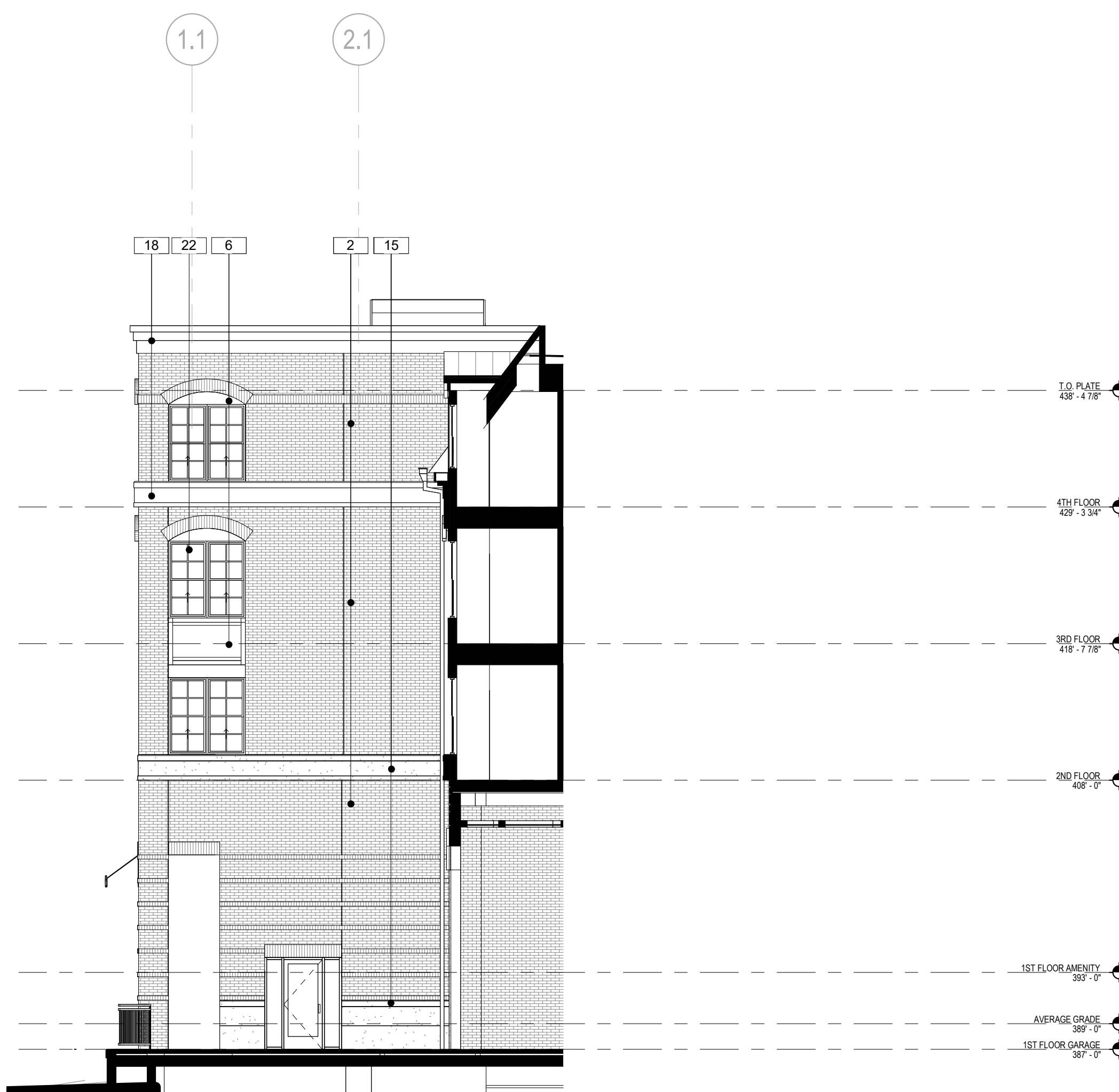
MATERIAL SCHEDULE	
MATERIAL #	MATERIAL
1	BRICK 1 - TAYLOR - #318 BURGUNDY WIRECUT
1T	THIN BRICK 1 - RED 1
2	BRICK 2 - TAYLOR - #317 MODULAR RED WIRECUT
2T	THIN BRICK 2 - RED 2
3	BRICK 3 - TAYLOR - #318 CREAM
3T	THIN BRICK 3 - CREAM
4	BRICK 4 - TAYLOR - FRENCH GRAY
5	FIBER CEMENT PANEL 1 - HARDIE - TIMBER BARK
6	FIBER CEMENT PANEL 2 - HARDIE - NAVAJO BEIGE
7	FIBER CEMENT PANEL 3 - HARDIE - MONTEREY TALPE
8	FIBER CEMENT PANEL 4 - HARDIE - ARCTIC WHITE
9	FIBER CEMENT SIDING 1 - HARDIE - TIMBER BARK
10	FIBER CEMENT SIDING 2 - HARDIE - NAVAJO BEIGE
11	STONE - EL DORADO - BRIDGEPORT LIMESTONE
12	STANDING SEAM METAL ROOF - PACCLAD - MUSKET GRAY
13	STANDING SEAM METAL ROOF - PACCLAD - ARCADIA GREEN
14	STANDING SEAM METAL ROOF - PACCLAD - COLONIAL RED
15	CAST STONE 1 - CONTINENTAL CAST STONE - DARK BUFF
16	CAST STONE 2 - CONTINENTAL CAST STONE - 1108 PEBBLE
17	FIBER CEMENT CORNICE - HARDIE - ARCTIC WHITE
18	FIBER CEMENT CORNICE - HARDIE - NAVAJO BEIGE
19	FIBER CEMENT CORNICE - HARDIE - MONTEREY TALPE
20	FIBER CEMENT CORNICE - HARDIE - TIMBER BARK
21	ALUMINUM RAILING
22	VINYL WINDOW
23	ALUMINUM STOREFRONT
24	FABRIC AWNING - GRAY
25	FABRIC AWNING - BLUE
26	FABRIC AWNING - GREEN
27	BLADE SIGN
28	STEEL CANOPY
29	EXHAUST VENT



PARTIAL NORTHWEST ELEVATION

SCALE:
1/8" = 1'-0"

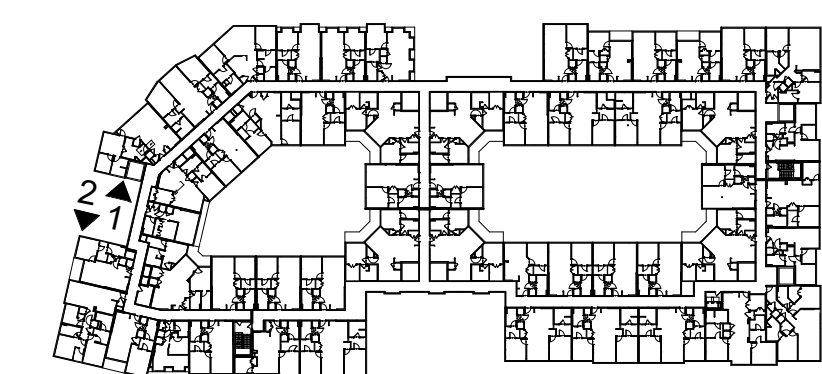
2



PARTIAL SOUTHWEST ELEVATION

SCALE:
1/8" = 1'-0"

1



KEY PLAN

