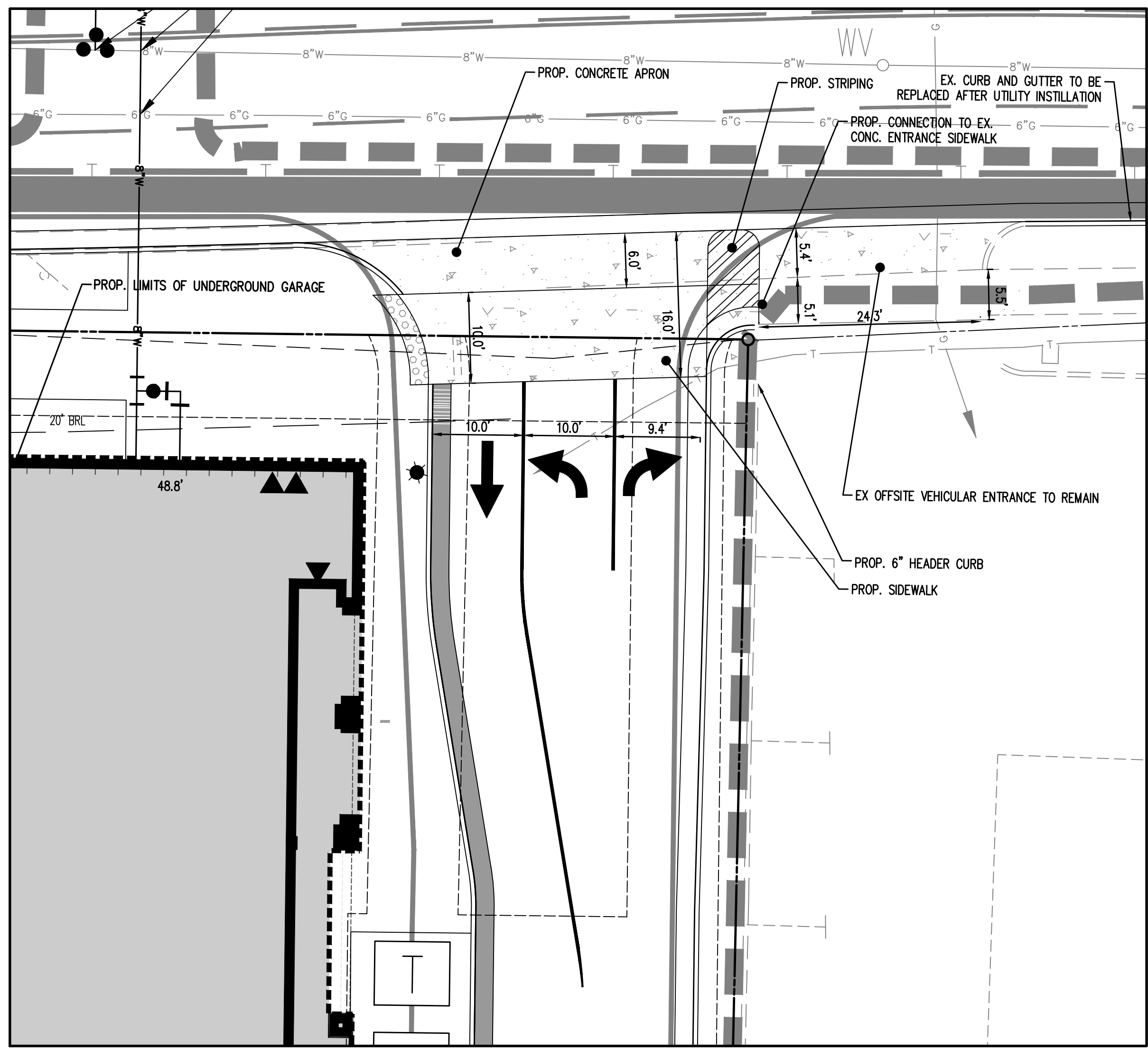
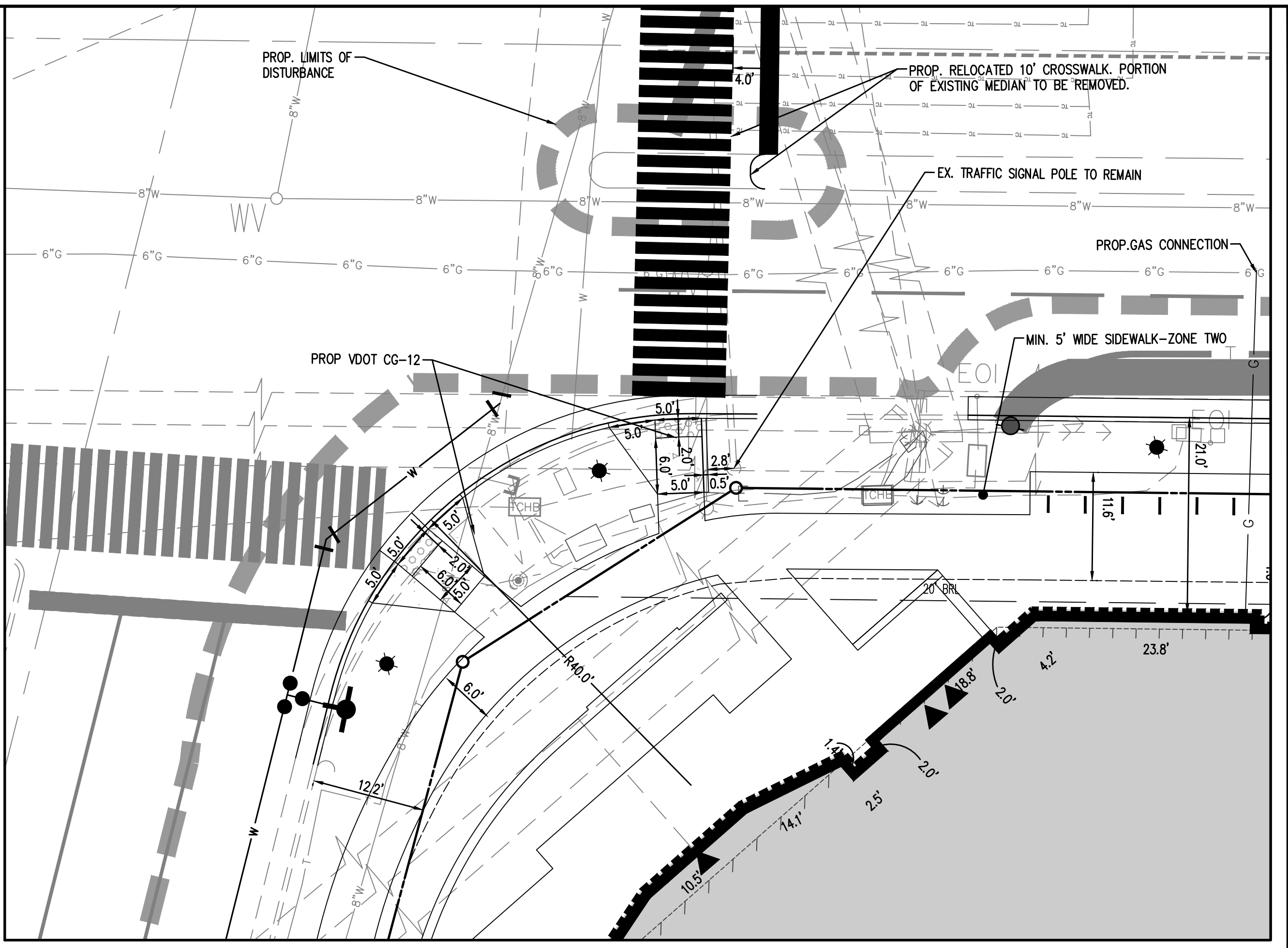


PROPOSED	DESCRIPTION	EXISTING
	CURB & GUTTER CG-2	
	TRANSITION FROM CG-6 TO CG-6R	
	SANITARY SEWER	
	SANITARY LATERAL	
	CLEAN OUT	
	STORM SEWER	
	WATER MAIN	
	FIRE HYDRANT	
	PLUG	
	OVERHEAD WIRES	
	UTILITY POLE	
	UNDERGROUND ELECTRIC	
	TELEPHONE	
	GAS MAIN	
	ELECTRICAL	
	TRANSFORMER	
	HANDICAP RAMP (CG-12)	
	GUARDRAIL	
	FENCE	
	TRAFFIC FLOW	
	LIGHT	
	DOOR	
	TREES	
	CONTOURS	
	SPOT ELEVATION	
	DRAINAGE FLOW DIRECTION	
	TOP OF CURB	
	BOTTOM OF CURB	
	TOP OF WALL	
	BOTTOM OF WALL	
	HIGH POINT	
	TEST PIT	
	LIMITS OF CLEARING AND GRADING	



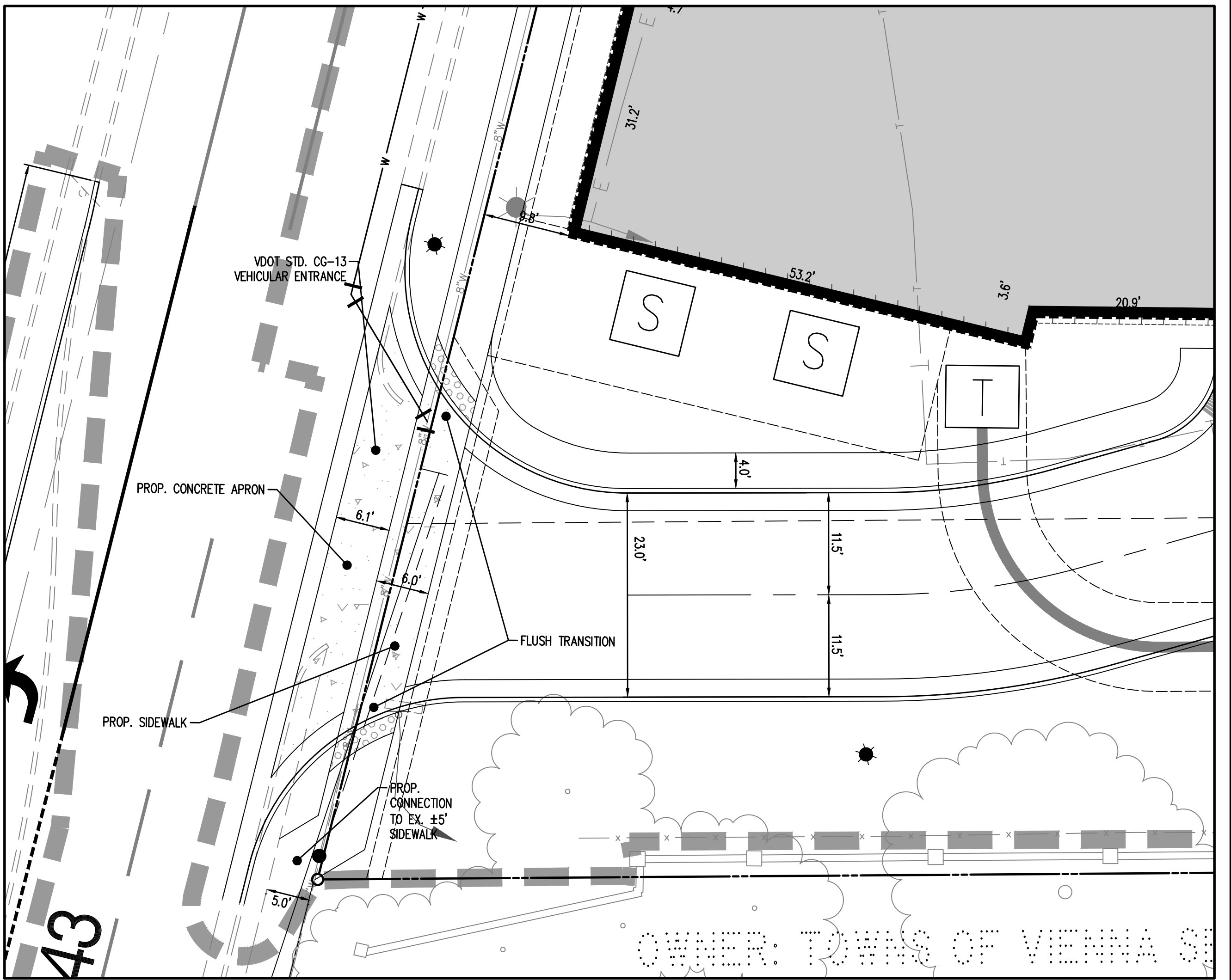
LAYOUT ENLARGEMENT C

SCALE: 1" = 10'



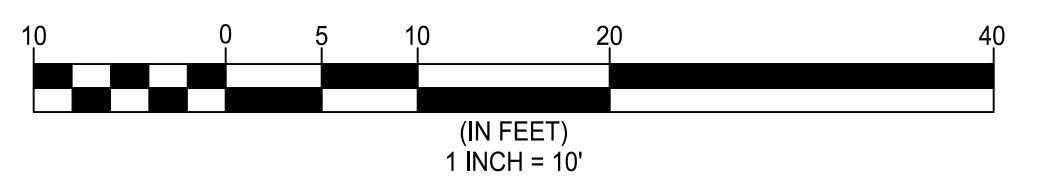
LAYOUT ENLARGEMENT A

SCALE: 1" = 10'



LAYOUT ENLARGEMENT B

SCALE: 1" = 10'



Engineers • Surveyors • Planners  
Landscape Architects • Arborists  
207 PARK AVENUE  
FALLS CHURCH, VIRGINIA 22046  
(703) 532-6163 Fax (703) 533-1301  
www.WLPINC.com

**WALTER L. PHILLIPS**  
INCORPORATED ESTABLISHED 1945  
DATE: SUB01: 01/12/2019; SUB02: 05/07/2020  
DRAWN: DL  
CHECKED: KW



NO.	DESCRIPTION	DATE	REV. BY	APPROVED	DATE

**LAYOUT ENLARGEMENTS**  
**444 MAPLE AVENUE WEST**  
SITE PLAN  
TOWN OF VIENNA, VIRGINIA